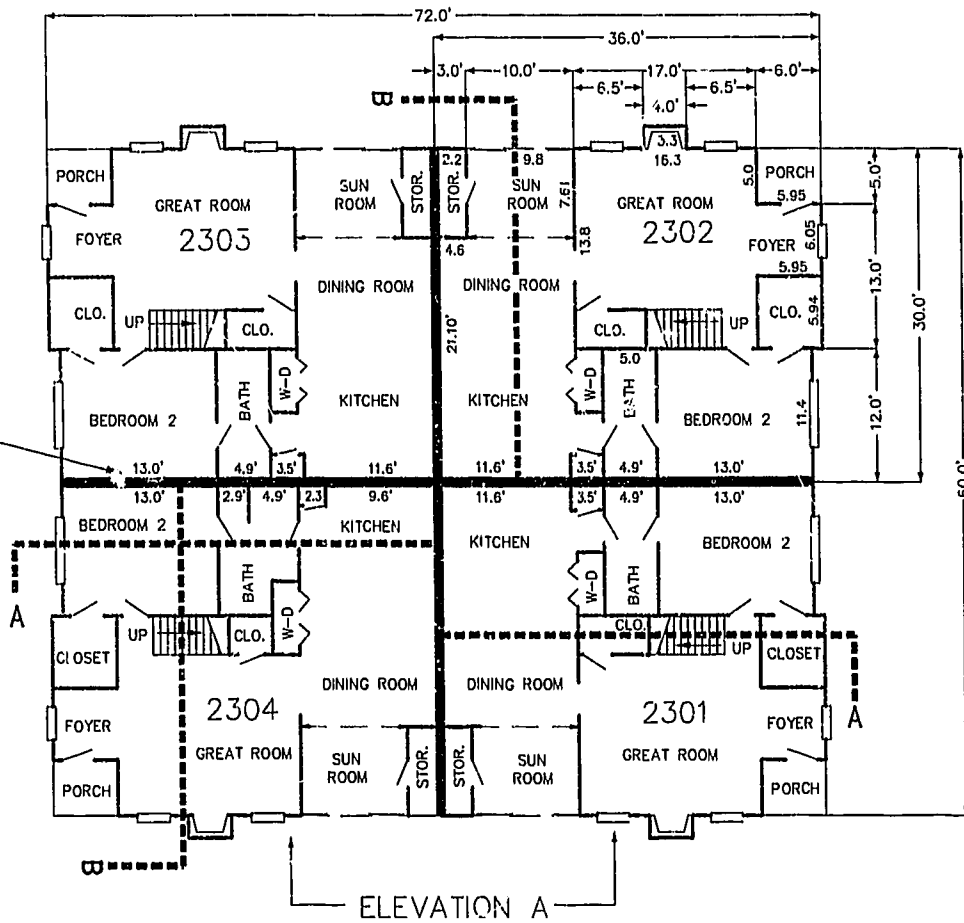
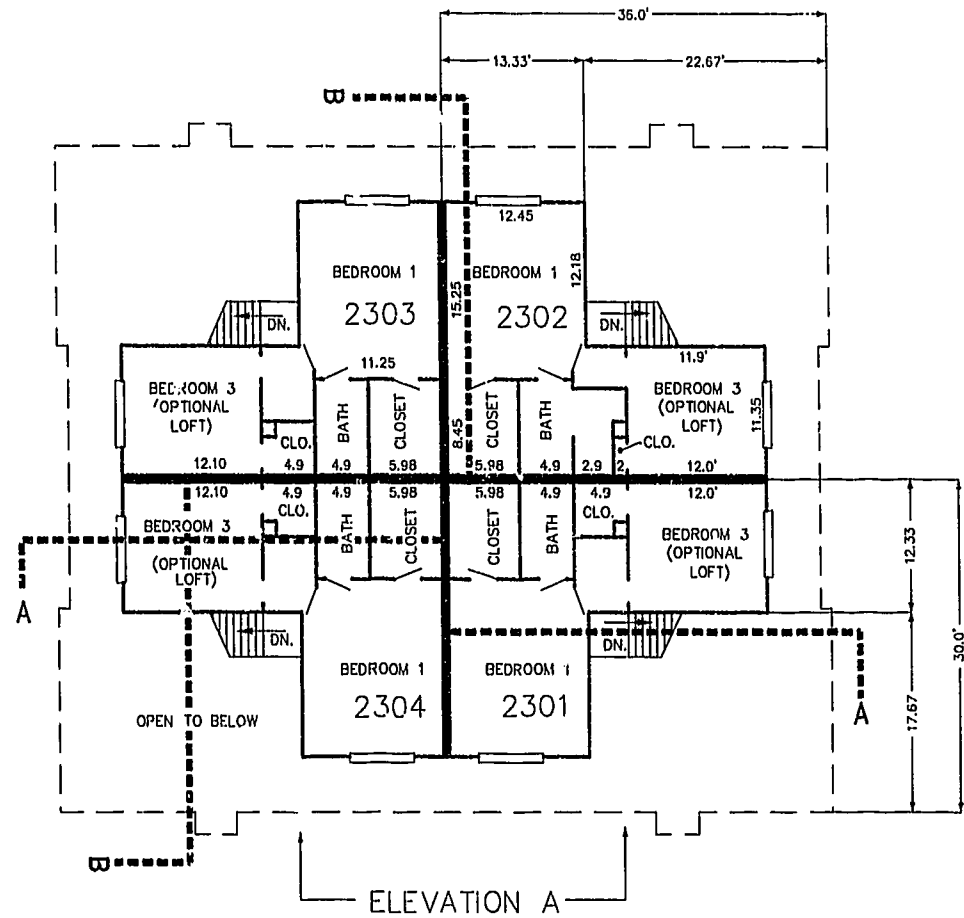


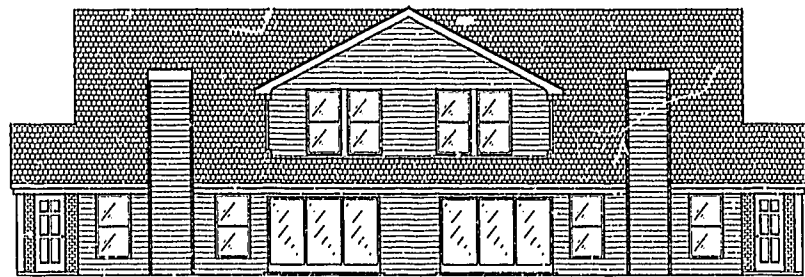
PARTY WALL
(FIRE WALL)
TYPICAL



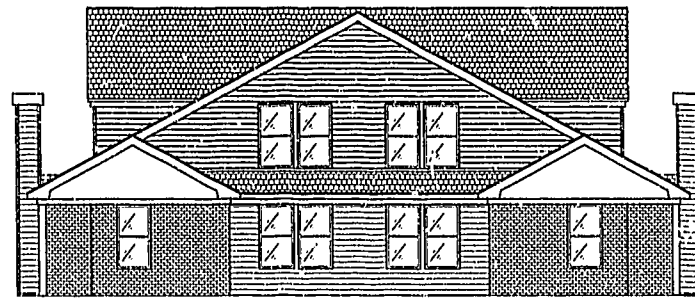
FIRST FLOOR PLAN
(UNIT #2302 IS TYPICAL)



SECOND FLOOR PLAN
(UNIT #2302 IS TYPICAL)



ELEVATION A

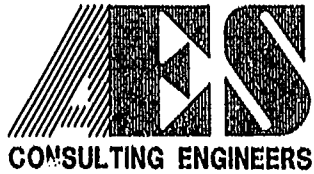


ELEVATION B

JFS 03.20.02-13:24 8395-35.dwg

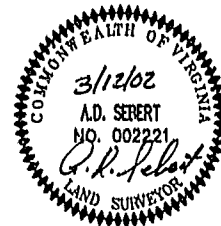
#020661

85 PAGE 69



5248 Olde Towne Road, Suite 1
Williamsburg, Virginia 23188
(757) 253-0040
Fax (757) 220-8994

PLAT OF CONDOMINIUM
WESTGATE AT WILLIAMSBURG,
A CONDOMINIUM
PHASE TWENTY-THREE
OWNED BY: 752 L.L.C.,
A VIRGINIA LIMITED LIABILITY COMPANY
CITY OF WILLIAMSBURG VIRGINIA



No.	DATE	REVISION / COMMENT / NOTE	BY

City of Williamsburg & County of James City
Circuit Court: This PLAT, was recorded on
11 April 2002
at *11:00 AM* P.B. *85*, P.G. *65-70*
DOCUMENT # *020661*
BETSY B. WOOLRIDGE, CLERK
Betsy B. Woolridge, Rep. Clerk

Designed GTW/ADS	Drawn JFS
Scale 1" = 10'	Date 3/12/02
Project No. 8395--6	
Drawing No. 5 OF 6	