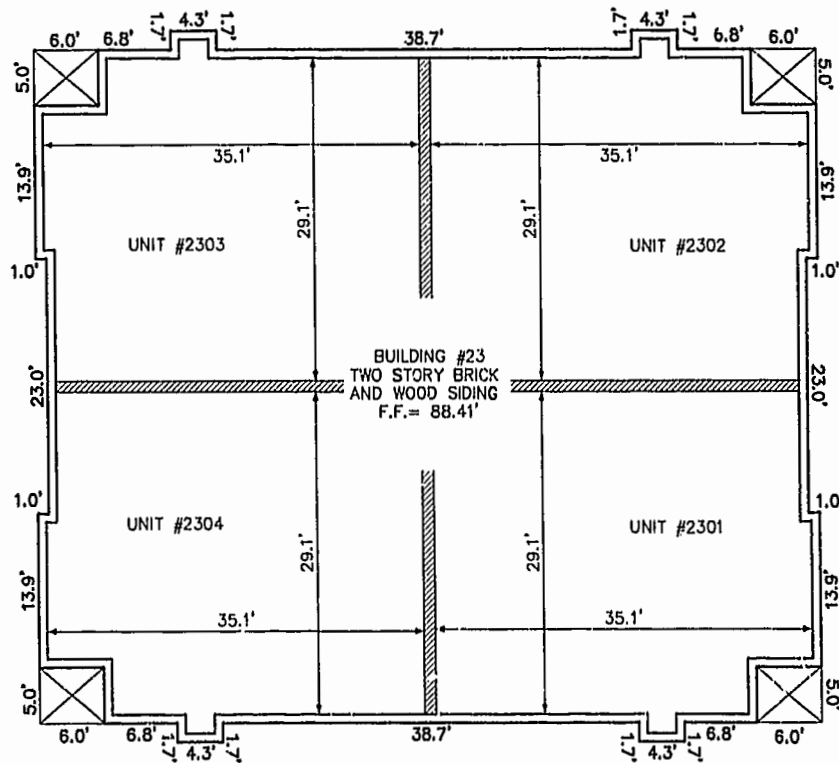
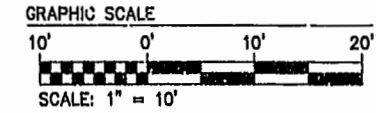
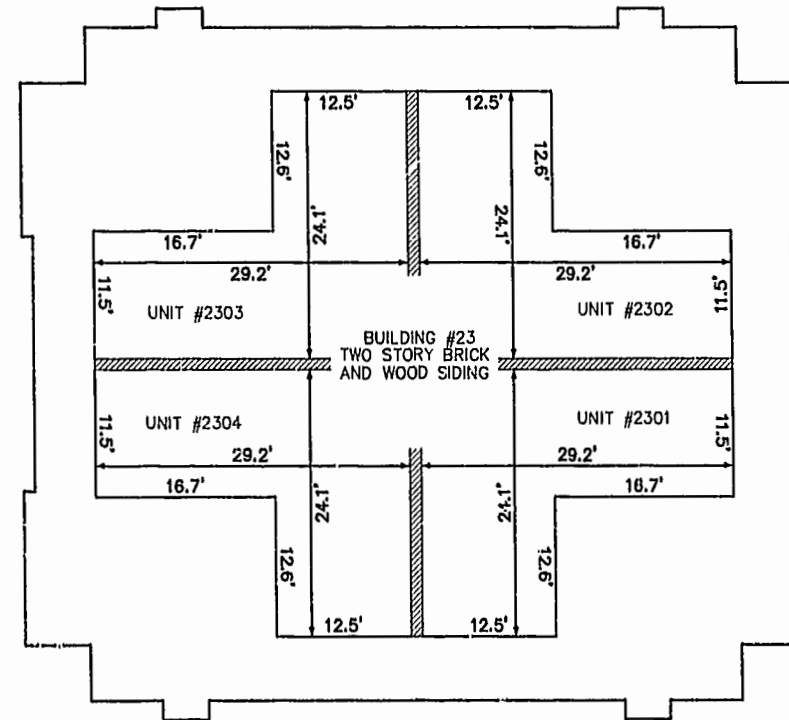


BUILDING NUMBER	UNIT NUMBER	STREET ADDRESS
23	2301	2301 WESTGATE CIRCLE
23	2302	2302 WESTGATE CIRCLE
23	2303	2303 WESTGATE CIRCLE
23	2304	2304 WESTGATE CIRCLE



FRONT OF BUILDING  
FIRST FLOOR

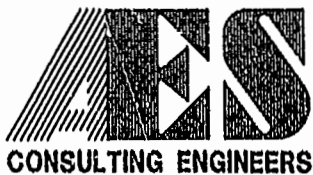


FRONT OF BUILDING  
SECOND FLOOR

03.20.02-13:23 JFS 8395p234.dwg

# 0206601

85 PAGE



5248 Olde Towne Road, Suite 1  
Williamsburg, Virginia 23188  
(757) 253-0040  
Fax (757) 220-8994

**PLAT OF CONDOMINIUM  
WESTGATE AT WILLIAMSBURG,  
A CONDOMINIUM  
PHASE TWENTY-THREE  
OWNED BY: 752 L.L.C.,  
A VIRGINIA LIMITED LIABILITY COMPANY  
CITY OF WILLIAMSBURG VIRGINIA**



No.	DATE	REVISION / COMMENT / NOTE	BY

City of Williamsburg & County of James City  
Circuit Court: This PLAT was recorded on  
Scale 11 April 2002  
at 11:00 AM/PM, PB 25 PG 65-70  
DOCUMENT # 020661  
BETSY B. WOOLRIDGE, CLERK  
*Betsy Woolridge*, Dep. Clerk

Designed GTW/ADS	Drawn JFS
Scale 1" = 10'	Date 3/12/02
Project No. 8395-6	
Drawing No. 4 OF 6	

68