

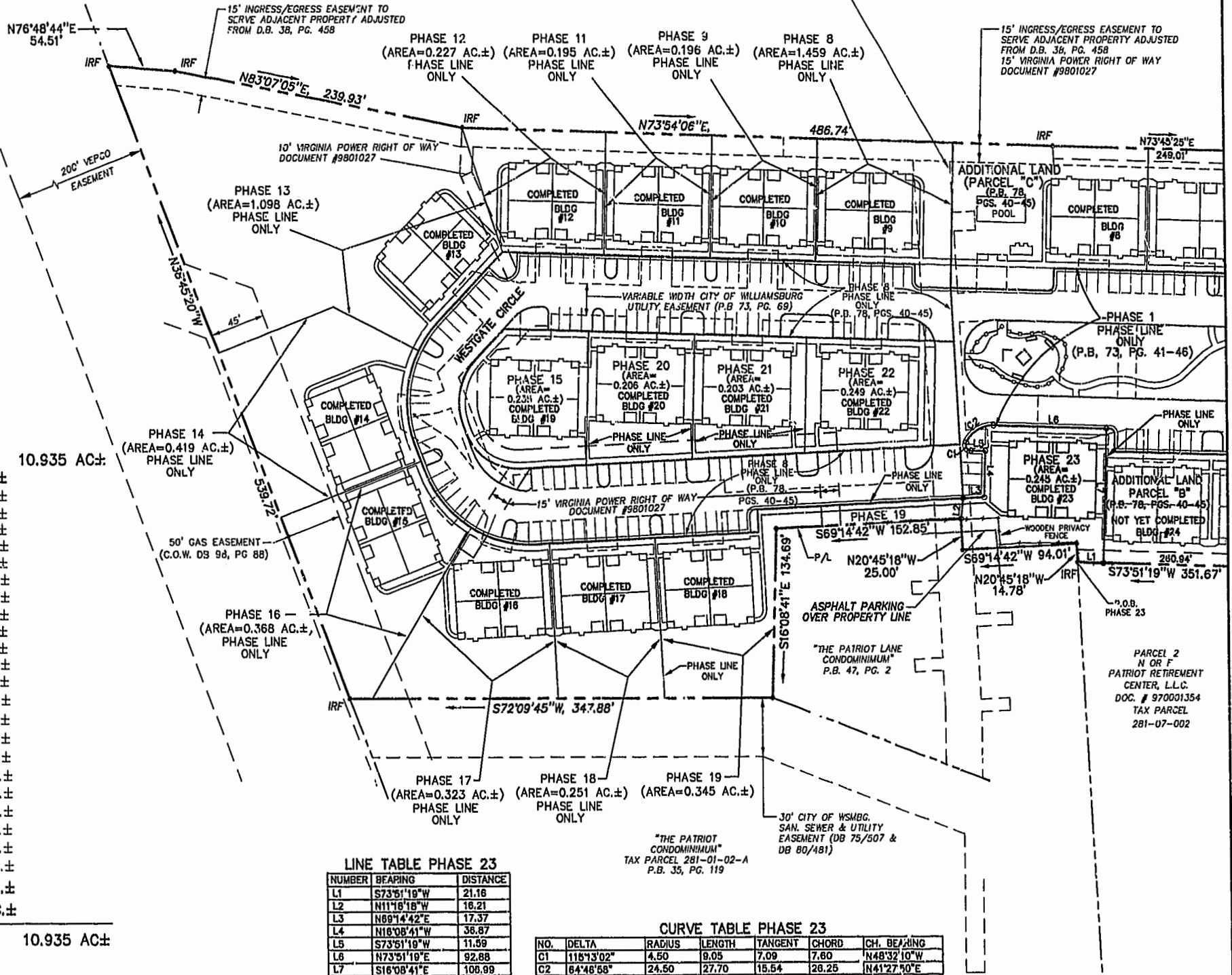
N OR F  
WAREURTON & MAHONE ESTATE  
TAX PARCEL 282-A-001

VARIABLE WIDTH CITY OF WILLIAMSBURG  
SAN, SEWER & UTILITY  
EASEMENT (DB 75/507 &  
DB 80/481)

15' INGRESS/EGRESS EASEMENT TO  
SERVE ADJACENT PROPERTY ADJUSTED  
FROM D.B. 38, PG. 458  
15' VIRGINIA POWER RIGHT OF WAY  
DOCUMENT #9801027

RECORD MERIDIAN  
PLAT BOOK 63, PAGE 11

N/F  
JAMESTOWN ACADEMY  
TAX PARCEL 281-03-A



**AREA**

- TOTAL AREA PARCEL 1= 10.935 AC±
- PHASE TWENTY-THREE= 0.245 AC±
- PHASE TWENTY-TWO= 0.249 AC±
- PHASE TWENTY-ONE= 0.203 AC±
- PHASE TWENTY= 0.206 AC±
- PHASE NINETEEN= 0.345 AC±
- PHASE EIGHTEEN= 0.251 AC±
- PHASE SEVENTEEN= 0.323 AC±
- PHASE SIXTEEN= 0.365 AC±
- PHASE FIFTEEN= 0.235 AC±
- PHASE FOURTEEN= 0.419 AC±
- PHASE THIRTEEN= 1.098 AC±
- PHASE TWELVE= 0.227 AC±
- PHASE ELEVEN= 0.195 AC±
- PHASE TEN= 0.222 AC±
- PHASE NINE= 0.196 AC±
- PHASE EIGHT= 1.459 AC±
- PHASE SEVEN= 0.216 AC±
- PHASE SIX= 0.343 AC±
- PHASE FIVE= 0.235 AC±
- PHASE FOUR= 0.200 AC±
- PHASE THREE= 0.196 AC±
- PHASE TWO= 0.195 AC±
- PHASE ONE= 2.377 AC±

ADDITIONAL AREA (PARCEL "B")= 0.536 AC±  
ADDITIONAL AREA (PARCEL "C")= 0.396 AC±

TOTAL= 10.935 AC±

**LINE TABLE PHASE 23**

NUMBER	BEARING	DISTANCE
L1	S73°51'19"W	21.16
L2	N11°18'18"W	16.21
L3	N69°14'42"E	17.37
L4	N18°08'41"W	36.87
L5	S73°51'19"W	11.59
L6	N73°51'19"E	92.88
L7	S18°08'41"E	108.99

**CURVE TABLE PHASE 23**

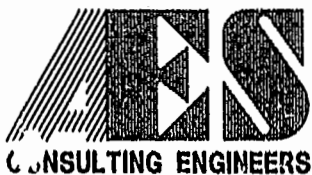
NO.	DELTA	RADIUS	LENGTH	TANGENT	CHORD	CH. BEARING
C1	118°13'02"	4.50	9.05	7.09	7.80	N48°32'10"W
C2	84°48'58"	24.50	27.70	15.54	26.25	N41°27'50"E

8395p233.dwg 0.3.20.02-13:21 JFS

SEE SHEET 2

#020661

85 PAGE 67



5248 Olde Towne Road, Suite 1  
Williamsburg, Virginia 23188  
(757) 253-0040  
Fax (757) 220-8994

PLAT OF CONDOMINIUM  
WESTGATE AT WILLIAMSBURG,  
A CONDOMINIUM  
PHASE TWENTY-THREE  
OWNED BY: 752 L.L.C.,  
A VIRGINIA LIMITED LIABILITY COMPANY  
CITY OF WILLIAMSBURG VIRGINIA



City of Williamsburg & County of James City Circuit Court: This PLAT was recorded on <i>11 April 2002</i>	
at 11:00 AM	AM/PB 95 PG 65-72
DOCUMENT #	020661
BETSY B. WOOLRIDGE, CLERK	<i>Betsy Woolridge</i> , Dep. Clerk
1 3/25/02	REVISED PER ATTORNEY COMMENTS JFS
No. DATE	REVISION / COMMENT / NOTE BY

Designed GTW/ADS	Drawn JFS
Scale 1" = 60'	Date 3/12/02
Project No. 8395-6	
Drawing No. 3 OF 6	