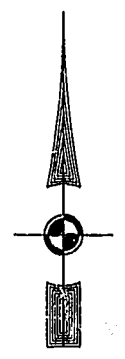
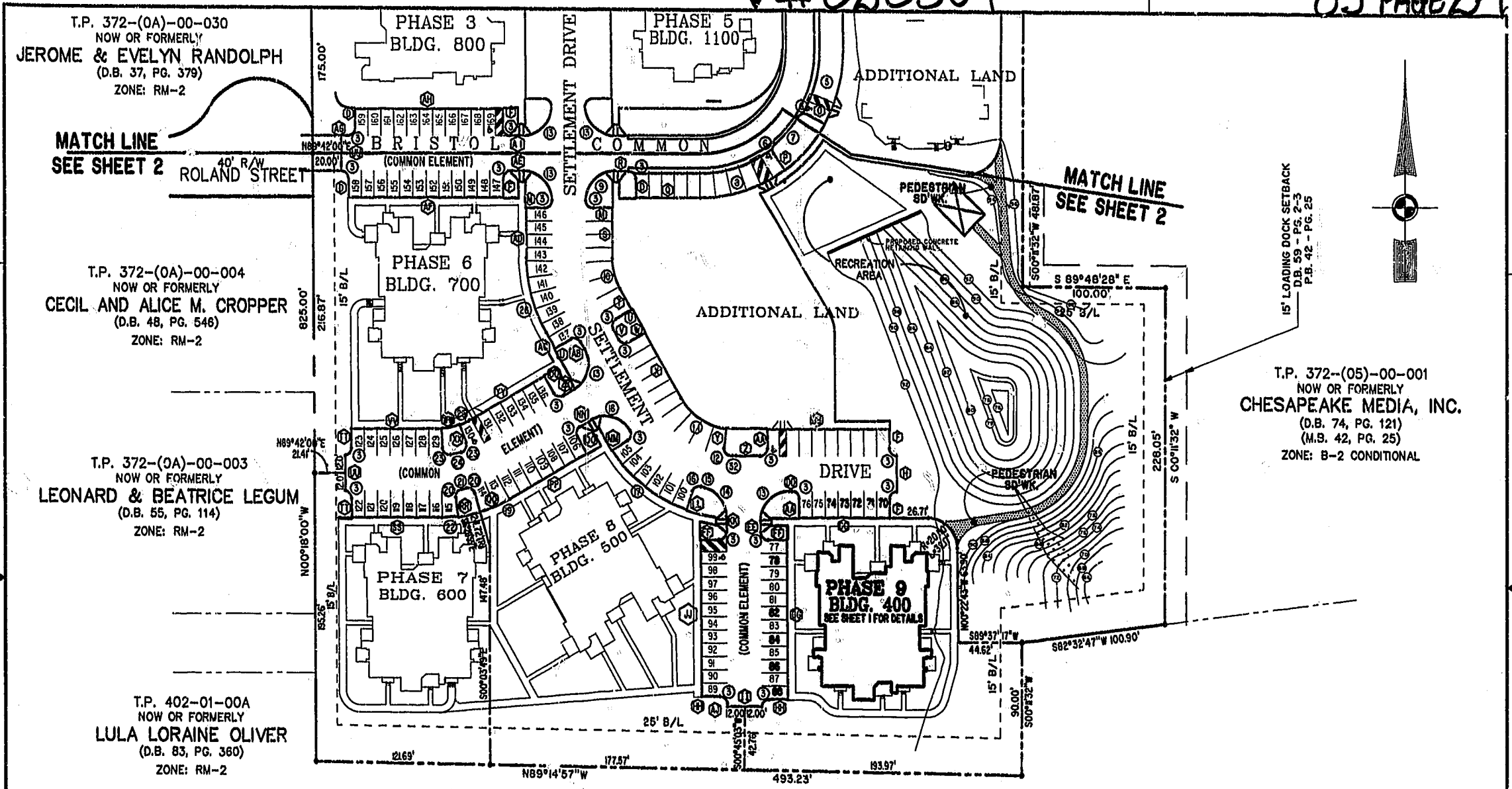


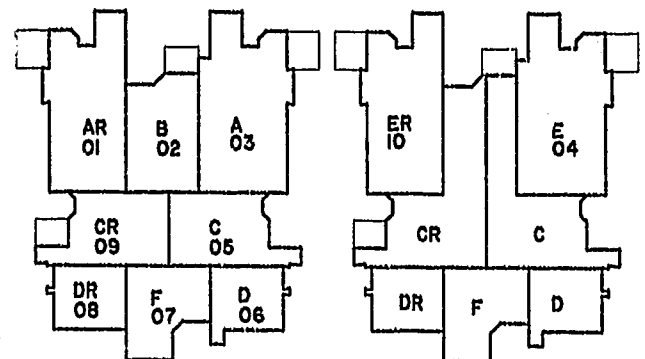
#020309

85 PAGE 27



(FIRST FLOOR)

(SECOND FLOOR)



TYPICAL CONDOMINIUM LAYOUT

T.P. 372-(04)-00-00-A2
 NOW OR FORMERLY
CITY OF WILLIAMSBURG
 (D.B. 121, PG. 321)
 (M.B. 36, PG. 77)

City of Williamsburg & County of James City
 Circuit Court: This PLAT was recorded on
 14 February 2003
 at 10:50 AM/PM. PB 25 PG 25-29
 DOCUMENT # 020309
 BETSY B. WOOLRIDGE, CLERK
Betsy Woolridge, Clerk



BRISTOL COMMONS
 A CONDOMINIUM COMMUNITY
 PHASE NINE
 FOR
KEY GROUP, LLC
 CITY OF WILLIAMSBURG, VIRGINIA

Hassell & Folkes, P.C. Engineers Surveyors Planners Chesapeake, VA 23320 (757) 547-9531	SIZE	CONTRACT NO	DISK/BOX	FILENAME	REV.
	C	98062	123K/15	BRISTOL9.DWG	
SCALE: 1" = 50'		DATE: 08/31/01		SHEET 3 of 4	