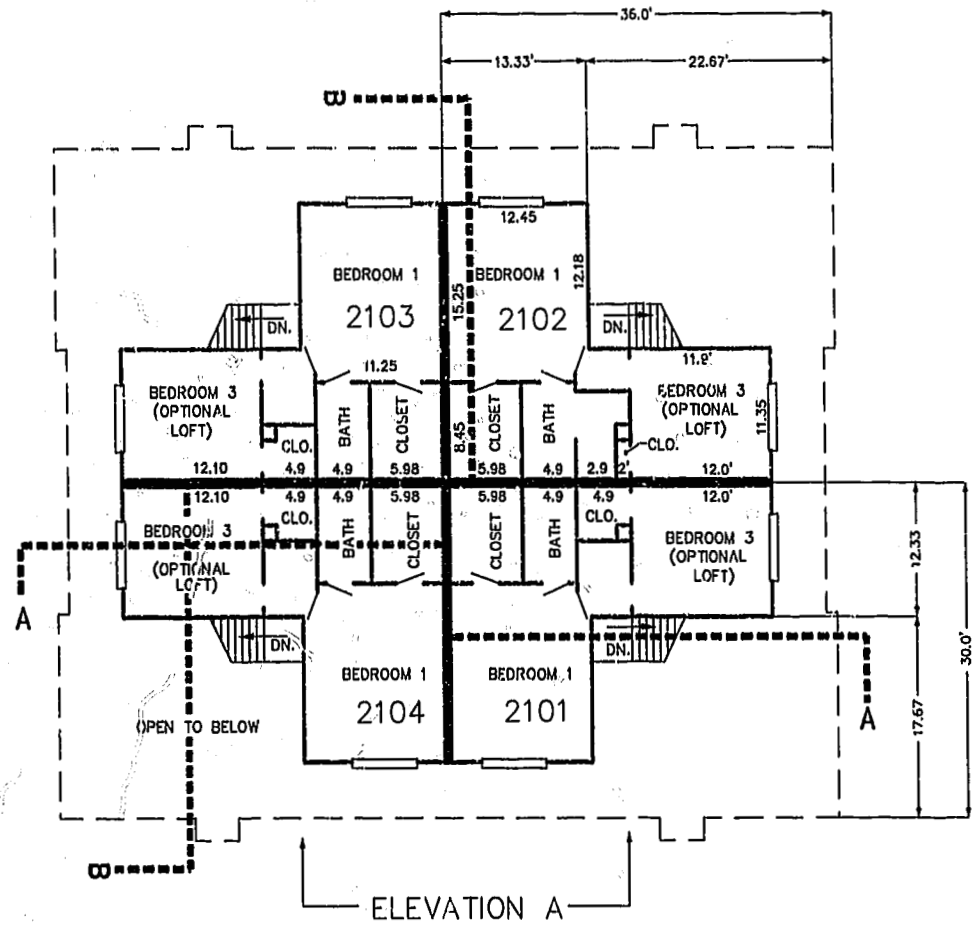


FIRST FLOOR PLAN
(UNIT #2102 IS TYPICAL)



SECOND FLOOR PLAN
(UNIT #2102 IS TYPICAL)



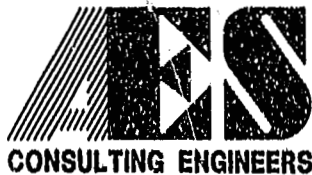
ELEVATION A



ELEVATION B

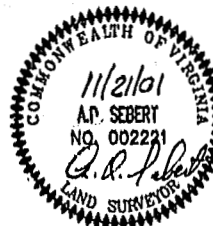
11.30.01-08:44 8395p215.dwg

JFS



5248 Olde Towne Road, Suite 1
Williamsburg, Virginia 23188
(757) 253-0040
Fax (757) 220-8994

PLAT OF CONDOMINIUM
WESTGATE AT WILLIAMSBURG,
A CONDOMINIUM
PHASE TWENTY-ONE
OWNED BY: 752 L.L.C.,
A VIRGINIA LIMITED LIABILITY COMPANY
CITY OF WILLIAMSBURG VIRGINIA



No.	DATE	REVISION / COMMENT / NOTE	BY

City of Williamsburg & County of James City
Circuit Court: This PLAT was recorded on
10 Jan 2002
at 2:28 PM, PG 21 PG 22-24
DOCUMENT # 002221
BETSY B. WOOLRIDGE, CLERK
Betsy B. Woolridge, Dep. Clerk

Designed GTW/ADS	Drawn JFS
Scale 1" = 10'	Date 11/21/01
Project No. 8395-6	
Drawing No. 5 OF 6	