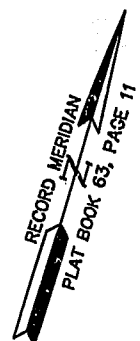
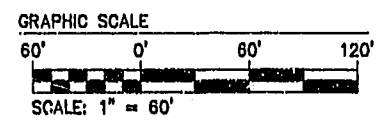


NOTE: AT THE TIME OF THIS SURVEY ROADS AND SIDEWALK ARE UNDER CONSTRUCTION. (PROPOSED LOCATION SHOWN). WATER & SANITARY SYSTEM ARE IN PLACE.

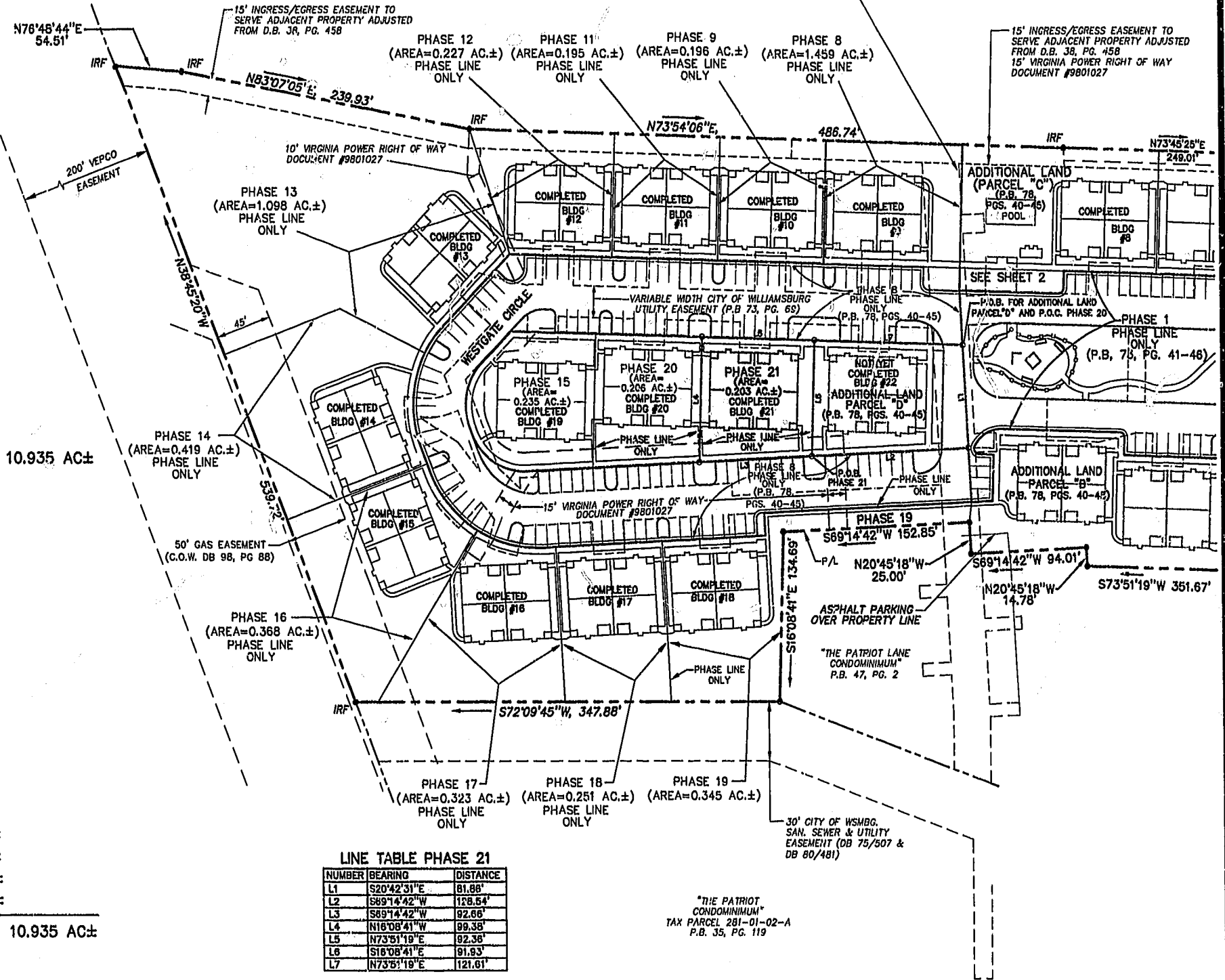


N/F JAMESTOWN ACADEMY TAX PARCEL 281-03-A

N OR F WARBURTON & MAHONE ESTATE TAX PARCEL 282-A-001

VARIABLE WIDTH CITY OF WILLIAMSBURG SAN. SEWER & UTILITY EASEMENT (DB 75/507 & DB 80/481)

15' INGRESS/EGRESS EASEMENT TO SERVE ADJACENT PROPERTY ADJUSTED FROM D.B. 38, PG. 458 15' VIRGINIA POWER RIGHT OF WAY DOCUMENT #9801027



AREA

TOTAL AREA PARCEL 1= 10.935 AC±

- PHASE TWENTY-ONE= 0.203 AC±
- PHASE TWENTY= 0.206 AC±
- PHASE NINETEEN= 0.345 AC±
- PHASE EIGHTEEN= 0.251 AC±
- PHASE SEVENTEEN= 0.323 AC±
- PHASE SIXTEEN= 0.368 AC±
- PHASE FIFTEEN= 0.235 AC±
- PHASE FOURTEEN= 0.419 AC±
- PHASE THIRTEEN= 1.098 AC±
- PHASE TWELVE= 0.227 AC±
- PHASE ELEVEN= 0.195 AC±
- PHASE TEN= 0.222 AC±
- PHASE NINE= 0.196 AC±
- PHASE EIGHT= 1.459 AC±
- PHASE SEVEN= 0.216 AC±
- PHASE SIX= 0.343 AC±
- PHASE FIVE= 0.235 AC±
- PHASE FOUR= 0.200 AC±
- PHASE THREE= 0.196 AC±
- PHASE TWO= 0.195 AC±
- PHASE ONE= 2.377 AC±

ADDITIONAL AREA (PARCEL "B")= 0.781 AC±

ADDITIONAL AREA (PARCEL "C")= 0.396 AC±

ADDITIONAL AREA (PARCEL "D")= 0.249 AC±

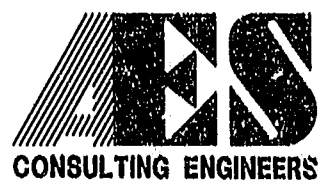
TOTAL= 10.935 AC±

LINE TABLE PHASE 21

| NUMBER | BEARING | DISTANCE |
|--------|-------------|----------|
| L1 | S20°42'31"E | 81.88' |
| L2 | S89°14'42"W | 128.54' |
| L3 | S89°14'42"W | 92.66' |
| L4 | N18°08'41"W | 99.38' |
| L5 | N73°51'19"E | 92.38' |
| L6 | S16°08'41"E | 91.93' |
| L7 | N73°51'19"E | 121.81' |

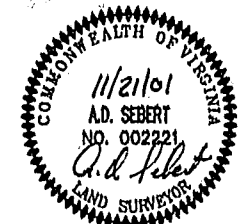
"THE PATRIOT LANE CONDOMINIUM" P.B. 47, PG. 2

11.08.01-15:19 8395213.DWG JFS



5248 Olde Towne Road, Suite 1
Williamsburg, Virginia 23188
(757) 253-0040
Fax (757) 220-8994

PLAT OF CONDOMINIUM
WESTGATE AT WILLIAMSBURG,
A CONDOMINIUM
PHASE TWENTY-ONE
OWNED BY: 752 L.L.C.,
A VIRGINIA LIMITED LIABILITY COMPANY
CITY OF WILLIAMSBURG VIRGINIA



| | | |
|---|-----------------------|-----------------------|
| City of Williamsburg & County of James City Circuit Court: This PLAT was recorded on 10 Jan 2002 at 2:28 PM/PH. PB 84 PG 71-74 DOCUMENT # 020062 BETSY B. WOOLKIDGE, CLERK Betsy B. Woolkidge, Dep. Clerk | Designed GTW/ADS | Drawn JFS |
| No. DATE | Scale 1" = 60' | Date 11/21/01 |
| REVISION / COMMENT / NOTE | Project No. 8395-6 | Drawing No. 3 OF 6 |