

City of Williamsburg & County of James City
 Circuit Court: This PLAT was recorded on
 12 Dec. 2002
 at 11:50 A.M. P.B. 88, PG. 27
 DOCUMENT # 020029798
 BETTY B. WOOLBRIDGE, CLERK
 [Signature] Dep. Clerk

46-1-01-0-0001
 "GREENSPRINGS PLANTATION"
 (DB 322, PG 254)

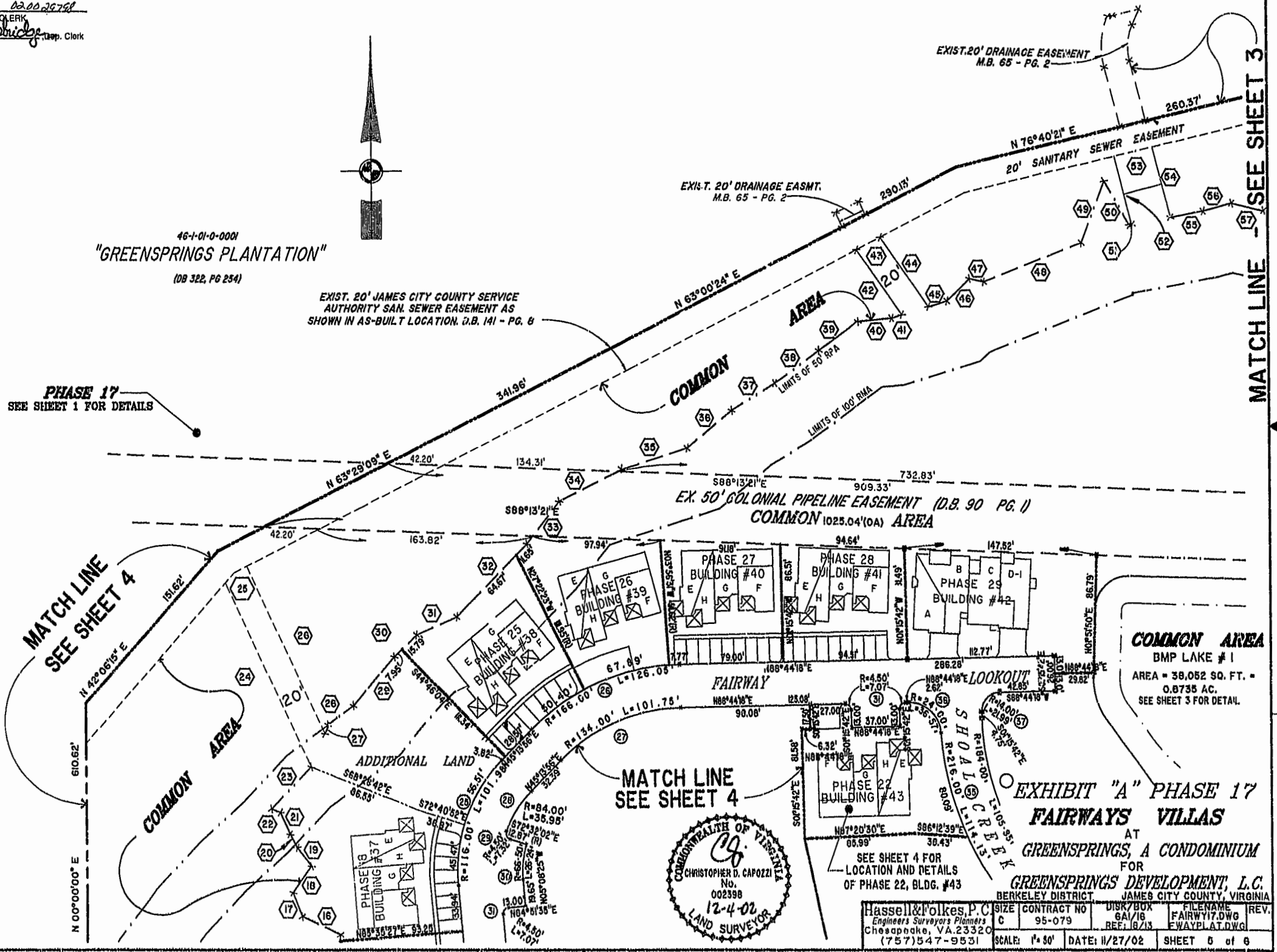
EXIST. 20' JAMES CITY COUNTY SERVICE
 AUTHORITY SAN. SEWER EASEMENT AS
 SHOWN IN AS-BUILT LOCATION. D.B. 141 - PG. 8

PHASE 17
 SEE SHEET 1 FOR DETAILS

MATCH LINE
 SEE SHEET 4

MATCH LINE
 SEE SHEET 4

MATCH LINE
 SEE SHEET 3



COMMON AREA
 BMP LAKE # 1
 AREA = 38,052 SQ. FT. =
 0.8735 AC.
 SEE SHEET 3 FOR DETAIL.

**EXHIBIT "A" PHASE 17
 FAIRWAYS VILLAS**
 AT
GREENSPRINGS, A CONDOMINIUM
 FOR
GREENSPRINGS DEVELOPMENT, L.C.
 BERKELEY DISTRICT, JAMES CITY COUNTY, VIRGINIA

SEE SHEET 4 FOR
 LOCATION AND DETAILS
 OF PHASE 22, BLDG. #43



| | | | |
|--|-----------------|----------------|--------------|
| Hassell & Folkes, P.C. Engineers Surveyors Planners Chesapeake, VA 23320 (757) 547-9531 | SCALE: 1" = 50' | DATE: 11/27/02 | SHEET 5 of 8 |
|--|-----------------|----------------|--------------|