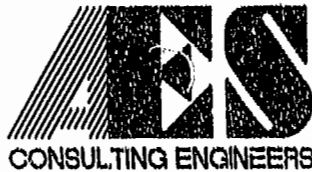
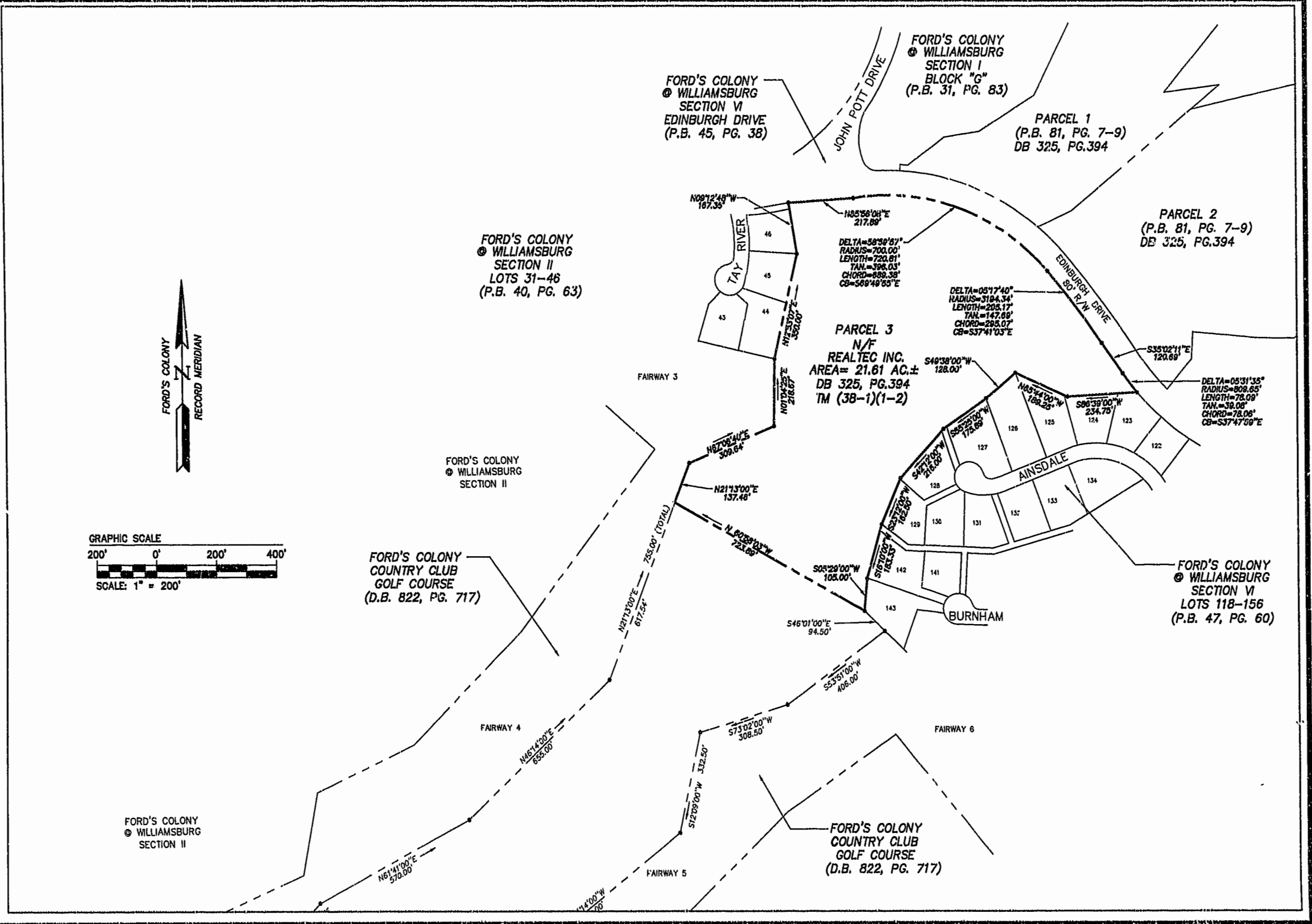
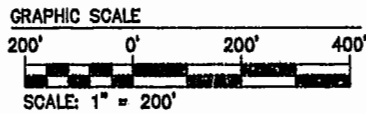
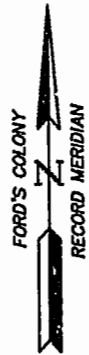


05.09.02-10:36 565296P02.dwg LBA



5248 Old Towne Road, Suite 1
Williamsburg, Virginia 23188
(757) 253-0040
Fax (757) 220-8994

**PLAT SHOWING A PROPOSED
CONSERVATION AREA ON A PARCEL
OF LAND BEING A PART OF
FORD'S COLONY • WILLIAMSBURG**
POWhatan DISTRICT JAMES CITY COUNTY VIRGINIA



City of Williamsburg & County of James City Circuit Court: This PLAT was recorded on <u>Nov. 20, 2002</u> at <u>1:23</u> (A.M./P.M.) PG. <u>88</u> PG. <u>10-11</u> DOCUMENT # <u>020028346</u> BETSY B. WOOLRIDGE, CLERK <i>Betsy Woolridge</i> Rep. Clerk			
No.	DATE	REVISION / COMMENT / NOTE	BY

Designed AES	Drawn LBA
Scale 1"=200'	Date 5/7/02
Project No. 5652-96	
Drawing No. 2 OF 2	