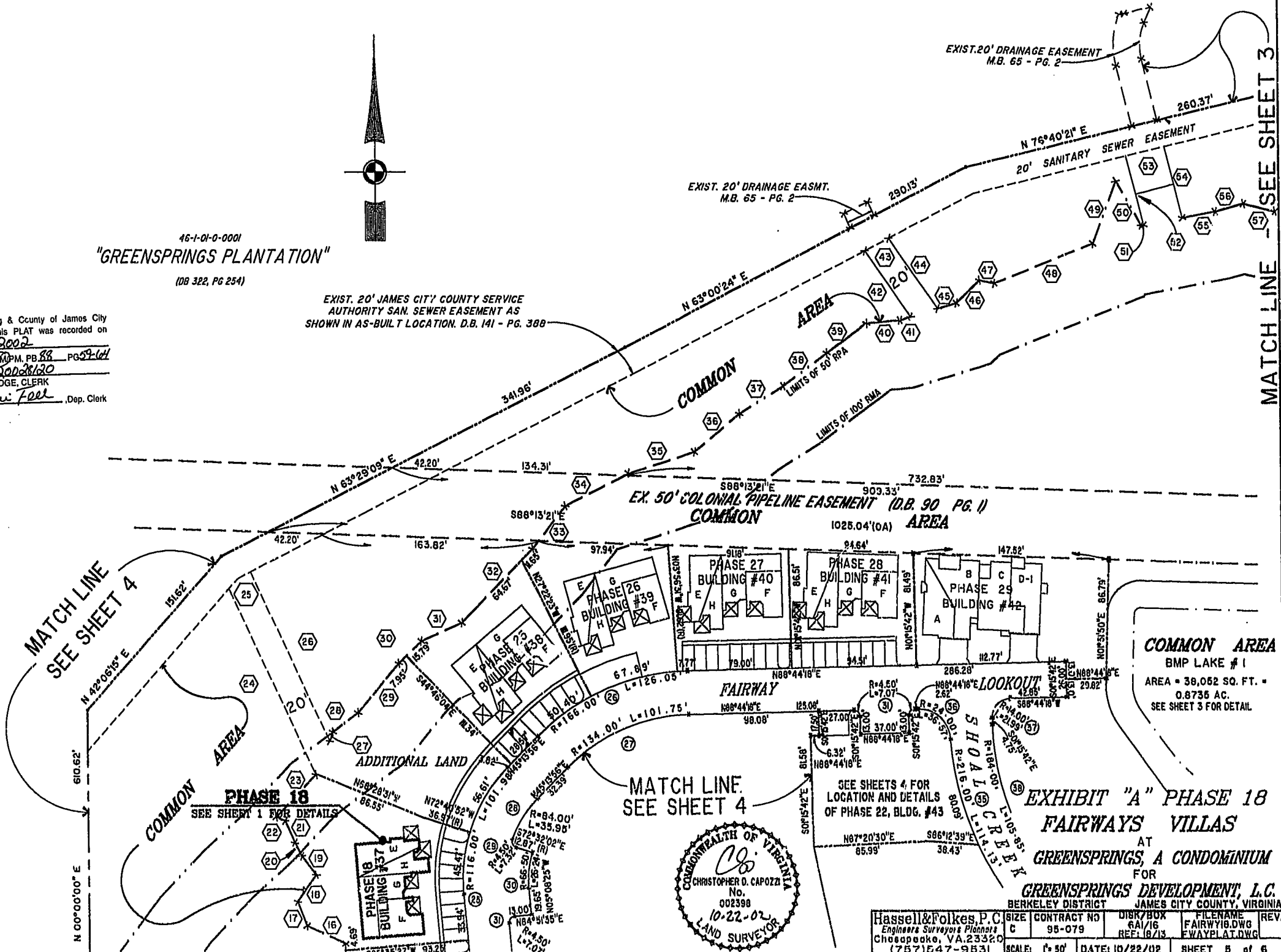


46-1-01-0-0001  
"GREENSPRINGS PLANTATION"  
(DB 322, PG 254)

EXIST. 20' JAMES CITY COUNTY SERVICE  
AUTHORITY SAN. SEWER EASEMENT AS  
SHOWN IN AS-BUILT LOCATION, D.B. 141 - PG. 388

City of Williamsburg & County of James City  
Circuit Court: This PLAT was recorded on  
Nov. 25, 2002  
at 10:32 AM P.M. PB. 88 PG. 59-64  
DOCUMENT # 020028120  
BETSY B. WOOLRIDGE, CLERK  
C. Newell Dep. Clerk



MATCH LINE  
SEE SHEET 4

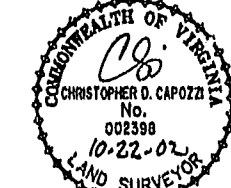
MATCH LINE  
SEE SHEET 3

MATCH LINE  
SEE SHEET 4

COMMON AREA  
BMP LAKE #1  
AREA = 38,062 SQ. FT. =  
0.8735 AC.  
SEE SHEET 3 FOR DETAIL

SEE SHEETS 4 FOR  
LOCATION AND DETAILS  
OF PHASE 22, BLDG. #43

EXHIBIT "A" PHASE 18  
FAIRWAYS VILLAS  
AT  
GREENSPRINGS, A CONDOMINIUM  
FOR  
GREENSPRINGS DEVELOPMENT, L.C.  
BERKELEY DISTRICT JAMES CITY COUNTY, VIRGINIA



Hassell & Polkes, P.C. Engineers Surveyors Planners Chesapeake, VA 23320 (757) 547-9531	SCALE: 1" = 50'	DATE: 10/22/02	SHEET 8 of 6
--	-----------------	----------------	--------------