

#020028120

88 PAGE 61

City of Williamsburg & County of James City
 Circuit Court: This PLAT was recorded on
 Nov. 25, 2002
 at 10:32 AM PM, PB 88 PG 59-64
 DOCUMENT # 020028120
 BETSY B. WOOLRIDGE, CLERK
 C. New Fall, Dep. Clerk

46-1-01-0-0001
 "GREENSPRINGS PLANTATION"
 (DB 322, PG 254)



EXIST. 20' JAMES CITY COUNTY SERVICE
 AUTHORITY SAN. SEWER EASEMENT AS
 SHOWN IN AS-BUILT LOCATION. D.B. 141 - PG. 388

EXIST. 20' DRAINAGE EASEMENT
 M.B. 65 - PG. 2

MATCH LINE - SEE SHEET 5
 N 76°02'42" E

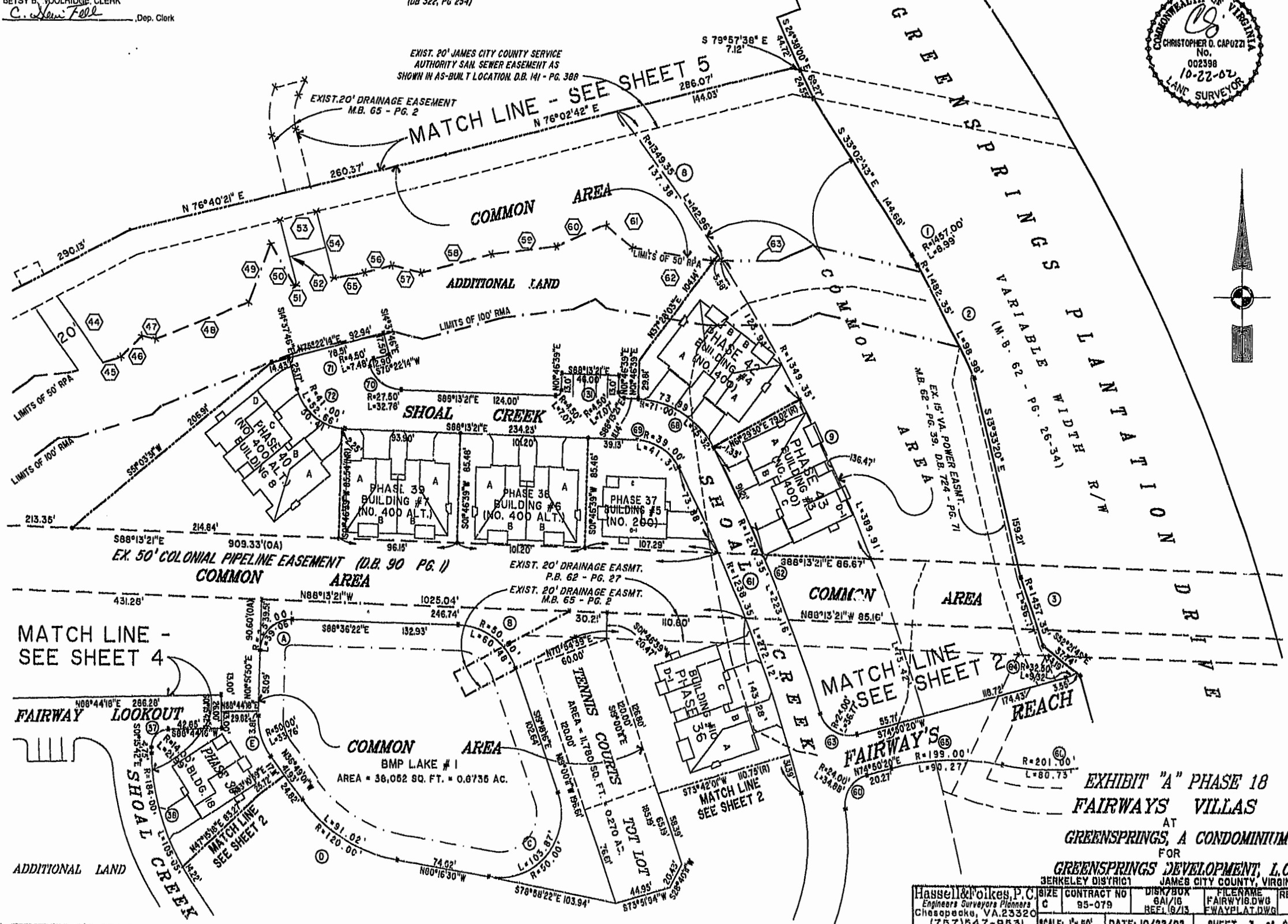


EXHIBIT "A" PHASE 18
 FAIRWAYS VILLAS
 AT
 GREENSPRINGS, A CONDOMINIUM
 FOR
 GREENSPRINGS DEVELOPMENT, L.C.
 3ENKLEY DISTRICT 1 JAMES CITY COUNTY, VIRGINIA

Hassell & Folkes, P.C. Engineers Surveyors Planners Chesapeake, VA 23320 (757) 547-9531	SIZE C	CONTRACT NO 95-079	DISK/BOX 8A/16	FILENAME FAIRWAYS.DWG	REV. 10/22/02
SCALE: 1" = 80'	DATE: 10/22/02	SHEET 3 of 6			