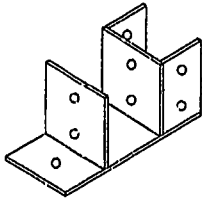
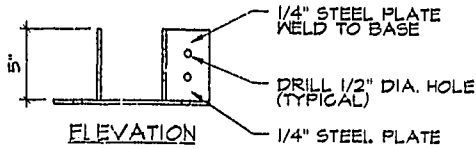


020025833

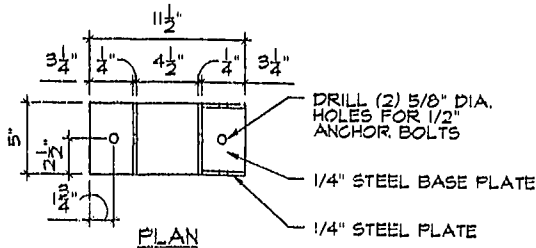
88 PAGE 27



ISOMETRIC



ELEVATION



PLAN

1 POST CAP
 2 1-1/2" x 1'-0"

City of Williamsburg & County of James City
 Circuit Court: This PLAT was recorded on

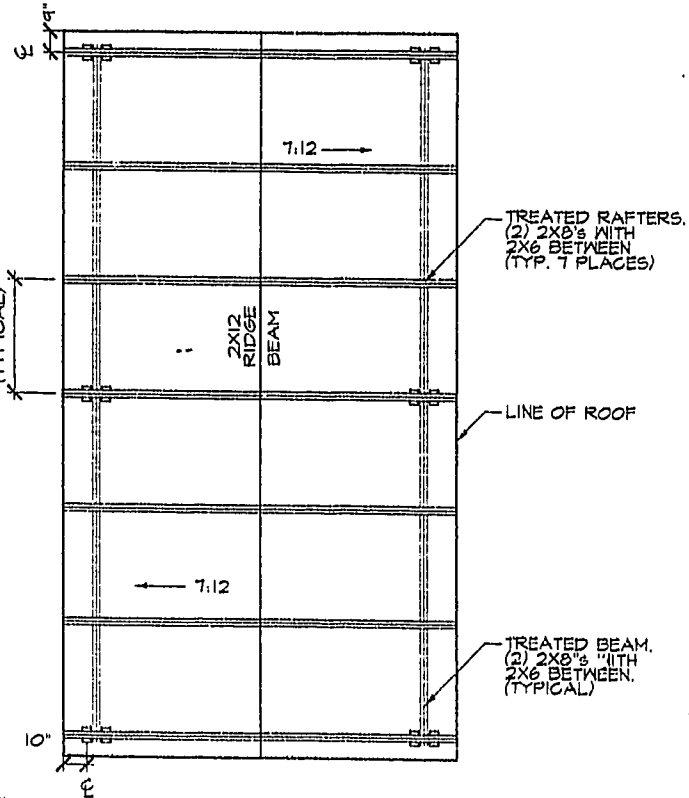
4 Nov. 2002

at 8:49 AM/AM, PB 88 PG 26 of 25

DOCUMENT # 020025833

BETSY B. WOOLRIDGE, CLERK

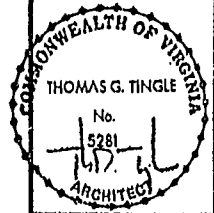
Betsy B. Woolridge Dep. Clerk



2 FRAMING PLAN
 2 1/4" = 1'-0"

Guemsey
 Tingle
 Architects
 WILLIAMSBURG, VIRGINIA
 57 ZD0203

Mill Pond Park Gazebo
 Stonehouse
 James City County, Virginia



Date	10-18-01
Drawn	WJH
Checked	TGT
Project	2010BB

2
 of FOUR Sheets