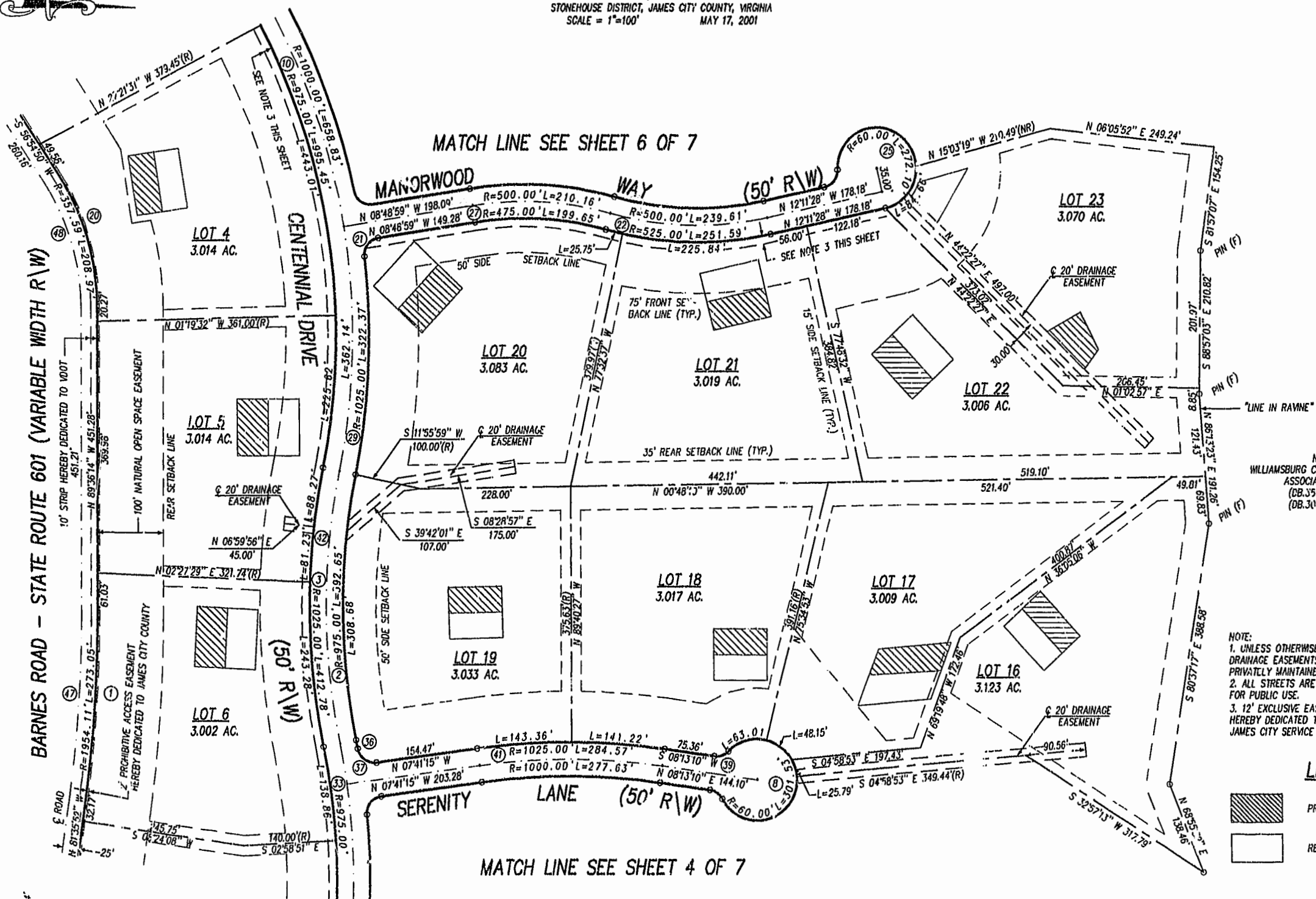


SUBDIVISION PLAT OF THE RETREAT PHASE ONE, SECTION THREE STONEHOUSE DISTRICT, JAMES CITY COUNTY, VIRGINIA SCALE = 1"=100' MAY 17, 2001



N/T WILLIAMSBURG CHRISTIAN RETREAT ASSOCIATION, INC. (DB.351, PG.704) (DB.304, PG.701)

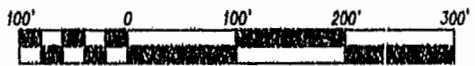
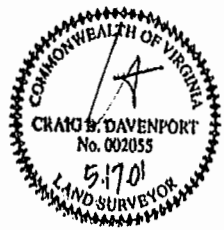
NOTE: 1. UNLESS OTHERWISE NOTED ALL DRAINAGE EASEMENTS ARE TO BE PRIVATELY MAINTAINED. 2. ALL STREETS ARE DEDICATED FOR PUBLIC USE. 3. 12' EXCLUSIVE EASEMENT HEREBY DEDICATED TO THE JAMES CITY SERVICE AUTHORITY.

LEGEND PRIMARY DRAIN FIELD RESERVE DRAIN FIELD

SHEET 5 OF 7

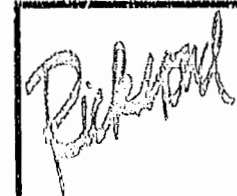
N 81°35'32" W 520.84'

City of Williamsburg & County of James City Circuit Court: This PLAT was recorded on 15 Oct 2002 at 11:02 AM/PM, PG. 88-14 DOCUMENT # 020023583 BETSY B. WOOLRIDGE, CLERK



SCALE 1"= 100'

SEE SHEET 1 OF 7 FOR NOTES AND CERTIFICATIONS SEE SHEET 3 OF 7 FOR CURVE DATA



Rickmond Engineering, Inc.

ENGINEERING SURVEYING LAND PLANNING 1643 MERRIMAC TRAIL WILLIAMSBURG, VA. VO. (757) 229-1776 FAX: (757) 229-4683

Vint Hill • P.O. Box 861647 WARRENTON, VA. VOICE: (541) 349-7730 FAX: (540) 349-7731

www.rickmond.com

Table with 5 columns: CHECKED BY: CBD, DRAWN BY: CBD, SCALE: 1"=100', DATE: 5/17/01, JOB NO: 0117