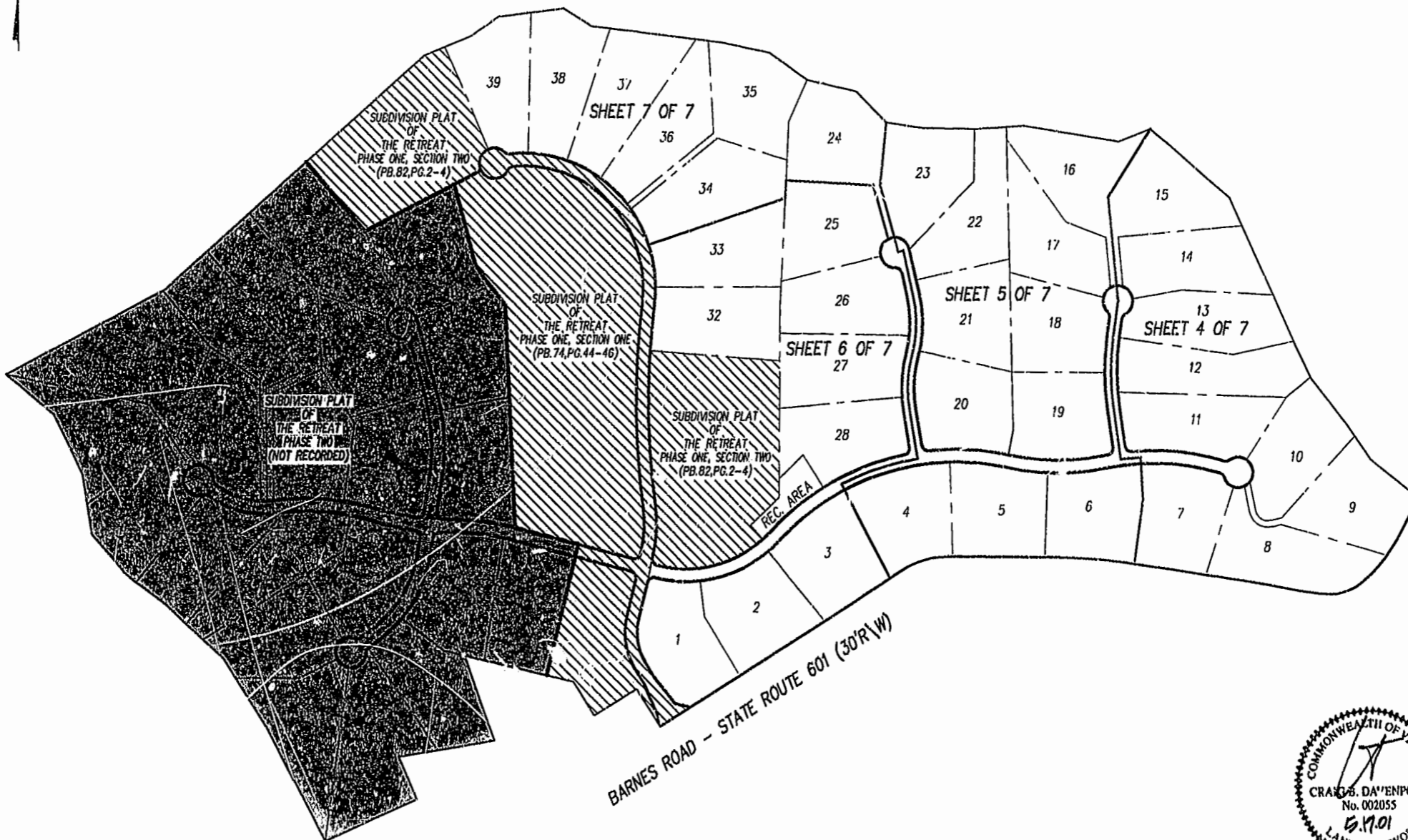


SUBDIVISION PLAT
OF
THE RETREAT
PHASE ONE, SECTION THREE
STONEHOUSE DISTRICT, JAMES CITY COUNTY, VIRGINIA
SCALE = N.T.C. MAY 17, 2001



SUBDIVISION PLAT
OF
THE RETREAT
PHASE TWO
(NOT RECORDED)

SUBDIVISION PLAT
OF
THE RETREAT
PHASE ONE, SECTION TWO
(PB.82,PG.2-4)

SUBDIVISION PLAT
OF
THE RETREAT
PHASE ONE, SECTION ONE
(PB.74,PG.44-46)

SUBDIVISION PLAT
OF
THE RETREAT
PHASE ONE, SECTION TWO
(PB.82,PG.2-4)

BARNES ROAD - STATE ROUTE 601 (30'R) (W)



SHEET 2 OF 7

City of Williamsburg & County of James City
Circuit Court: This PLAT was recorded on
15 OCT 2002
at 11:02 AM, PB. 88 PG. 2-14
DOCUMENT # 020023583
BETSY B. WOOLRIDGE, CLERK
Claudia M. Kelly, Dep. Clerk

SEE SHEET 1 OF 7 FOR NOTES AND CERTIFICATIONS

Rickmond **Rickmond Engineering, Inc.**
ENGINEERING SURVEYING LAND PLANNING
1643 MERRIMAC TRAIL
WILLIAMSBURG, VA. Vin Hill • P.O. Box 861647
VOICE: (757) 229-1776 WARRENTON, VA.
FAX: (757) 229-4683 FAX: (540) 349-7730
www.rickmond.com

CHECKED BY: CBD	DRAWN BY: CBD	SCALE: NTS	DATE: 5/17/01	JOB NO. 01117
--------------------	------------------	---------------	------------------	------------------