

#020023508

88 PAGE 4

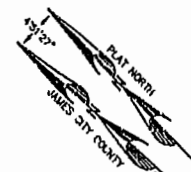
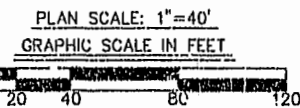
SUBDIVISION OF
The Villages at Powhatan
Phase 3
formerly known as
Powhatan Village Phase 3
Powhatan District
James City County, Virginia
Scale: 1"=40' Date: 5/16/02

SHEET 2 OF 2

LANDMARK
DESIGN GROUP

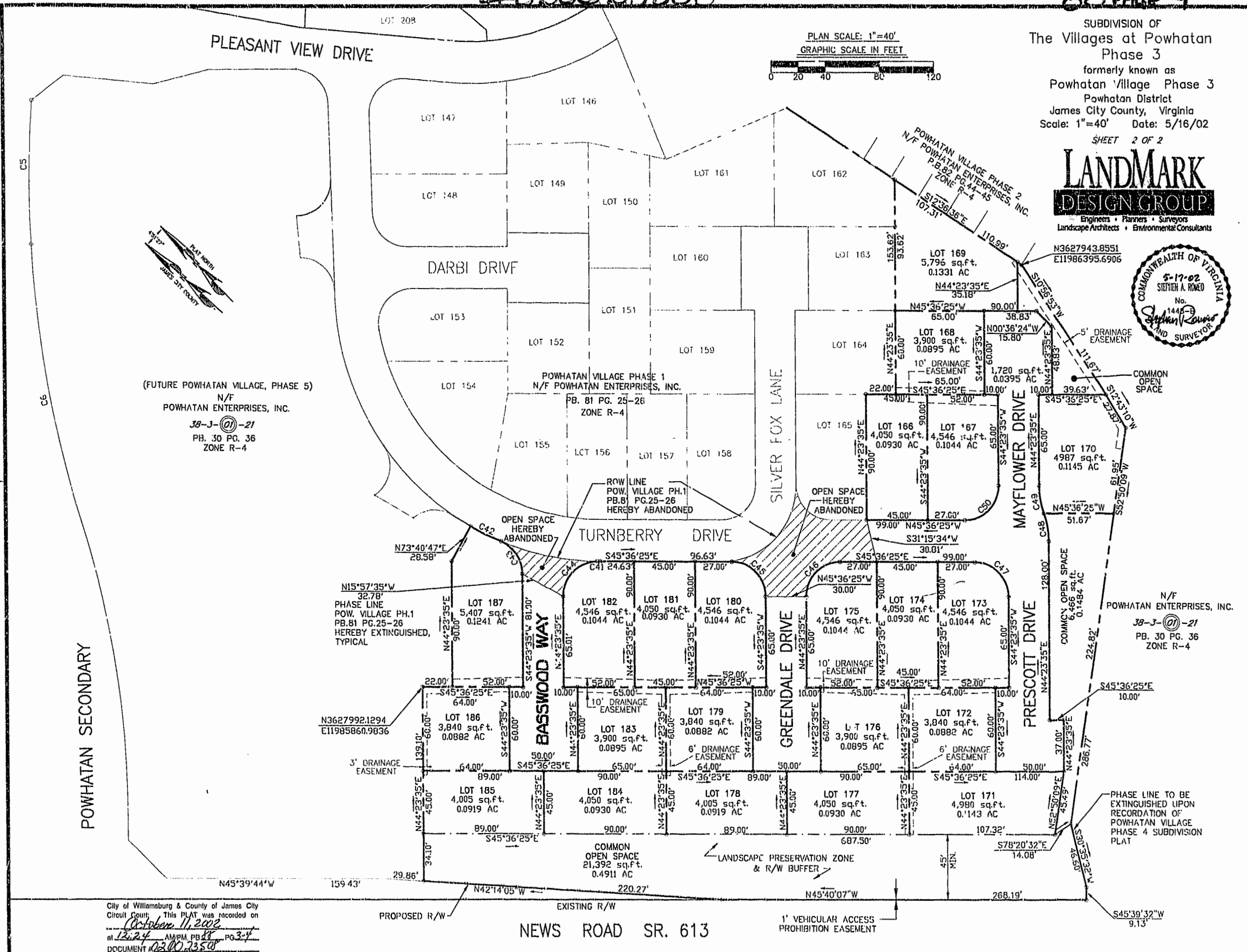
Engineers • Planners • Surveyors
Landscape Architects • Environmental Consultants

N3627943.8551
E11986395.6906



(FUTURE POWHATAN VILLAGE, PHASE 5)
N/F
POWHATAN ENTERPRISES, INC.
38-3-(01)-21
PB. 30 PG. 36
ZONE R-4

N/F
POWHATAN ENTERPRISES, INC.
38-3-(01)-21
PB. 30 PG. 36
ZONE R-4



City of Williamsburg & County of James City
Circuit Court: This PLAT was recorded on
October 11, 2002
at 12:24 AM PM, PB. 30 PG. 36
DOCUMENT # 020023508
BETSY B. WOOLRIDGE, CLERK
Betsy Woolridge Dep. Clerk

NEWS ROAD SR. 613

DRAWN BY: LFV
CHKD. BY: SAR
PROJ. NO.: 178041-151.11
DWG. NO.: 130801W