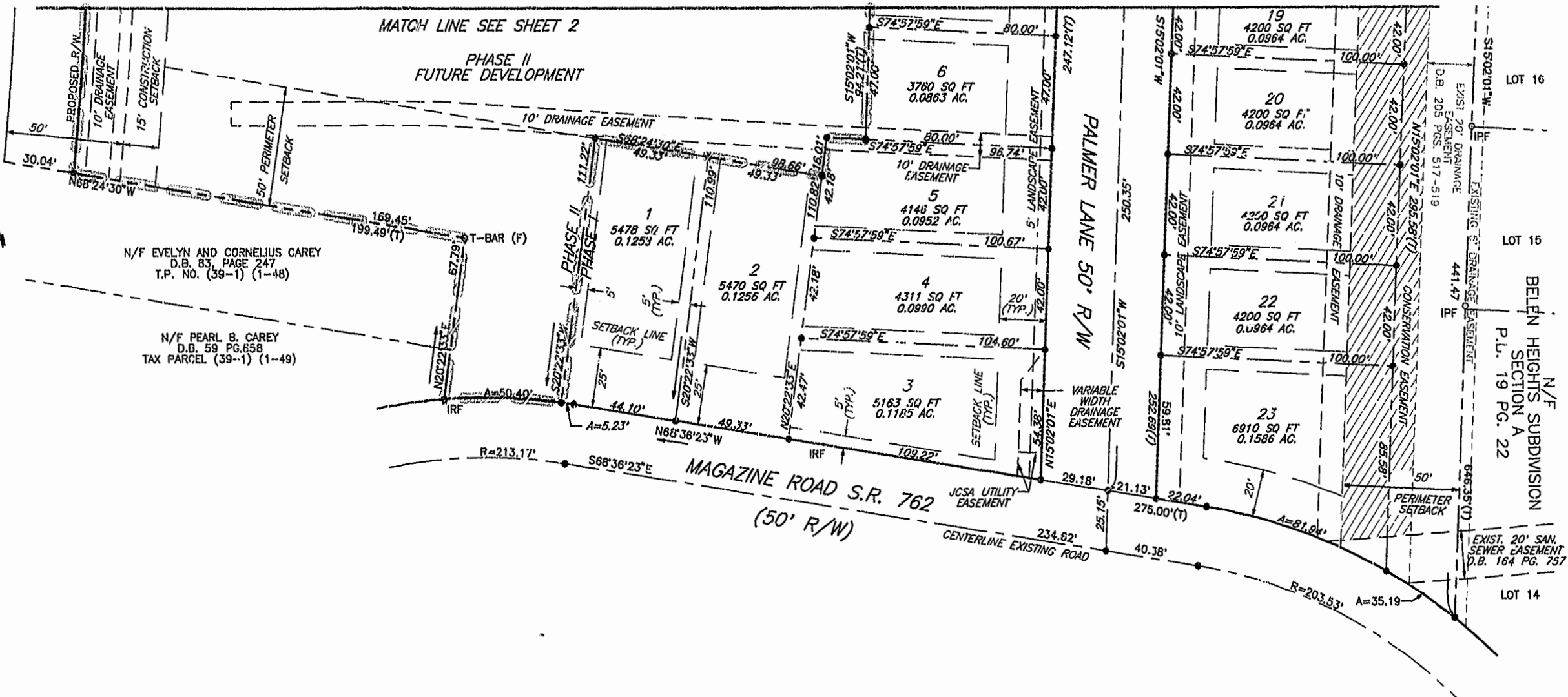


87 PAGE 101  
#020073322



**LEGEND**

PHASE I & II BOUNDARY

TIE LINE

SETBACK LINE

EASEMENT

PROPERTY LINE

RIGHT-OF-WAY LINE

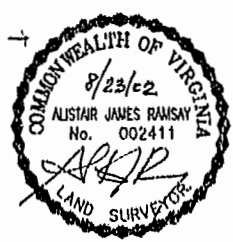
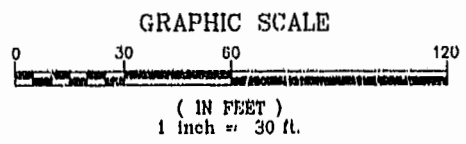
IRON ROD SET

IRON ROD FOUND

CONSERVATION EASEMENT

LINE	RADIUS	ARC	CHORD BEARING	CHORD	DELTA	TANGENT
C1	175.00'	283.07'	N31°18'19"W	253.20'	92°40'40"	183.38'
C2	125.00'	202.19'	S31°18'19"E	180.86'	92°40'41"	130.98'
C3	1477.39'	120.48'	N04°47'36"E	120.44'	4°40'20"	60.27'
C4	1497.39'	100.79'	N05°16'16"E	100.77'	3°51'24"	50.41'
C5	228.53'	117.14'	N53°55'21"W	115.86'	29°22'06"	59.89'
C6	238.17'	55.63'	N75°17'51"W	55.50'	13°22'56"	27.94'
C7	1477.39'	249.65'	N13°54'54"E	249.36'	9°40'55"	125.12'
C8	1447.39'	410.16'	N10°34'44"E	408.79'	16°14'11"	206.46'
C9	154.00'	249.10'	S31°18'19"E	222.82'	92°40'40"	161.37'

City of Williamsburg & County of James City  
 Circuit Court: This PLAT was recorded on  
9 Oct. 2002  
 at 2:31 AM PM, PB. 82 PG 95-101  
 DOCUMENT # 020073322  
 BETSY B. WOOLRIDGE, CLERK  
*Betsy B. Woolridge*, Dep. Clerk



**SUBDIVISION PLAT  
 IRONBOUND VILLAGE  
 PHASE I**

JAMES CITY COUNTY, BENKELEY DISTRICT  
 COMMONWEALTH OF VIRGINIA  
 SCALE: 1" = 30' DATE: 2/28/02  
 SHEET 3 OF 3

**LANDMARK**  
**DISCINGROUP**  
 Engineers • Planners • Surveyors  
 Landscape Architects • Environmental Consultants

4029 Ironbound Road  
 Suite 100  
 Williamsburg, VA 23188  
 Tel. (757) 253-2975  
 Fax (757) 229-0049  
 Email: lmdg@landmarkdgb.com

5544 Greenwich Road  
 Suite 200  
 Virginia Beach, VA 23462  
 Tel. (757) 473-2000  
 Fax (757) 497-7933  
 Email: lmdg@landmarkdgb.com