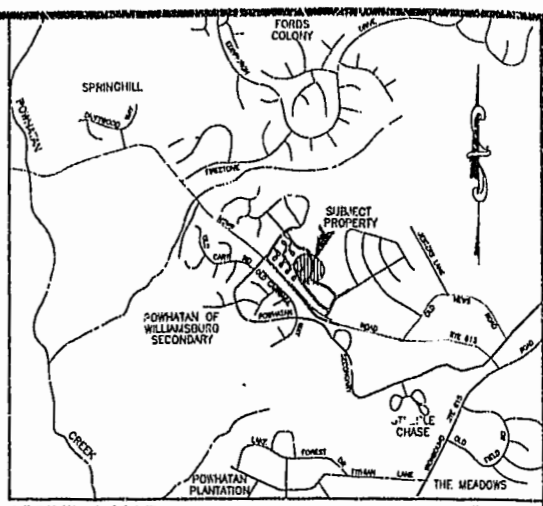
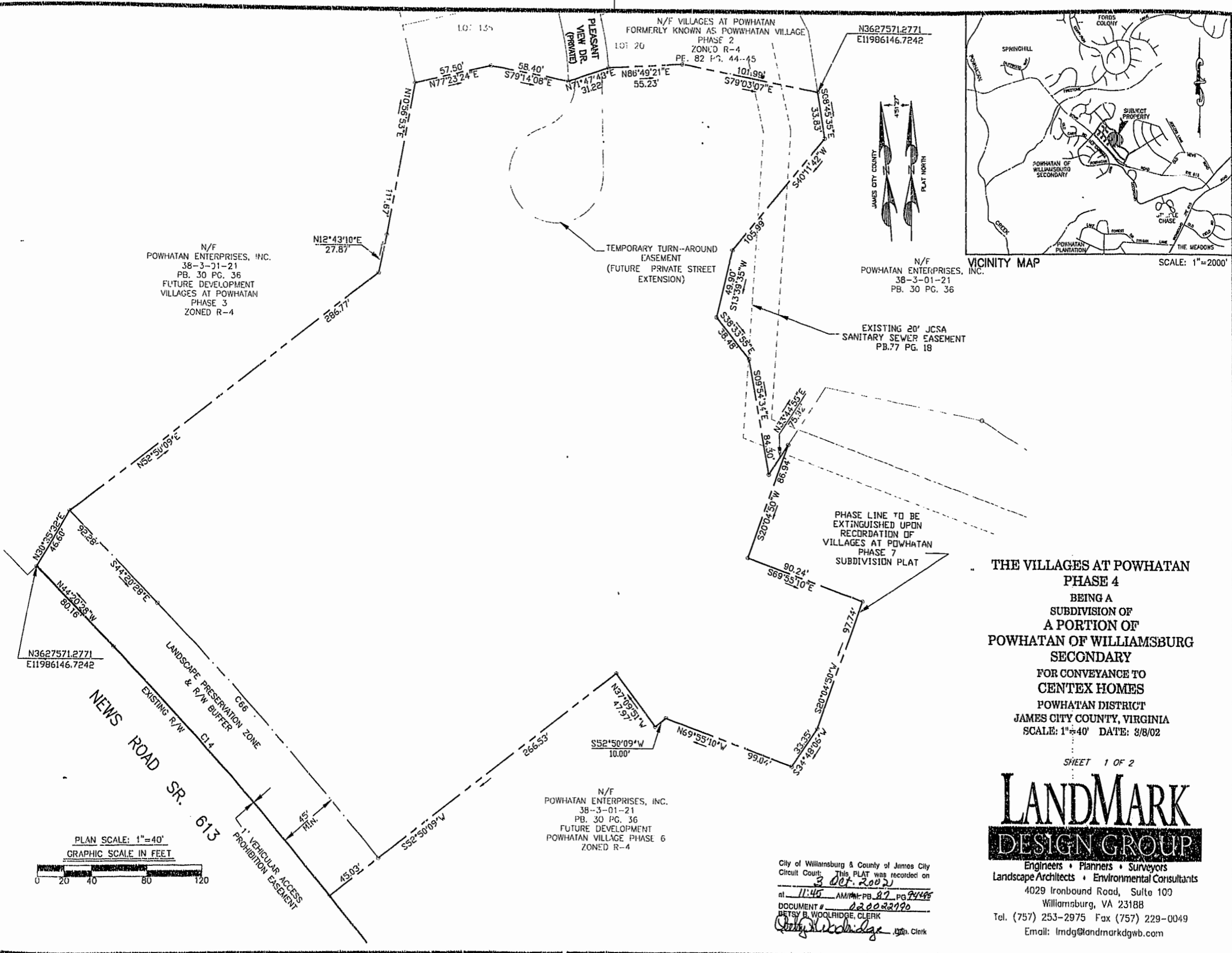


070022790 87 PAGE 94



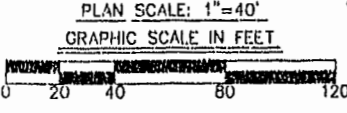
**THE VILLAGES AT POWHATAN
 PHASE 4**
 BEING A
 SUBDIVISION OF
 A PORTION OF
 POWHATAN OF WILLIAMSBURG
 SECONDARY
 FOR CONVEYANCE TO
 CENTEX HOMES
 POWHATAN DISTRICT
 JAMES CITY COUNTY, VIRGINIA
 SCALE: 1"=40' DATE: 8/8/02

SHEET 1 OF 2

**LANDMARK
 DESIGN GROUP**
 Engineers • Planners • Surveyors
 Landscape Architects • Environmental Consultants

4029 Ironbound Road, Suite 109
 Williamsburg, VA 23188
 Tel. (757) 253-2975 Fax (757) 229-0049
 Email: lmdg@landmarkdgb.com

City of Williamsburg & County of James City
 Circuit Court: This PLAT was recorded on
 3 Oct. 2002
 at 11:45 AM/PM: PB. 87, PG. 74-75
 DOCUMENT # 020022790
 BETSY B. WOOLRIDGE, CLERK
 Betsy Woolridge, Jm. Clerk



DRAWN BY: LFV
 CHKD. BY: SAR
 PROJ. NO.: 1780041-151.12
 DWG. NO.: 13109W