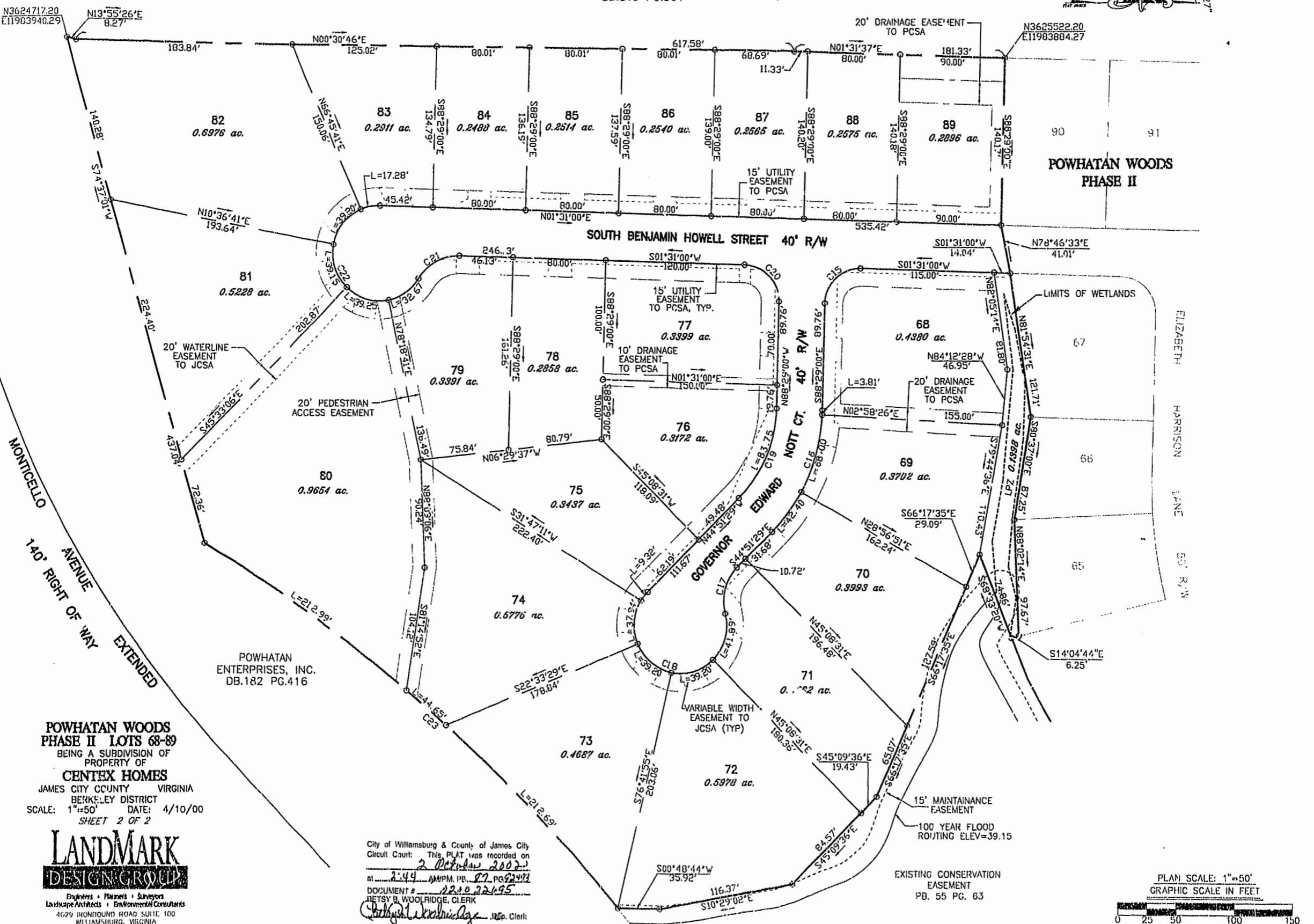


N/F
POWHATAN CROSSING, INC.
ZONED PUD-R
DB.819 PG.564

LEGEND:
-o- IRON MARKER SET
-■- MONUMENT FOUND
-●- IRON MARKER FOUND



POWHATAN WOODS
PHASE II

SOUTH BENJAMIN HOWELL STREET 40' R/W

GOVERNOR EDWARD
NOTT CT. 40' R/W

MONTICELLO
AVENUE
140' RIGHT OF WAY
EXTENDED

POWHATAN WOODS
PHASE II LOTS 68-89
BEING A SUBDIVISION OF
PROPERTY OF

CENTEX HOMES
JAMES CITY COUNTY VIRGINIA
BERKELEY DISTRICT
SCALE: 1"=50' DATE: 4/10/00
SHEET 2 OF 2

LANDMARK
DESIGN GROUP

Engineers • Planners • Surveyors
Landscape Architects • Environmental Consultants
4029 IRONBOUND ROAD SUITE 100
WILLIAMSBURG, VIRGINIA
(757) 253-2973 FAX: (757) 229-0079

City of Williamsburg & County of James City
Circuit Court: This PLAT was recorded on
2 October 2002
at 2:44 AM PM, PB. 27 PG. 22492
DOCUMENT # 2210 22695
BETSY B. WOOLRIDGE, CLERK
Betsy Woolridge, Rec. Clerk

EXISTING CONSERVATION
EASEMENT
PB. 55 PG. 63

PLAN SCALE: 1"=50'
GRAPHIC SCALE IN FEET

