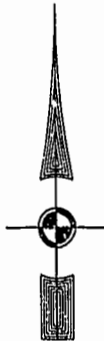


EXIST. 20' JAMES CITY COUNTY SERVICE AUTHORITY SAN. SEWER EASEMENT AS SHOWN IN AS-BUILT LOCATION. D.B. 141 - PG. 388



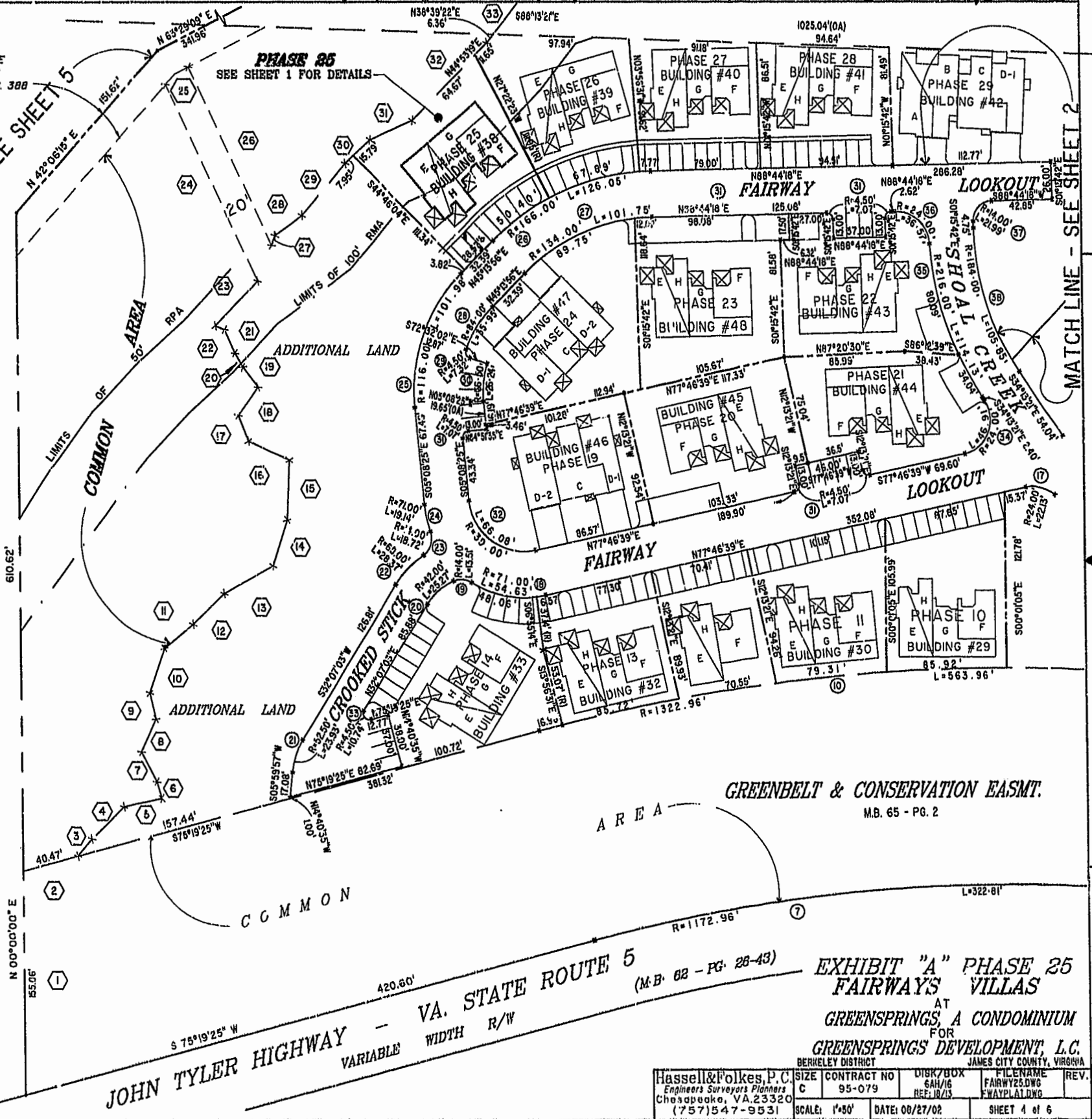
MATCH LINE - SEE SHEET 5

MATCH LINE - SEE SHEET 2

PHASE 25 SEE SHEET 1 FOR DETAILS

46-1-01-0-0001 "GREENSPRINGS PLANTATION" (DB 322, PG 204)

City of Williamsburg & County of James City Circuit Court: This PLAT was recorded on September 16, 2002 at 1:47 AM PM, P87 PGL146 DOCUMENT # 020021197 BETSY B. WOODRIDGE, CLERK C. Kevin Felt Dep. Clerk



GREENBELT & CONSERVATION EASMT. MB. 65 - PG. 2

JOHN TYLER HIGHWAY - VA. STATE ROUTE 5 (M.B. 62 - PG. 26-43) VARIABLE WIDTH R/W

Hassell & Folkes, P.C. Engineers Surveyors Planners Chesapeake, VA. 23320 (757) 547-9531	SIZE C	CONTRACT NO 95-079	DISK/BOX 6A/16 REF: 10/13	FILE NAME FARMY25.DWG FWAYPLAT.DWG	REV.
SCALE: 1"=50'	DATE: 00/27/02	SHEET 4 of 6			