

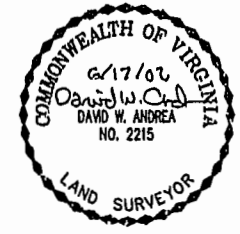
#020019595

87 PAGE 45

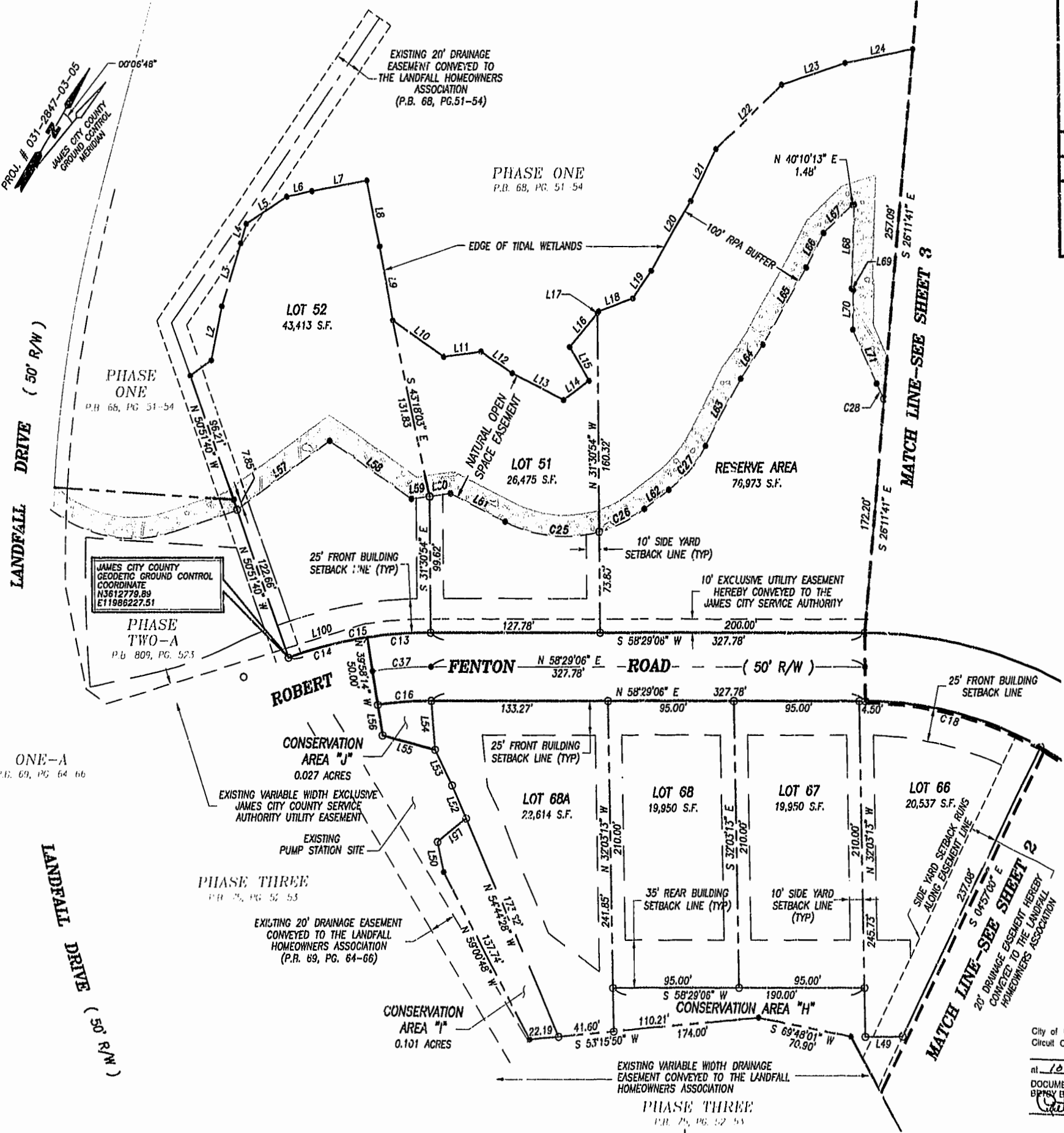
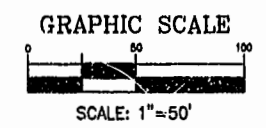
PLAT OF SUBDIVISION  
**LANDFALL**  
 AT  
**JAMESTOWN**  
 PHASE FIVE  
 JAMESTOWN DISTRICT  
 JAMES CITY COUNTY, VIRGINIA

DATE: 12/07/01 SHEET 4 OF 6 SCALE: 1"=50'  
 PROJECT NO: 30803.00 DRAWN BY: DWP

**VHB** Vanasse Hangen Brustlin, Inc.  
 Transportation Land Development Environmental Services  
 1132 Rock Landing Drive, Suite 203  
 Newport News, Virginia 23606  
 (757) 873-3366 • FAX (757) 873-0757



- LEGEND**
- DENOTES IRON PIN TO BE SET
  - DENOTES ANGLE POINT
  - EXTERIOR PROPERTY LINE
  - ▭ LIMITS OF NATURAL OPEN SPACE EASEMENT



City of Williamsburg & County of James City  
 Circuit Court: This PLAT was recorded on  
 26 Aug 2002  
 at 10:22 AM/PM, PB 27, PG 42-47  
 DOCUMENT # 020019595  
 BIPSY B. WOOLWIDGE, CLERK  
 Betsy B. Woolwidge, Rep. Clerk

LANDFALL PH5, 95-010  
 PLAT BOOK 87, PAGE 45.