

#020018257

87 PAGE 24

NOTE: ALL BUILDING DIMENSIONS AND DETAILS SHOWN ARE PER PLANS BY BOB RIPLEY CONSTRUCTION, INC. AND PER SITE PLAN BY SIMMONS ENGINEERING INC.

NOTE: COMMON ELEMENTS ARE NOT YET COMPLETED.

LOT 8 N/F JAMES C. & CAROLE C. SMITH TAX PARCEL # (39-1) (1-12) ZONED M-1

CERTIFICATION OF SOURCE OF TITLE

THIS IS TO CERTIFY THAT THE LAND EMBRACED WITHIN THIS CONDOMINIUM AS SHOWN ON THIS PLAT IS IN THE NAME OF ROBERT F. AND CATHERINE J. RIPLEY AND WAS ACQUIRED FROM ROBERT T. CASEY, ET ALS BY DEED DATED DECEMBER 10, 1988, AND DULY RECORDED IN THE CLERK'S OFFICE OF THE CIRCUIT COURT OF THE CITY OF WILLIAMSBURG AND THE COUNTY OF JAMES CITY, VIR. JA IN D.B. 331, PG.442.

CE-- COMMON ELEMENTS

COMMON ELEMENTS INCLUDE ALL PORTIONS OF THE CONDOMINIUM OTHER THAN THE UNITS SHOWN AND DESIGNATED HEREON AND DEFINED IN THE CONDOMINIUM DOCUMENTS AND THE LIMITED COMMON ELEMENTS. EXAMPLES OF COMMON ELEMENTS ARE: PARKING, PAVED AREAS, THE GROUNDS (WHETHER OR NOT LANDSCAPED), ALL PORTIONS OF THE BUILDINGS NOT A PART OF THE UNIT NOR DEFINED AS LIMITED COMMON ELEMENTS, AND ALL CONDUITS, INSTALLATIONS, WIRES, PIPES, EQUIPMENT, ETC. WHICH SERVE OTHER COMMON ELEMENTS OR WHICH SERVE MORE THAN ONE UNIT. REFERENCE IS HEREBY MADE TO THE DECLARATION OF CONDOMINIUM FOR ADDITIONAL DEFINITIONS, REGULATIONS, AND BUILDING RESTRICTIONS IMPOSED BY THE DEVELOPER AND/OR HIS ASSIGNS.

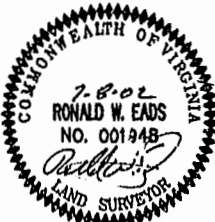
LCE-- LIMITED COMMON ELEMENTS

EXCEPT AS MAY BE OTHERWISE EXPRESSLY PROVIDED, LIMITED COMMON ELEMENTS INCLUDE ANY HEATING AND AIR CONDITIONING EQUIPMENT DESIGNED TO SERVE A SINGLE UNIT AS DEFINED IN THE CONDOMINIUM DOCUMENT, NOT WITHSTANDING THE FACT THE APPARATUS AND/OR EQUIPMENT LIES WITHIN A UNIT AND OR COMMON ELEMENT. REFERENCE IS HEREBY MADE TO THE DECLARATION OF CONDOMINIUM FOR ADDITIONAL DEFINITIONS, REGULATIONS, AND BUILDING RESTRICTIONS IMPOSED BY THE DEVELOPER AND/OR HIS ASSIGNS.

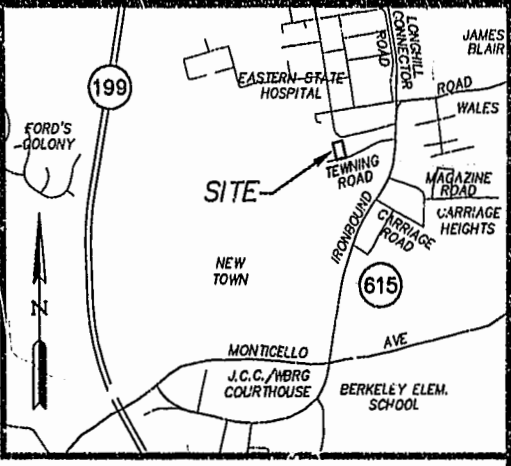
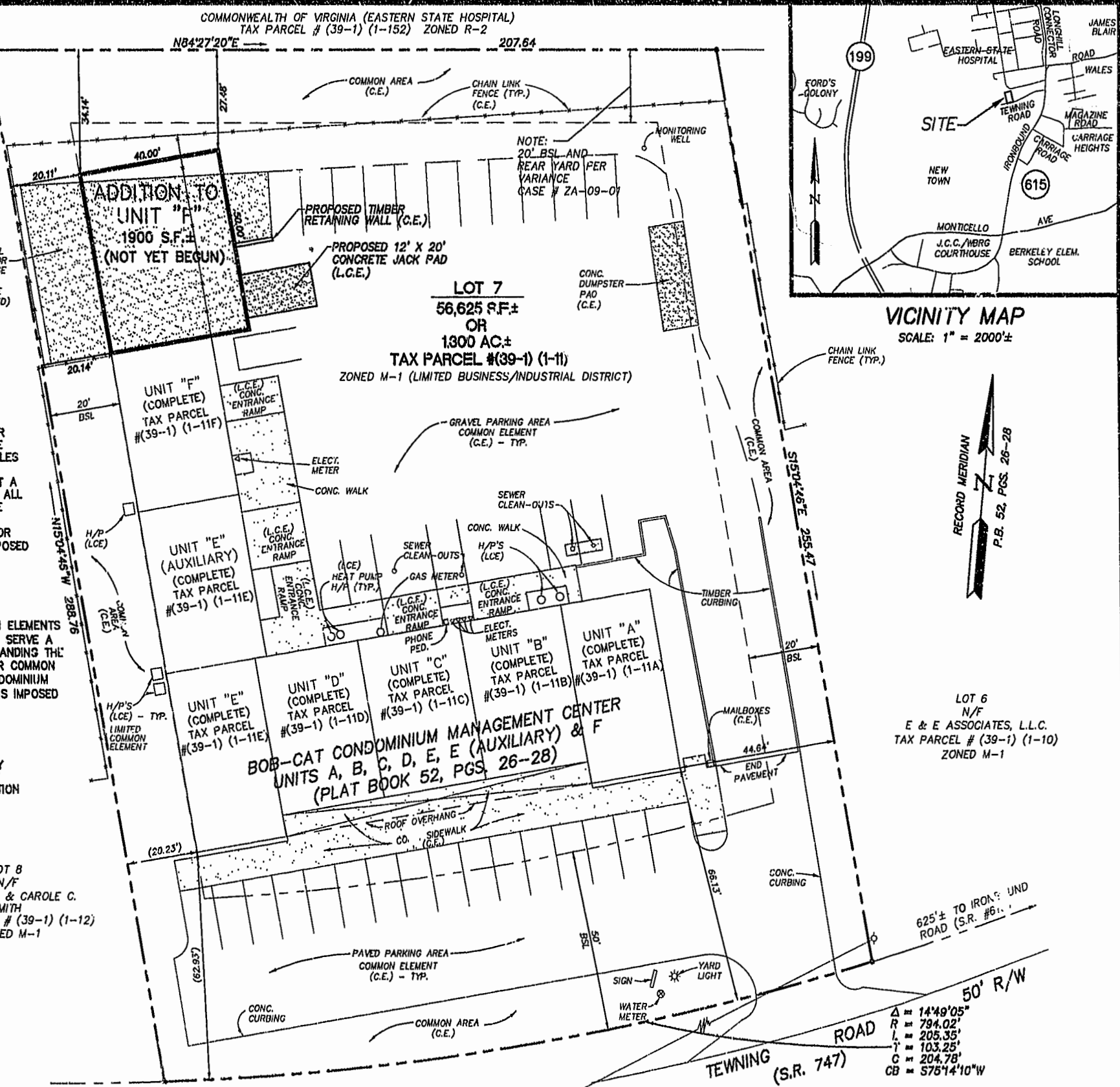
SURVEYOR'S CERTIFICATE

THE UNDERSIGNED, A LICENSED LAND SURVEYOR, DOES HEREBY CERTIFY THAT THIS PLAT IS ACCURATE AND COMPLIES WITH THE PROVISIONS OF VA. CODE ANN. SUBSECTION 55-79.58 A. CONSTRUCTION OF THE ADDITION TO UNIT "F" DEPICTED HEREON HAS NOT YET BEGUN.

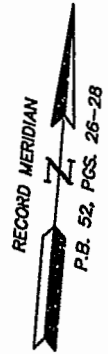
Ronald W. Eads, L.S. 7-8-02 DATE



LOT 8 N/F JAMES C. & CAROLE C. SMITH TAX PARCEL # (39-1) (1-12) ZONED M-1



VICINITY MAP SCALE: 1" = 2000'

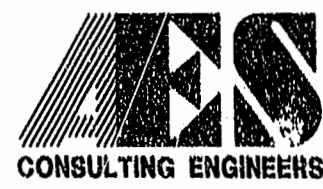


LOT 6 N/F E & E ASSOCIATES, L.L.C. TAX PARCEL # (39-1) (1-10) ZONED M-1

BOB-CAT CONDOMINIUM MANAGEMENT CENTER UNITS A, B, C, D, E, E (AUXILIARY) & F (PLAT BOOK 52, PGS. 26-28)

Δ = 14'49.05" R = 794.02' L = 205.35' T = 103.25' C = 204.78' CB = 575'14.10"W

07.08.02-08.13 6722P01.DWG JFS



5248 Olde Towne Road, Suite 1 Williamsburg, Virginia 23188 (757) 253-0040 Fax (757) 220-8994

EXHIBIT "B" PLAT OF BOB-CAT CONDOMINIUM MANAGEMENT CENTER ADDITION TO UNIT "F" OWNER/DEVELOPER: ROBERT F. RIPLEY & CATHERINE J. RIPLEY BERKELEY DISTRICT JAMES CITY COUNTY VIRGINIA

Table with columns: No., DATE, REVISION / COMMENT / NOTE, BY. Includes recording information for City of Williamsburg & County of James City.

Table with columns: Designed RWE, Drawn JFS, Scale 1"=20', Date 7/08/02, Project No. 6722-1, Drawing No. 1 OF 2.