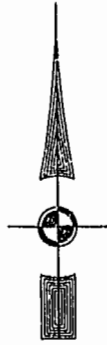


City of Williamsburg & County of James City  
 Circuit Court: This PLAT was recorded on  
August 7, 2002  
 at 2:22 AM/PM PB 87 PG 17 of 22  
 DOCUMENT # 020018083  
 BETSY B. WOOLRIDGE, CLERK  
C. Ann Fell, Dep. Clerk



46-1-01-0-0001  
 "GREENSPRINGS PLANTATION"  
 (DB 322, PG 254)

EXIST. 20' JAMES CITY COUNTY SERVICE  
 AUTHORITY SAN. SEWER EASEMENT AS  
 SHOWN IN AS-BUILT LOCATION. D.B. 141 - PG. 388

EXIST. 20' DRAINAGE EASEMENT  
 M.B. 65 - PG. 2

EXIST. 20' DRAINAGE EASMT:  
 M.B. 65 - PG. 2

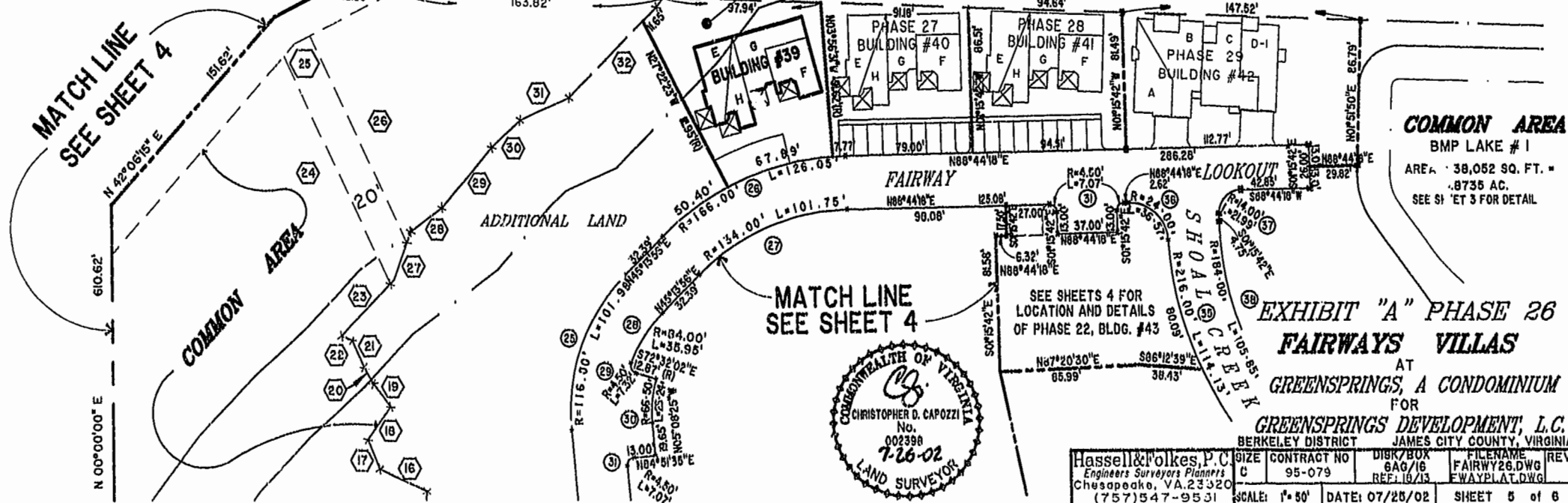
N 76°40'21" E  
 20' SANITARY SEWER EASEMENT

COMMON AREA  
 LIMITS OF 50' RPA  
 LIMITS OF 100' RMA

EX. 50' COLONIAL PIPELINE EASEMENT (D.B. 90 PG. 1)  
 PHASE 26 COMMON AREA

MATCH LINE  
 SEE SHEET 4

MATCH LINE  
 SEE SHEET 3



COMMON AREA  
 BMP LAKE # 1  
 AREA: 38,052 SQ. FT. =  
 .8735 AC.  
 SEE SHEET 3 FOR DETAIL

MATCH LINE  
 SEE SHEET 4



EXHIBIT "A" PHASE 26  
 FAIRWAYS VILLAS  
 AT  
 GREENSPRINGS, A CONDOMINIUM  
 FOR  
 GREENSPRINGS DEVELOPMENT, L.C.  
 BERKELEY DISTRICT JAMES CITY COUNTY, VIRGINIA

Hassell & Folkes, P.C. Engineers Surveyors Planners Chesapeake, VA 23320 (757) 547-9531	CONTRACT NO 95-079	DISK/BOX 6A9/16 REF: 18/13	FILENAME FAIRWAY26.DWG FWAYPLAT.DWG	REV.
SCALE: 1"=50'	DATE: 07/26/02	SHEET 5 of 6		