

City of Williamsburg & County of James City
 Circuit Court: This PLAT was recorded on
August 7, 2002
 at 2:22 AM (M) HB 27 PG 17-22
 DOCUMENT # 020018083
 BETSY B. WOOLRIDGE, CLERK
C. David Fell, Dep. Clerk

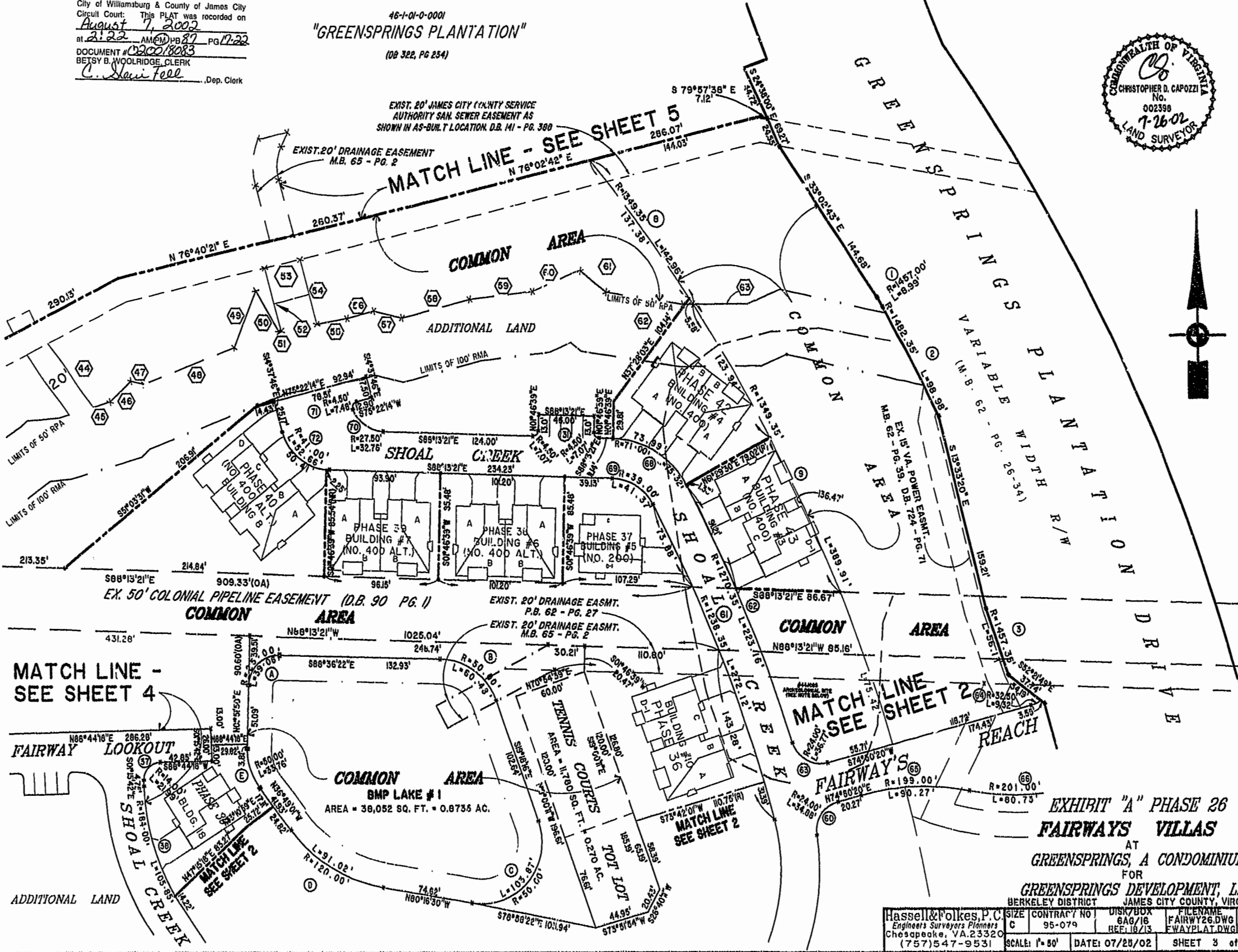
46-1-01-0-0001
 "GREENSPRINGS PLANTATION"
 (08 322, PG 254)



EXIST. 20' JAMES CITY COUNTY SERVICE
 AUTHORITY SAN. SEWER EASEMENT AS
 SHOWN IN AS-BUILT LOCATION D.B. 141 - PG. 388

EXIST. 20' DRAINAGE EASEMENT
 M.B. 65 - PG. 2

MATCH LINE - SEE SHEET 5
 N 76°02'42" E
 286.07'
 144.03'



MATCH LINE -
 SEE SHEET 4

MATCH LINE
 SEE SHEET 2

EXHIBIT "A" PHASE 26
 FAIRWAYS VILLAS
 AT
 GREENSPRINGS, A CONDOMINIUM
 FOR
 GREENSPRINGS DEVELOPMENT, L.C.
 BERKELEY DISTRICT JAMES CITY COUNTY, VIRGINIA

Hassell & Polkes, P.C. Engineers Surveyors Planners Chesapeake, VA. 23320 (757) 547-9531	SIZE: C CONTRACT NO: 95-079	DISK/BOX: 8A0/16 REF: 16/13	FILENAME: FAIRWAY26.DWG FWAYPLAT.DWG	REV.:
SCALE: 1" = 80'	DATE: 07/28/02	SHEET 3 of 6		