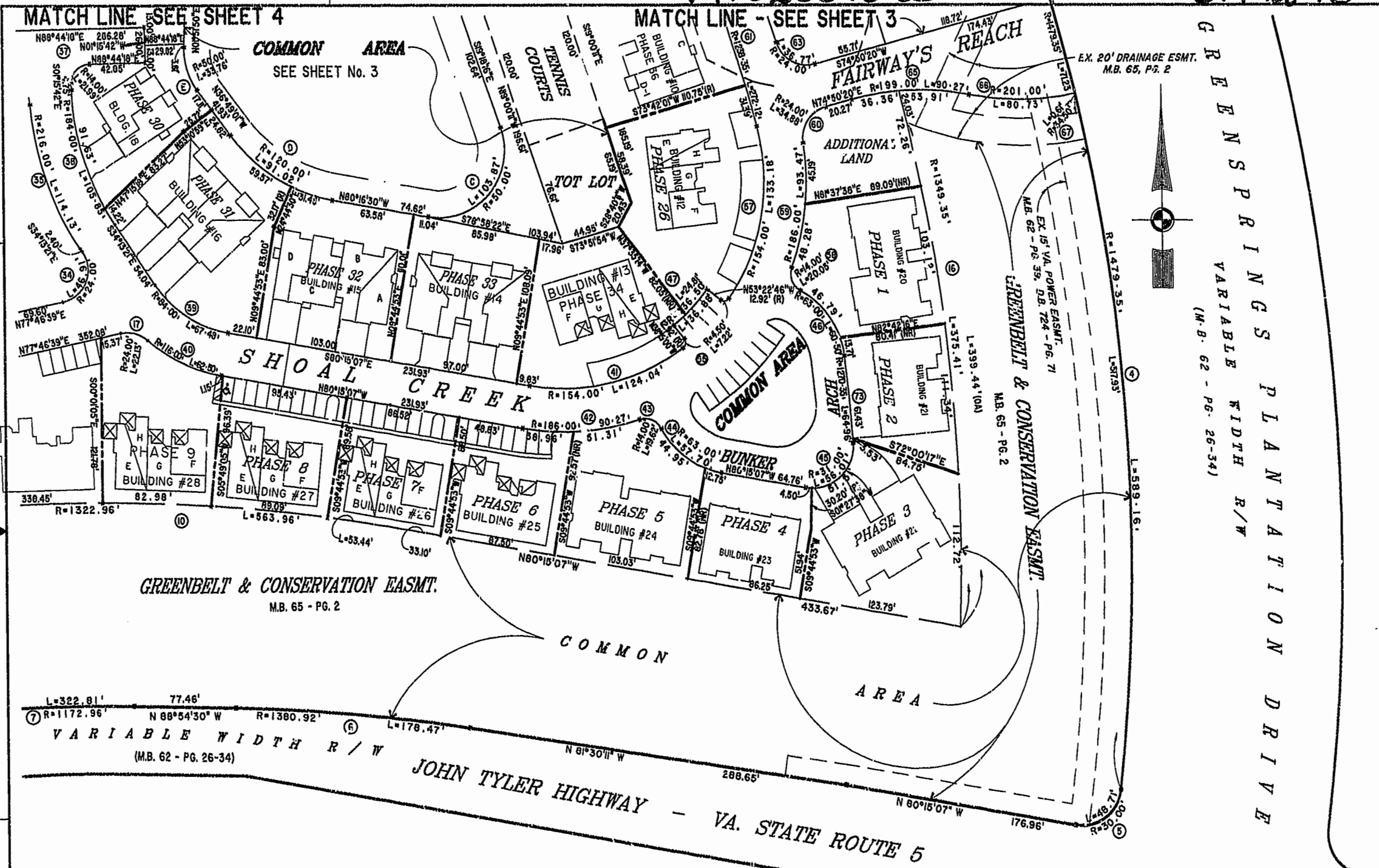


#020018083

87 PAGE 18



GREENBELT & CONSERVATION EASMT.
 M.B. 65 - PG. 2
 EX. 20' DRAINAGE ESMT.
 M.B. 65, PG. 2
 GREENBELT & CONSERVATION EASMT.
 M.B. 65 - PG. 2
 EX. 15' VA. POWER EASMT.
 M.B. 62 - PG. 39, D.B. 724 - PG. 71
 EX. 15' VA. POWER EASMT.
 M.B. 62 - PG. 26-34
 GREENBELT & CONSERVATION EASMT.
 M.B. 65 - PG. 2
 EX. 15' VA. POWER EASMT.
 M.B. 62 - PG. 39, D.B. 724 - PG. 71
 EX. 15' VA. POWER EASMT.
 M.B. 62 - PG. 26-34

EXHIBIT "A" PHASE 26
FAIRWAYS VILLAS
 AT
 GREENSPRINGS, A CONDOMINIUM
 FOR
GREENSPRINGS DEVELOPMENT, L.C.
 BERKELEY DISTRICT JAMES CITY COUNTY, VIRGINIA



City of Williamsburg & County of James City
 Circuit Court: This PLAT was recorded on
August 7, 2002
 at 2:32 AM in PG 27 of PG 27-22
 DOCUMENT # 020018083
 BETSY B. WOOLRIDGE, CLERK
C. New Free, Dep. Clerk

Hassell & Polkes, P.C. Engineers Surveyors Planners Chesapeake, VA 23320 (757) 547-3131	SIZE: C CONTRACT NO: 95-079	DISK/BOX: 6A6/16 REF: 18/13	FILENAME: FAIRWY26.DWG EWAYPLAT.DWG	REV.
SCALE: 1"=50'	DATE: 07/26/02	SHEET 2 of 6		