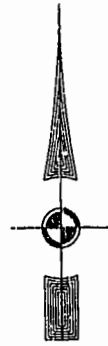


EXIST. 20' JAMES CITY COUNTY SERVICE AUTHORITY SAN. SEWER EASEMENT AS SHOWN IN AS-BUILT LOCATION, D.B. 141 - PG. 398

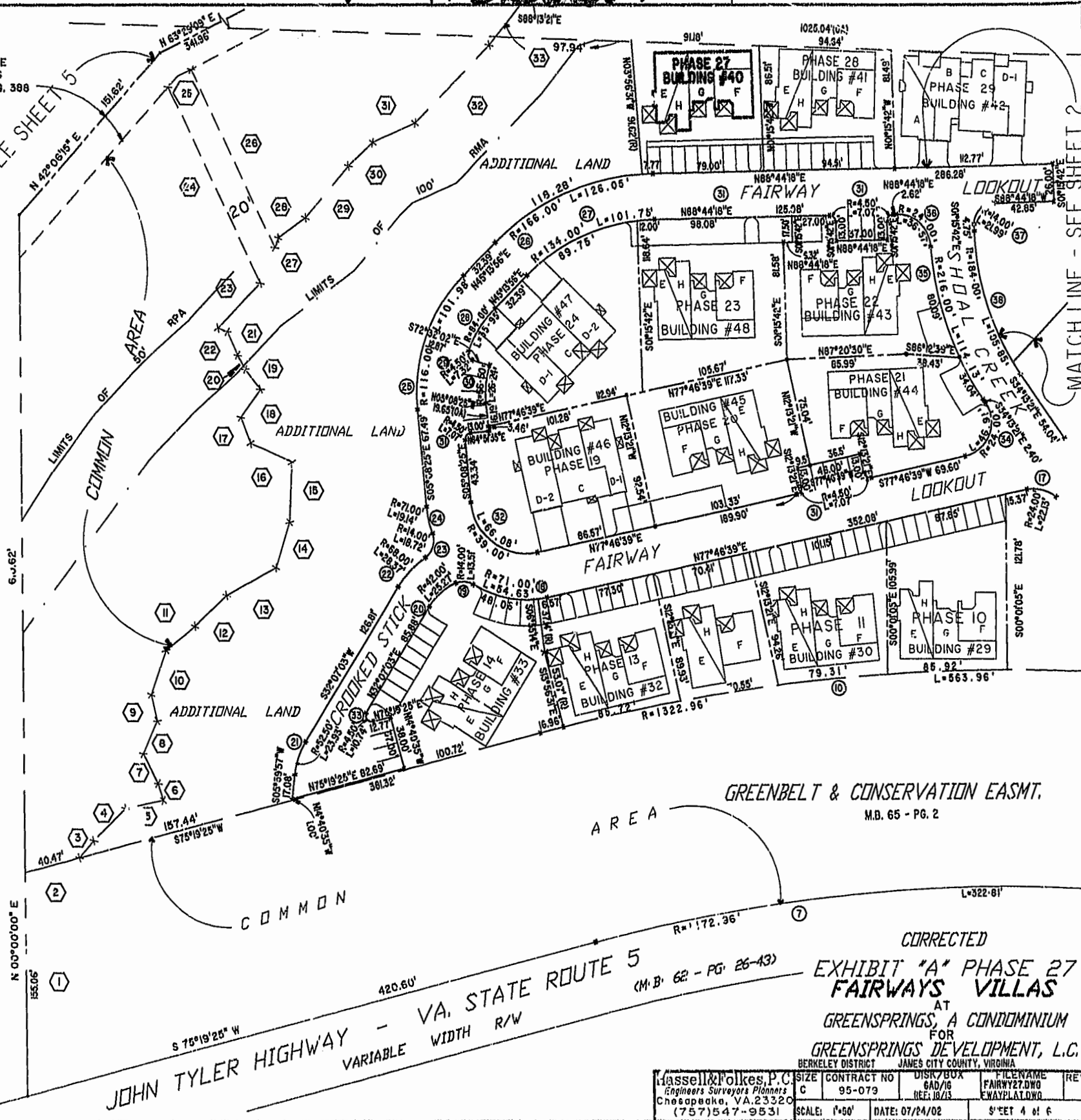


MATCH LINE - SEE SHEET 5

MATCH LINE - SEE SHEET 2

46-1-01-0-0001  
"GREENSPRINGS PLANTATION"  
(DB 322, PG 254)

City of Williamsburg & County of James City  
Circuit Court: This PLAT was recorded on  
August 7, 2002  
at 2:12 AM (PM) PB 87 PG 11-16  
DOCUMENT # 020018082  
BETSY B. WOOLRIDGE, CLERK  
C. Newell, Dep. Clerk



VA. STATE ROUTE 5  
JOHN TYLER HIGHWAY - VARIABLE WIDTH R/W  
M.B. 62 - PG. 26-43

GREENBELT & CONSERVATION EASMT.  
M.B. 65 - PG. 2

CORRECTED  
EXHIBIT "A" PHASE 27  
FAIRWAYS VILLAS  
AT  
GREENSPRINGS, A CONDOMINIUM  
FOR  
GREENSPRINGS DEVELOPMENT, L.C.  
BERKELEY DISTRICT JAMES CITY COUNTY, VIRGINIA

Hassell & Folkes, P.C. Engineers Surveyors Planners Chesapeake, VA. 23320 (757)547-9531	SIZE	CONTRACT NO.	DISK/BOX	FILENAME	REV.
	C	95-079	6AD/16 REF: 10/13	FAIRWY27.DWG FWAYPLAT.DWG	
SCALE: 1"=50'	DATE: 07/24/02	SHEET 4 of 6			