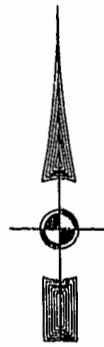
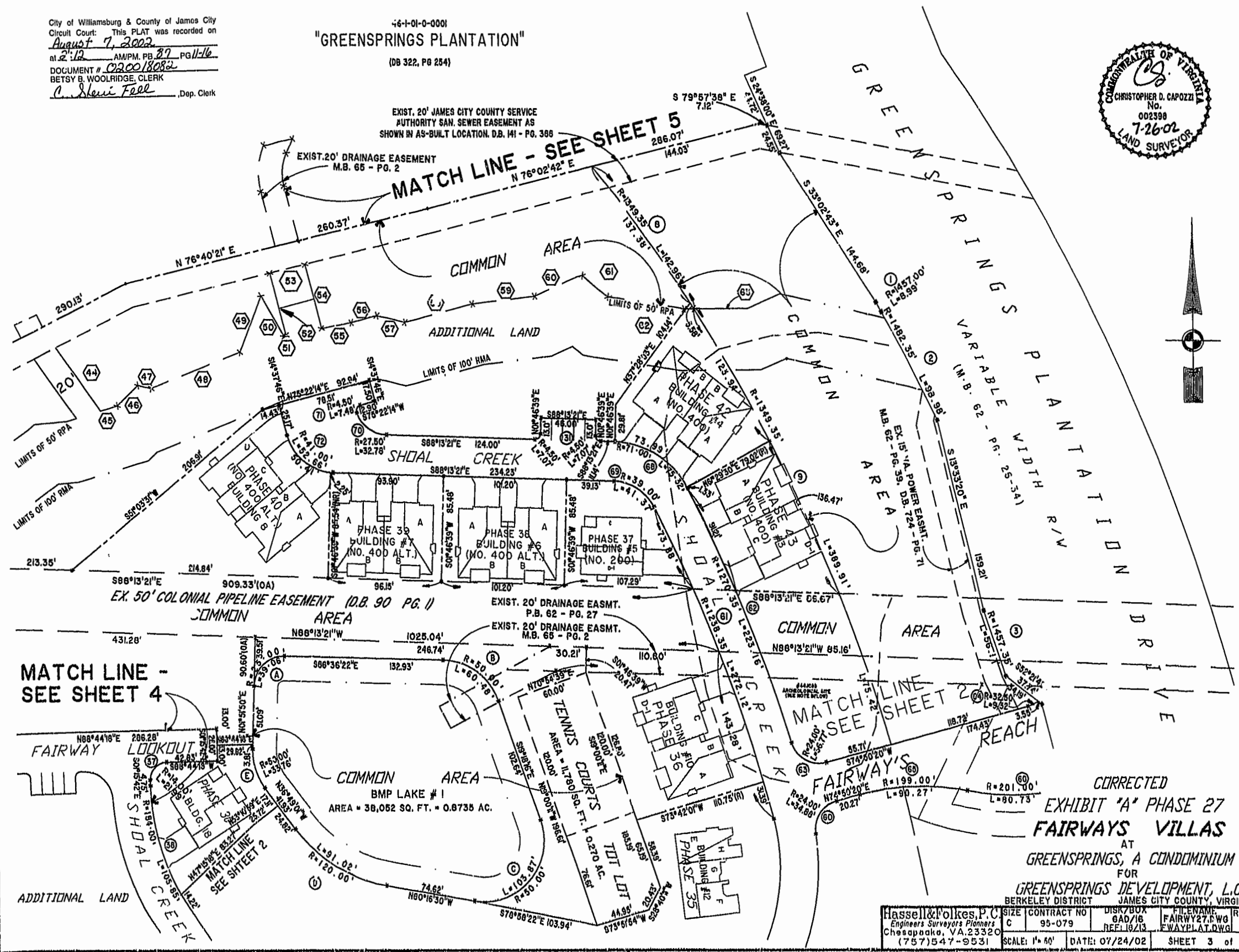
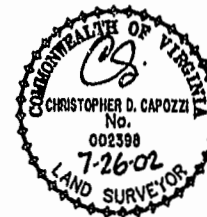


City of Williamsburg & County of James City
 Circuit Court: This PLAT was recorded on
August 7, 2002
 at 2:12 AM/PM, PB 27, PG 11-16
 DOCUMENT # 020018082
 BETSY B. WOOLRIDGE, CLERK
C. Sheri Felt, Dep. Clerk

"GREENSPRINGS PLANTATION"

46-1-01-0-0001
 (DB 322, PG 254)

EXIST. 20' JAMES CITY COUNTY SERVICE
 AUTHORITY SAN. SEWER EASEMENT AS
 SHOWN IN AS-BUILT LOCATION, D.B. 141 - PG. 368



MATCH LINE - SEE SHEET 4

MATCH LINE - SEE SHEET 5

MATCH LINE - SEE SHEET 2

CORRECTED
 EXHIBIT "A" PHASE 27
FAIRWAYS VILLAS
 AT
 GREENSPRINGS, A CONDOMINIUM
 FOR
 GREENSPRINGS DEVELOPMENT, L.C.
 BERKELEY DISTRICT JAMES CITY COUNTY, VIRGINIA

Hassel & Polkes, P.C. Engineers Surveyors Planners Chesapeake, VA 23320 (757) 547-9531	SIZE CONTRACT NO C 95-079	DISK/BOX GAD/16 REF 10/13	FILENAME FAIRWY27.PWG FWAYPLAT.DWG	REV. SCALE: 1" = 50' DATE: 07/24/02 SHEET 3 of 6
---	------------------------------	---------------------------------	--	---