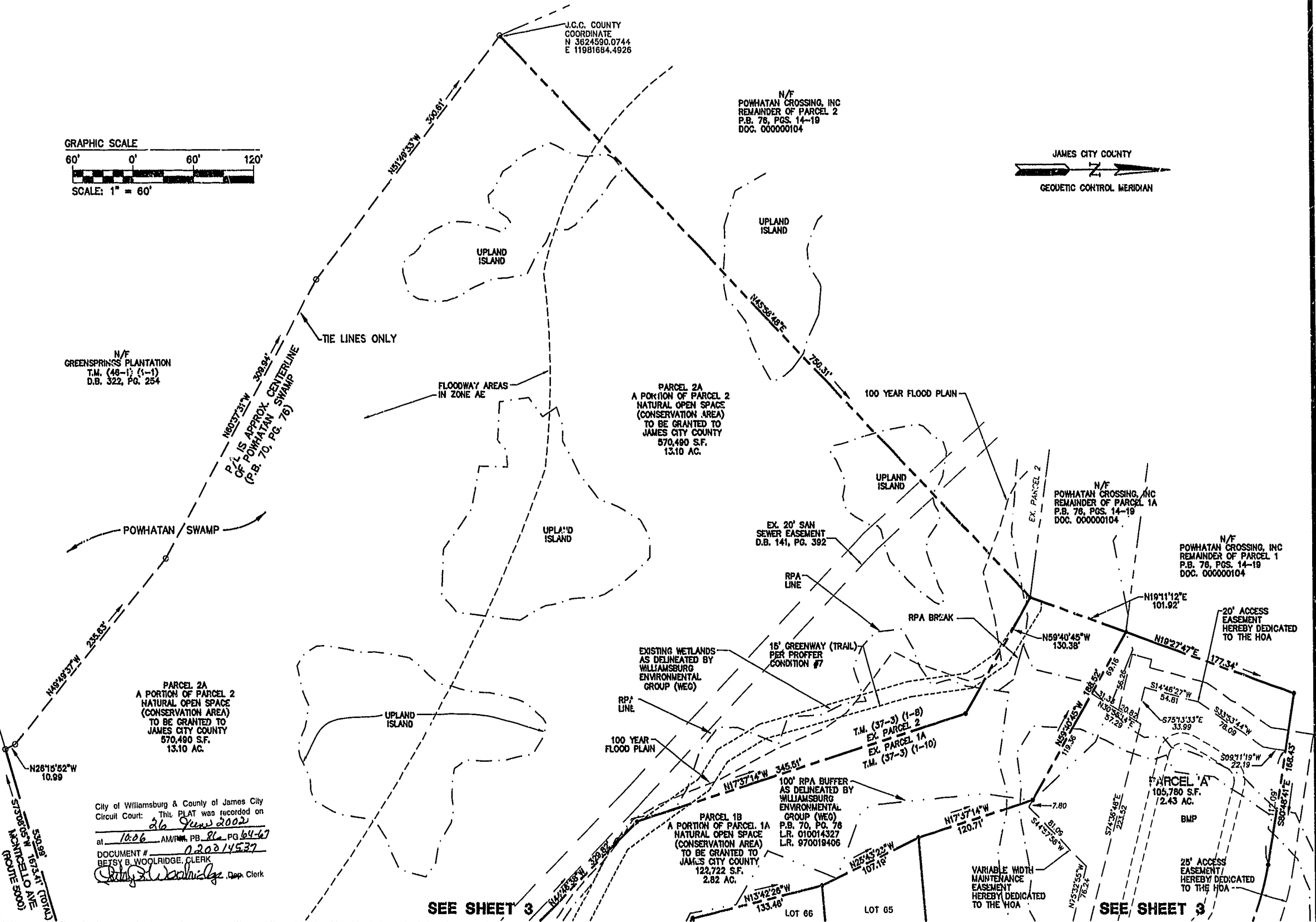


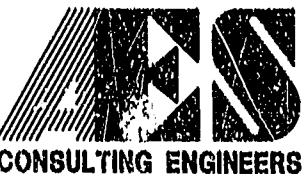
J.C.C. COUNTY  
COORDINATE  
N 3824590.0744  
E 11981684.4926

N/F  
POWHATAN CROSSING, INC  
REMAINDER OF PARCEL 2  
P.B. 76, PGS. 14-19  
DOC. 000000104

N/F  
GREENSPRING PLANTATION  
T.M. (48-1) (1-1)  
D.B. 322, PG. 254

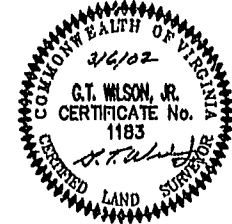


City of Williamsburg & County of James City  
Circuit Court: This PLAT was recorded on  
26 June 2002  
at 10:06 AM/TM, PB 86, PG 64-67  
DOCUMENT # 020214537  
BETSY B. WOOLRIDGE, CLERK  
*Betsy B. Woolridge* Dep. Clerk



5248 Olde Towne Road, Suite 1  
Williamsburg, Virginia 23188  
(757) 253-0040  
Fax (757) 220-8994

PLAT OF SUBDIVISION  
**MONTICELLO WOODS**  
LOTS 1-5 AND 55-73  
OWNED BY: POWHATAN CROSSING, INC.  
BERKELEY DISTRICT JAMES CITY COUNTY VIRGINIA



No.	DATE	REVISION / COMMENT / NOTE	BY
3	5/20/02	REVISED PER COUNTY COMMENTS	JFS
2	4/19/02	REVISED PER VDOT	JFS
1	4/16/02	REVISED PER COUNTY COMMENTS	JFS

Designed	Drawn
AES	JFS
Scale	Date
1"=60'	3/6/02
Project No.	
8130-1	
Drawing No.	
4 OF 4	