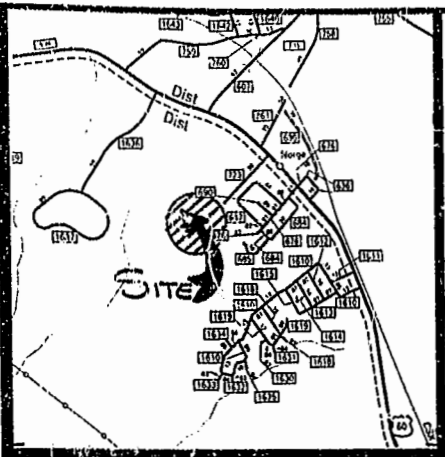


020014027

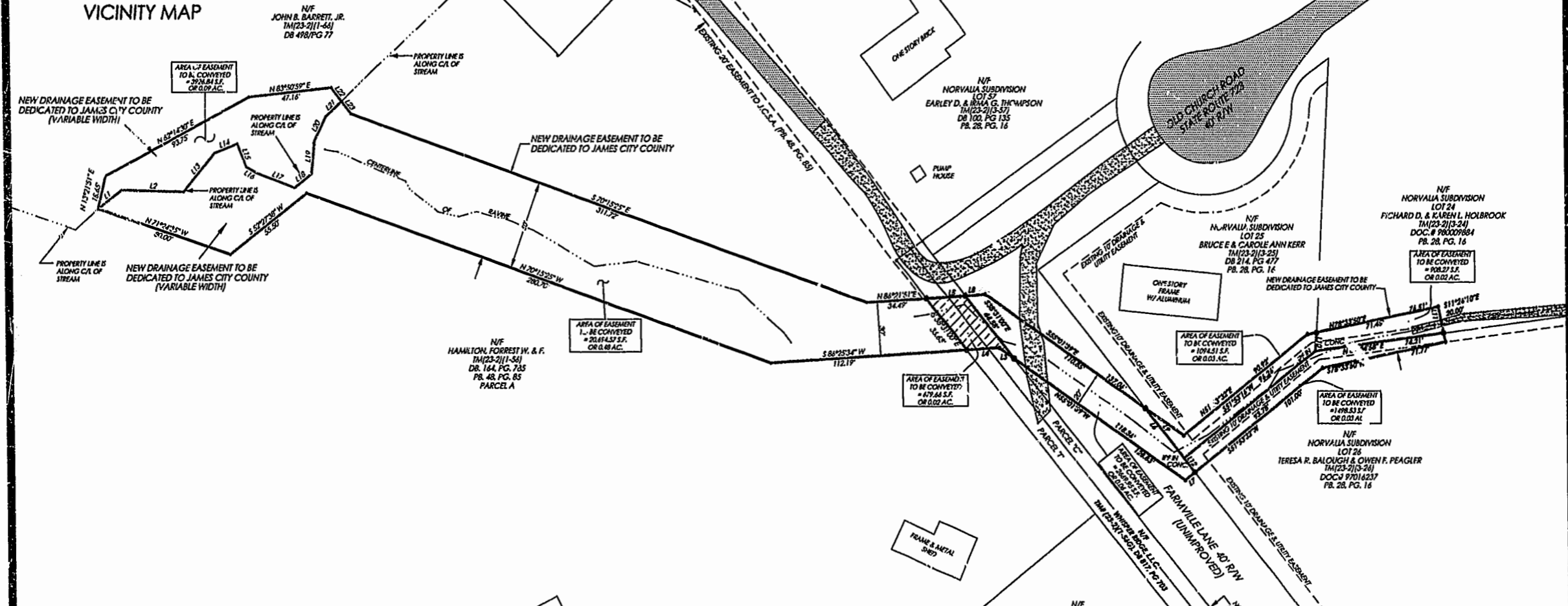
86 PAGE 59

EASEMENT PLAT
TO BE CONVEYED TO
JAMES CITY COUNTY
BEING

VARIABLE WIDTH DRAINAGE EASEMENT
LOCATED: POWHATAN MAGISTERIAL DISTRICT,
JAMES CITY COUNTY, VIRGINIA
DATE: APRIL 11, 2001 SCALE: 1" = 40'
MITCHELL-WILSON ASSOCIATES, P.C.
CIVIL ENGINEERS & LAND SURVEYORS
720 MAIN STREET, SUITE 112
P.O. BOX 1249
WEST POINT, VIRGINIA 23181
(804) 843-9744



VICINITY MAP



LINE TABLE

NUMBER	DIRECTION	DISTANCE
L1	N 52° 49' 28" E	17.26
L2	S 86° 10' 31" E	35.36
L3	N 55° 01' 39" W	10.46
L4	S 86° 30' 29" W	18.65
L5	N 86° 30' 29" E	22.26
L6	S 38° 08' 32" E	45.07
L7	S 51° 53' 37" W	7.22
L8	N 85° 30' 29" E	11.78
L9	N 38° 08' 32" W	35.08
L10	S 03° 10' 55" W	10.28
L11	S 11° 26' 10" E	14.93
L12	N 38° 08' 32" W	10.00
L13	N 40° 09' 10" E	28.06
L14	N 68° 43' 57" E	14.02
L15	S 21° 58' 41" E	13.83
L16	S 69° 20' 57" E	6.66
L17	S 69° 00' 51" E	23.36
L18	N 51° 31' 05" E	12.38
L19	N 05° 26' 38" E	18.57
L20	N 25° 43' 40" E	14.67
L21	N 47° 16' 02" E	12.48
L22	S 37° 32' 16" E	9.64
L23	S 37° 32' 22" E	8.77

City of Williamsburg & County of James City
Circuit Court: This PLAT was recorded on
June 19, 2002
at 9:03 AM/PM, PB. 86, PG. 59
DOCUMENT # 020014027
BETSY B. WOOLRIDGE, CLERK

