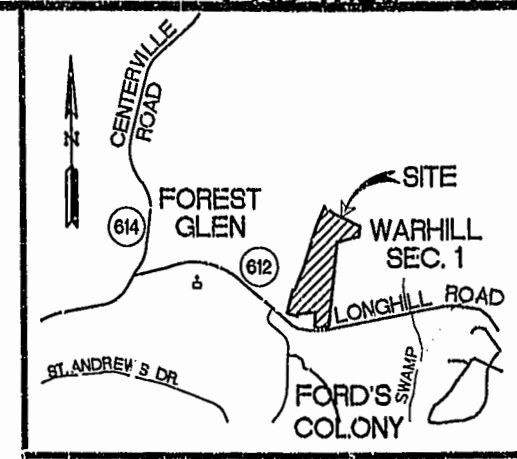


020013086

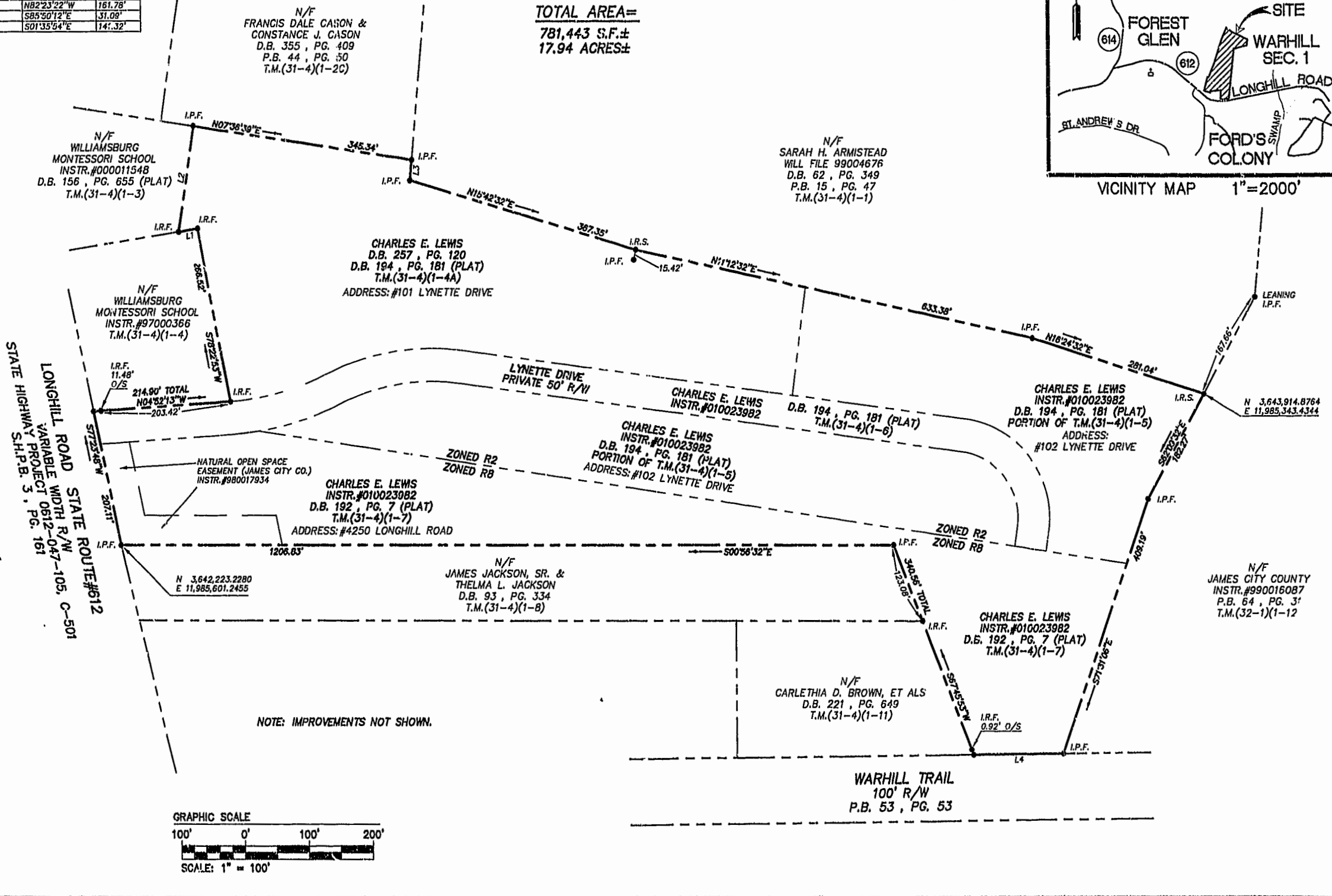
86 PAGE 39

NUMBER	BEARING	DISTANCE
L1	S10°02'35"E	30.06'
L2	N82°23'22"W	161.78'
L3	S85°50'12"E	31.09'
L4	S01°35'54"W	141.32'

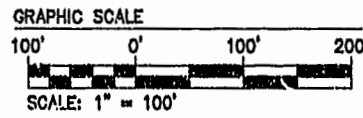
JAMES CITY COUNTY
 GEODETIC CONTROL NETWORK
 MONUMENT STA. 310



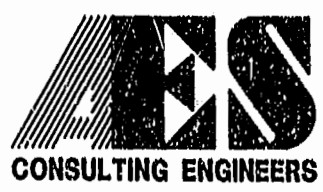
TOTAL AREA=
 781,443 S.F.±
 17.94 ACRES±



NOTE: IMPROVEMENTS NOT SHOWN.



JKR 05.21.02-10.21 8358BNDY.dwg



5248 Olde Towne Road, Suite 1
 Williamsburg, Virginia 23188
 (757) 253-0040
 Fax (757) 220-8994

PLAT OF SURVEY
 ON VARIOUS PARCELS
 CONTAINING 17.94 ACRES±
 OWNED BY
 CHARLES E. LEWIS
 POWHATAN DISTRICT JAMES CITY COUNTY VIRGINIA



No.	DATE	REVISION / COMMENT / NOTE	BY

Designed 000	Drawn JKR
Scale 1"=100'	Date 5/21/2002
Project No. 8398-1	
Drawing No. 10F1	