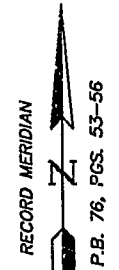


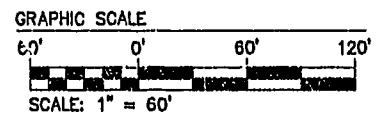
#1020012703

N/F HAMPTON ROADS DEVELOPMENT, LLC DOC. #000005190 T.M. (46-1) 1-2C

City of Williamsburg & County of James City Circuit Court: This PLAT was recorded on 31 May 2002 at 12:37 AM PM, P.B. 76, PG. 36-38 DOCUMENT # 02 0012703 BETSY B. WOOLRIDGE, CLERK



NOTE: JAMES CITY COUNTY COORDINATES REFERENCED ON THIS SHEET ARE FOR GIS PURPOSES ONLY. ALL PROPERTY LINE INFORMATION SHOWN ON THIS PLAT IS BASED ON RECORD MERIDIAN.

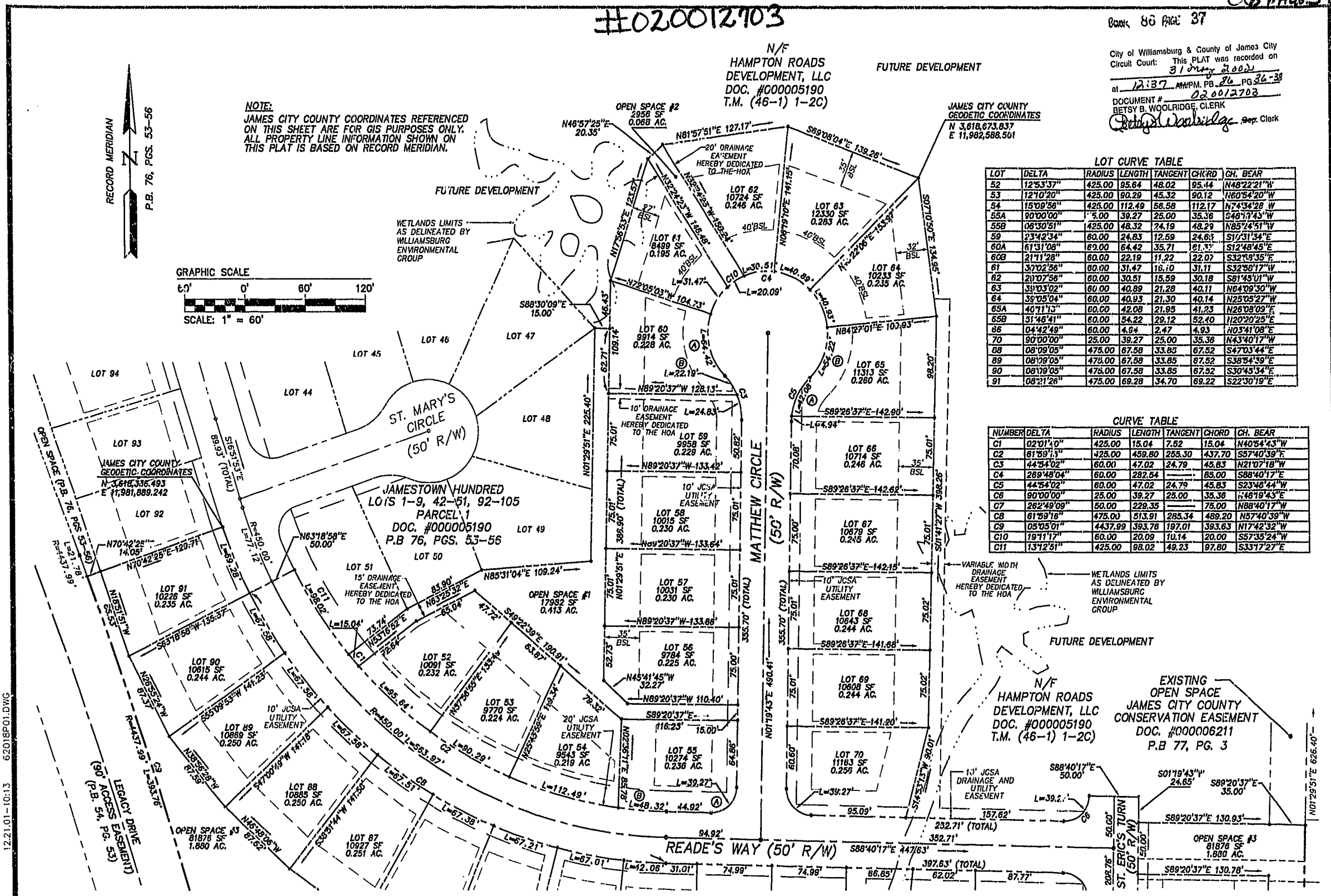


**LOT CURVE TABLE**

LOT	DELTA	RADIUS	LENGTH	TANGENT	CHORD	CH. BEAR
52	125°33'37"	425.00	95.64	48.02	95.44	N48°22'21"W
53	121°0'20"	425.00	80.29	45.32	90.12	N60°54'20"W
54	150°09'56"	425.00	112.49	56.58	112.17	N74°34'28"W
55A	90°00'00"	5.00	39.27	25.00	35.36	S49°17'43"W
55B	36°30'51"	425.00	48.32	24.19	48.29	N85°24'51"W
59	23°42'34"	60.00	24.83	12.59	24.61	S17°31'34"E
60A	61°31'08"	60.00	64.42	35.71	61.31	S12°48'45"E
60B	21°11'28"	60.00	22.19	11.22	22.07	S32°58'35"E
61	32°02'56"	60.00	31.47	16.10	31.11	S32°58'17"W
62	21°07'56"	60.00	30.51	15.59	30.18	S61°45'01"W
63	33°03'02"	60.00	40.89	21.28	40.11	N64°09'30"W
64	38°05'04"	60.00	40.93	21.30	40.14	N25°05'27"W
65A	40°11'15"	60.00	42.08	21.95	41.23	N26°08'09"E
65B	31°46'41"	60.00	54.22	29.12	52.40	N20°20'25"E
66	04°42'49"	60.00	4.64	2.47	4.93	N03°41'08"E
70	90°00'00"	25.00	39.27	25.00	35.36	N43°40'17"W
88	08°09'05"	475.00	67.58	33.83	67.52	S47°03'44"E
89	08°09'05"	475.00	67.58	33.85	67.52	S38°54'39"E
90	08°09'05"	475.00	67.58	33.85	67.52	S30°45'34"E
91	08°11'26"	475.00	69.28	34.70	69.22	S22°30'19"E

**CURVE TABLE**

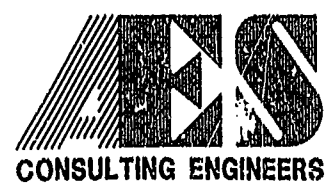
NUMBER	DELTA	RADIUS	LENGTH	TANGENT	CHORD	CH. BEAR
C1	02°01'40"	425.00	15.04	7.52	15.04	N40°54'43"W
C2	61°59'11"	425.00	459.60	265.30	437.70	S57°40'39"E
C3	44°54'02"	60.00	47.02	24.79	45.83	N21°07'18"W
C4	289°48'04"	60.00	282.54	168.00	85.00	S88°40'17"E
C5	44°54'02"	60.00	47.02	24.79	45.83	S23°48'44"W
C6	90°00'00"	25.00	39.27	25.00	35.36	N48°19'43"E
C7	282°49'09"	50.00	229.35	139.00	75.00	N88°40'17"W
C8	61°59'16"	475.00	513.91	285.34	489.20	N57°40'39"W
C9	05°05'01"	4437.99	393.78	197.01	393.63	N17°42'32"W
C10	19°11'17"	60.00	20.09	10.14	20.00	S57°35'24"W
C11	13°12'51"	425.00	98.02	49.23	97.80	S33°17'27"E



SEE SHEET 3

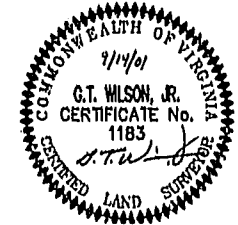
THIS SHEET ADDRESSES LOTS 52-70 AND 88-91

SEE SHEET 3



2548 Olde Towne Road, Suite 1 Williamsburg, Virginia 23188 (757) 253-0040 Fax (757) 220-8994

PLAT OF SUBDIVISION  
 LOTS 52-91  
 JAMESTOWN HUNDRED  
 OWNED BY  
 HAMPTON ROADS DEVELOPMENT, L.L.C.  
 BERKELEY DISTRICT JAMES CITY COUNTY VIRGINIA



No.	DATE	REVISION / COMMENT / NOTE	BY
1	12/18/01	REVISED SETBACK LINES FOR LOTS 61 AND 64 PER OWNER AND COUNTY COMMENTS	JFS

Designed	Drawn
AES	JFS
Scale	Date
1"=60'	9/14/01
Project No.	
6201-8	
Drawing No.	
2 OF 3	