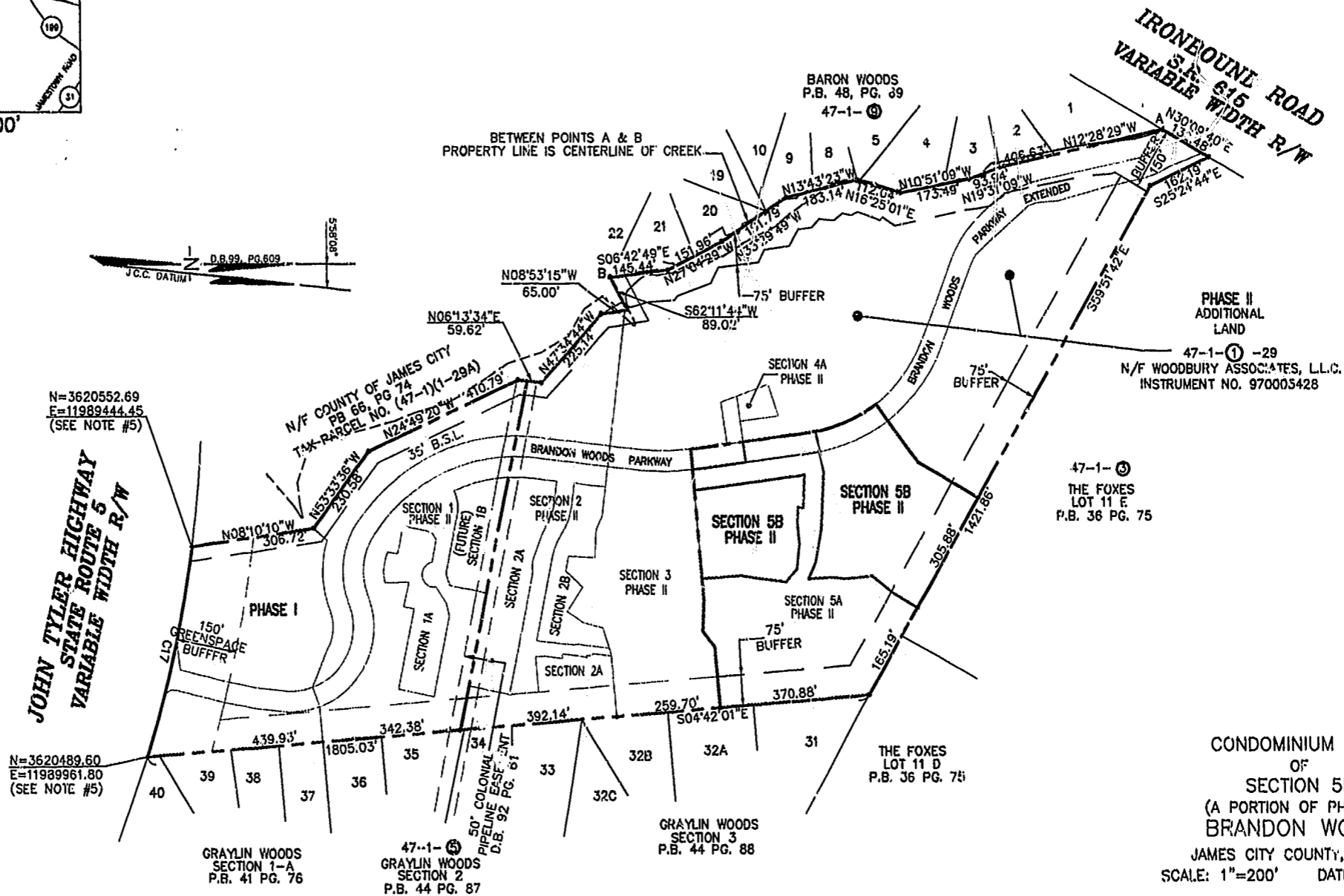


CURVE TABLE						
CURVE	LENGTH	RADIUS	TANGENT	CHORD BEARING	CHORD	DELTA
C17	521.88'	2904.79'	261.65'	N77°04'44"W	521.18'	10°17'38"



N=3620552.69  
E=11989444.45  
(SEE NOTE #5)

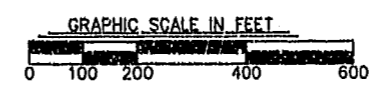
N=3620489.60  
E=11989961.80  
(SEE NOTE #5)

CONDOMINIUM PLAT  
OF  
SECTION 5B  
(A PORTION OF PHASE II)  
BRANDON WOODS  
JAMES CITY COUNTY, VIRGINIA  
SCALE: 1"=200' DATE: 5/21/02

SHEET 1 OF 5

**LANDMARK DESIGN GROUP**  
Engineers • Planners • Surveyors  
Landscape Architects • Environmental Consultants  
4029 IRONBOUND ROAD SUITE 100  
WILLIAMSBURG, VA 23188  
TEL (757) 253-2975 FAX(757) 229-0049

City of Williamsburg & County of James City  
Circuit Court: This PLAT was recorded on  
30 May 2002  
at 3:31 P.M. P.B. 86 PG. 31-35  
DOCUMENT # 020012640  
BETSY B. WOOLRIDGE, CLERK  
*Betsy B. Woolridge*, Clerk



DRAWN BY: LFV  
CHKD. BY: DEW  
PROJ. NO.: 1980074-000.G1  
DWG. NO.: 13296W