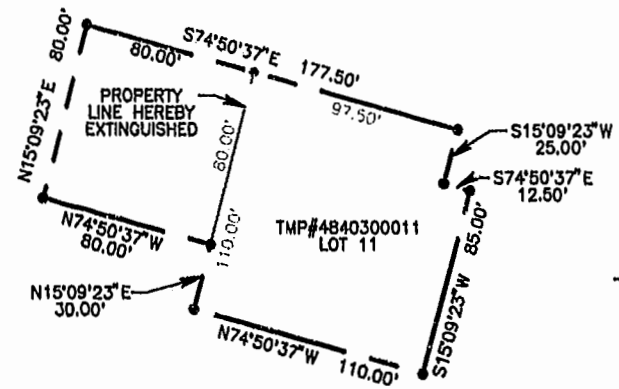
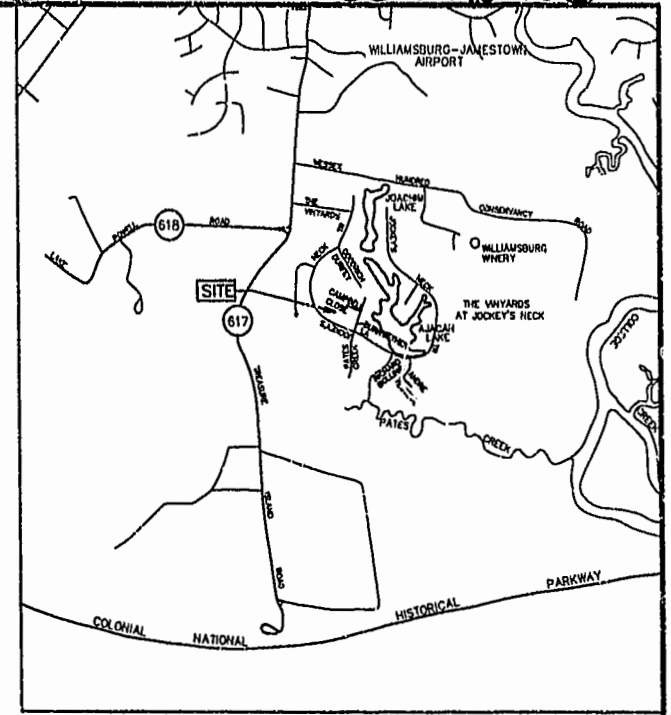




TMP#4840100011
OPEN SPACE
NEW AREA
4.8317 AC.
OLD AREA
4.9787 AC.

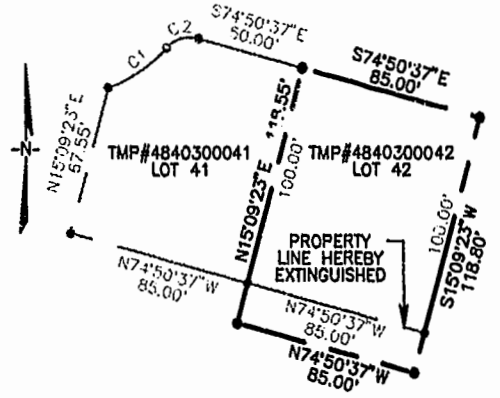


INSET A
SCALE: 1"=50'



VICINITY MAP SCALE: 1"=2000'

LINE	RADIUS	ARC	CHORD BEARING	CHORD	DELTA	TANGENT
C1	70.000'	33.082'	N56°46'04"E	32.775'	27°04'39"	16.856'
C2	15.000'	16.213'	N74°11'33"E	15.435'	61°55'39"	9.000'



INSET B
SCALE: 1"=50'

VILLAGE HOUSING AT THE VINEYARDS
BOUNDARY LINE ADJUSTMENT OF
LOTS 11, 41 AND 42

JAMESTOWN DISTRICT
JAMES CITY COUNTY, VIRGINIA
SCALE: 1" = 100' 3-29-02
SHEET 2 OF 2



Engineers • Planners • Surveyors
Landscape Architects • Environmental Consultants

4029 Ironbound Road Suite 100
Williamsburg, VA 23188
Tel. (757) 253-2975
Fax (757) 229-0949
Email: lmdg@landmarkdgb.com

5544 Greenweld Road Suite 200
Virginia Beach, VA 23462
Tel. (757) 473-2000
Fax (757) 497-7933
Email: lmdg@landmarkdgb.com

City of Williamsburg & County of James City
Circuit Court: This PLAT was recorded on
17 July 2002
at 3:17 P.M. PB 86 PG 21 of 25
DOCUMENT # 020011863
BETSY B. WOOLRIDGE, CLERK
Betsy Woolridge, Reg. Clerk

GRAPHIC SCALE 1"=100'

