

02001275

86 PAGE 15

AMENDED PLAT OF SUBDIVISION
WATERFORD
 AT
POWHATAN SECONDARY
 PHASE THIRTY-THREE
 BERKELEY DISTRICT
 JAMES CITY COUNTY, VIRGINIA

DATE: 10/21/98 SHEET 2 OF 3 SCALE: 1"=100'

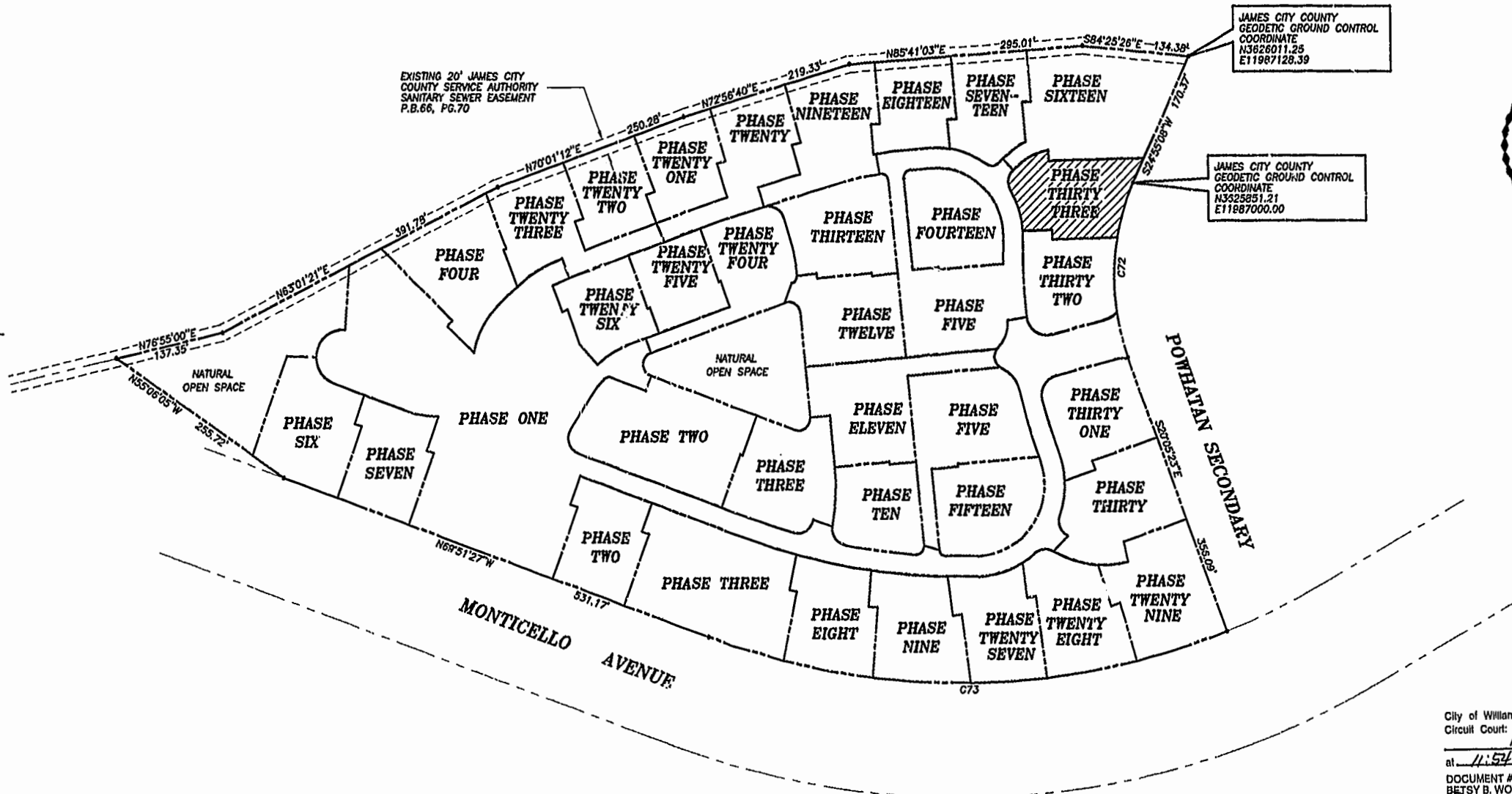
PROJECT NO: 97-008 DRAWN BY: SJB



SLEDD & ASSOCIATES, P.C.
 ENGINEERS PLANNERS SURVEYORS
 11832 ROCK LANDING DRIVE, SUITE 203
 NEWPORT NEWS, VIRGINIA 23606
 (757) 873-3398

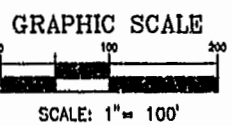
00°32'24"
 JAMES CITY COUNTY
 GEODETIC GROUND CONTROL
 MERIDIAN
 PLAT BOOK 66, PAGE 70

NOW OR FORMERLY
 POWHATAN ENTERPRISES, INC.



JAMES CITY COUNTY
 GEODETIC GROUND CONTROL
 COORDINATE
 N3626011.25
 E11987128.39

JAMES CITY COUNTY
 GEODETIC GROUND CONTROL
 COORDINATE
 N3325851.21
 E11887000.00



CURVE DATA

NUMBER	D. JA	RADIUS	LENGTH	TANGENT	CHORD	CHORD BEARING
C72	45°00'31"	280.00'	219.95'	116.00'	214.34'	S02°24'52"W
C73	41°26'14"	924.91'	668.91'	349.84'	654.43'	S89°25'26"W

City of Williamsburg & County of James City
 Circuit Court: This PLAT was recorded on
 13 May 2002
 at 11:54 AM/PM, PB 86, PG 14-16
 DOCUMENT # 02001275
 BETSY B. WOOLRIDGE, CLERK