

PREVIOUSLY RELEASED TO JAMESTOWN, LLC.

FUTURE BMP/POND AREA

PROPOSED 100' AND VARIABLE BOULEVARD STYLE COMMON INGRESS/EGRESS RIGHT OF WAY BETWEEN GREENSPRINGS PLANTATION, INC. AND JAMESTOWN, LLC. 4.41± ACRES (TOTAL)

FUTURE DEVELOPMENT AREA PHASE-IV

FUTURE WILLIAMSBURG NATIONAL GOLF CLUB HOLE #B-9

REMAINING AREA HEREBY RELEASED FROM DEED OF TRUST

BALANCE OF UNRELEASED LAND RESERVED PARCEL #6 25.36± ACRES

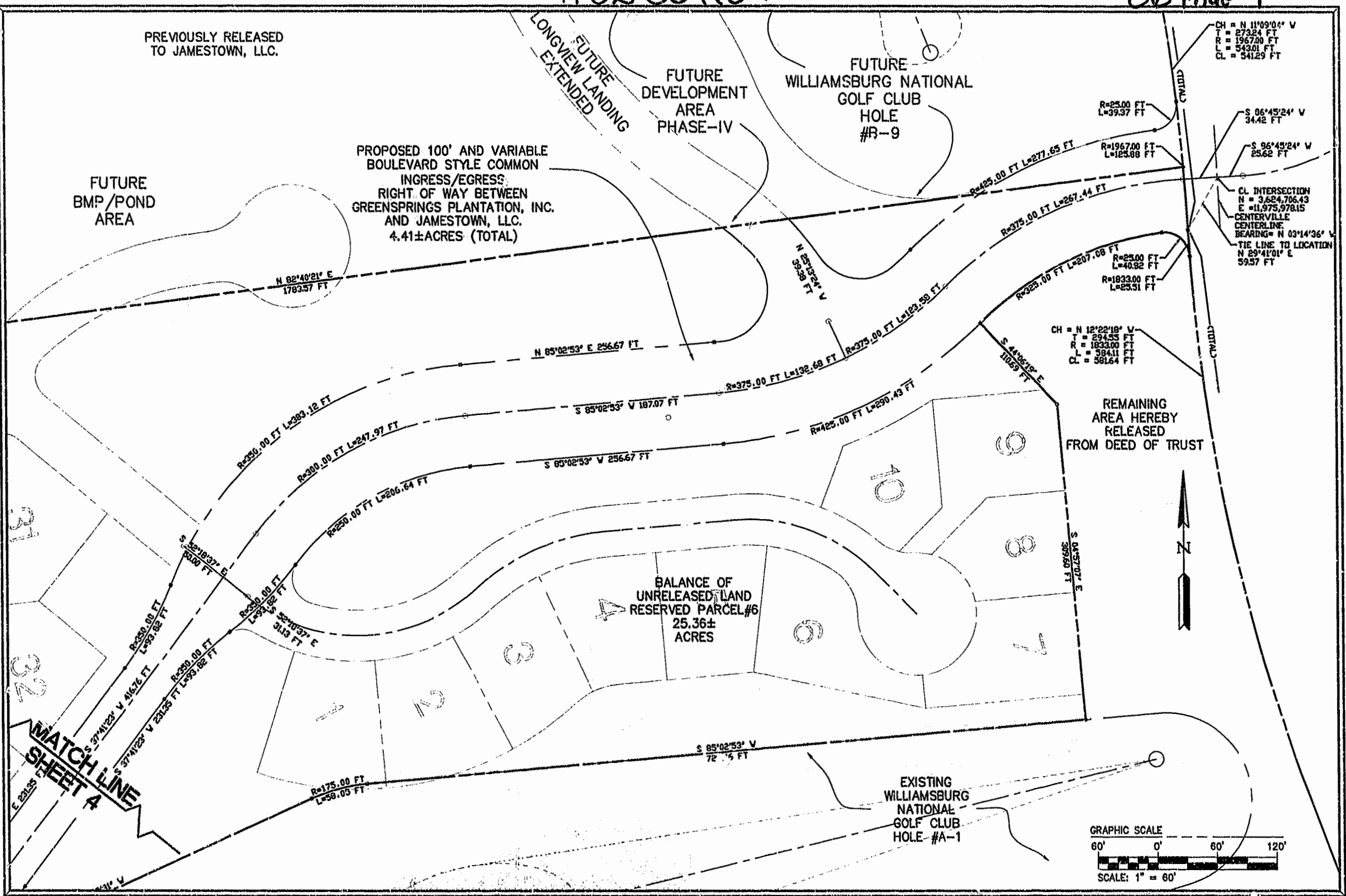
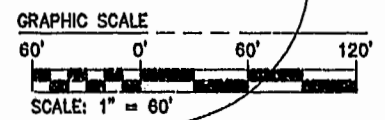
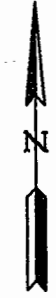
EXISTING WILLIAMSBURG NATIONAL GOLF CLUB HOLE #A-1

CH = N 11°09'06" V  
T = 273.24 FT  
R = 1967.00 FT  
L = 543.01 FT  
CL = 541.29 FT

S 86°45'24" V 34.42 FT  
S 86°45'24" W 25.62 FT

CL INTERSECTION  
N = 3,624,706.43  
E = 11,975,978.15  
CENTERVILLE CENTERLINE  
BEARING = N 03°14'36" V  
TIE LINE TO LOCATION  
N 29°41'01" E  
59.57 FT

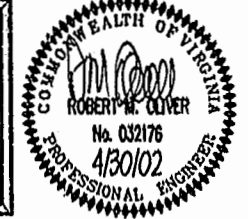
CH = N 12°22'18" V  
T = 294.55 FT  
R = 1833.00 FT  
L = 584.11 FT  
CL = 581.64 FT



*JMB*

**Jamestown**  
 MANAGEMENT COMPANY, LLC  
 DEVELOPMENT PLANNING, MANAGEMENT AND ENGINEERING  
 213 INGRAM ROAD WILLIAMSBURG, VIRGINIA 23188  
 (757) 220-0858 OFFICE (757) 220-0916 FAX

**GREENSPRINGS WEST**  
 DEED OF TRUST  
 RELEASE AND RESERVATION PLAT  
 FROM GREENSPRINGS PLANTATION  
 TO JAMESTOWN, LLC  
 BERKELEY DISTRICT JAMES CITY COUNTY VIRGINIA



NO.	REVISION	DATE
	City of Williamsburg & County of James City Circuit Court: This PLAT was recorded on 9 May 2002	
	at 4:02 AM, PB 86, PG 5-9	
	DOCUMENT # 220011077	
	BETSY B. WOOLRIDGE, CLERK	
	Mona Bauril, Dep. Clerk	

DESIGNED: CWG  
 DRAWN: CWG  
 SCALE: 1" = 60'  
 PROJECT NUMBER  
**1106-00**  
 DRAWING NUMBER  
**RP-3-05**