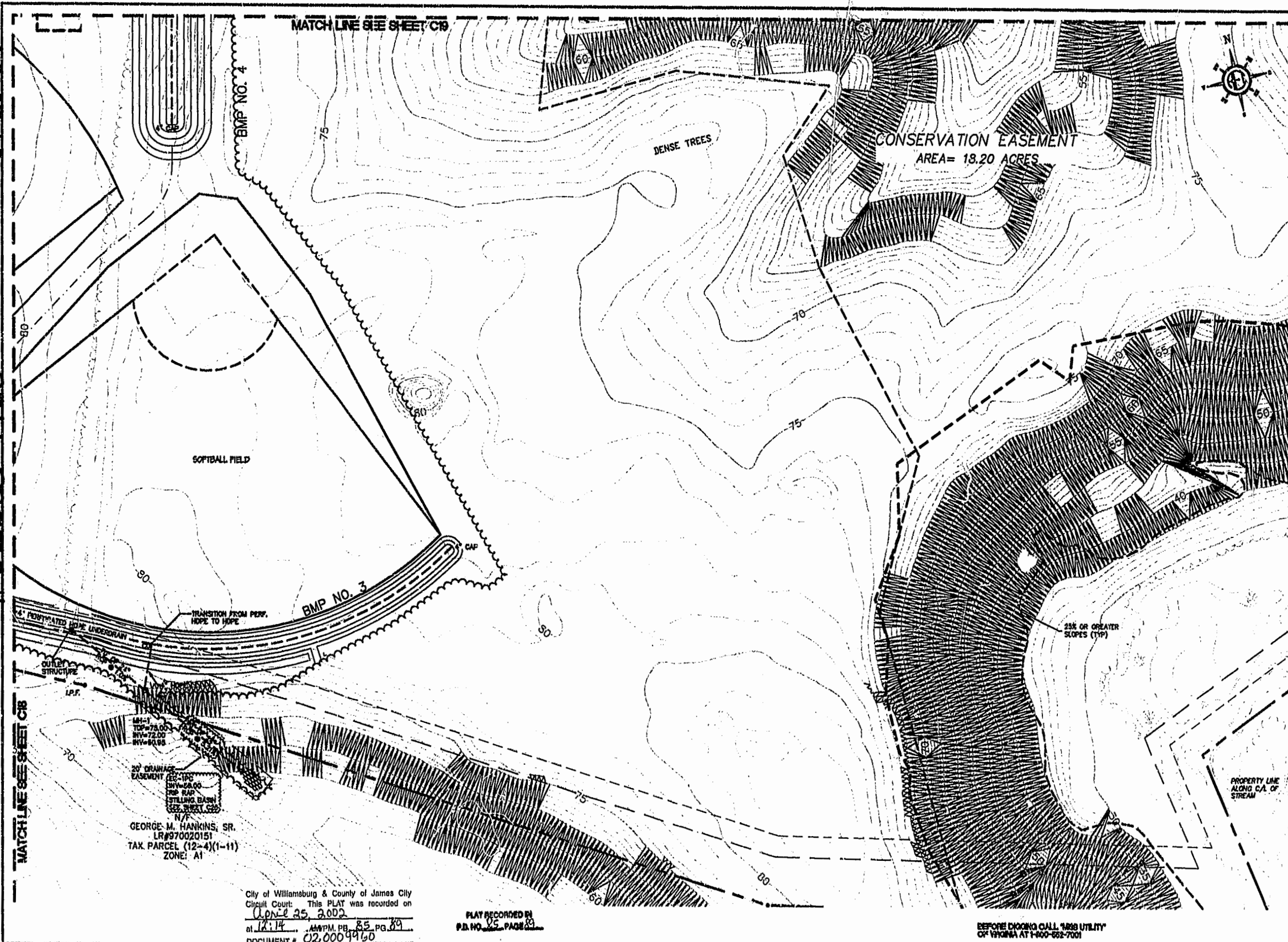


85 PAGE 89

#02,000 9960



MATCH LINE SEE SHEET C18

MATCH LINE SEE SHEET C19

MH-1
 TOP=78.00
 RIV=72.00
 RIV=69.88
 20' DRAINAGE
 EASEMENT
 12'-12" SW=24.00
 12" R/R
 STILLING BASIN
 SEE SHEET C20
 N/A
 GEORGE M. HANKINS, SR.
 LR#970020151
 TAX PARCEL (12-4)(1-11)
 ZONE: A1

City of Williamsburg & County of James City
 Circuit Court: This PLAT was recorded on
 April 25, 2002
 at 12:14 AM/PM, PG. 85, PG. 89
 DOCUMENT # 02,000 9960
 BEYSY B. WOOLRIDGE, CLERK
 Dawn R. Martin, Dep. Clerk

PLAT RECORDED IN P.D. NO. 85 PAGE 89

BEFORE DIGGING CALL 1-888-UTILITY OF VIRGINIA AT 1-800-662-7001

Rickmond Engineering, Inc.
 Engineering, Surveying, Land Planning
 1545 Lakeside Trl, Suite 200
 Williamsburg, VA 23185
 Phone: (540) 349-7776
 Fax: (540) 349-7731
 www.rickmond.com

Designed By: KAM
 Drawn By: KAM
 Scale: NTS
 Date: 10.24.01

NO.	REV.	REV. FOR COUNTY COMMENTS	DATE	BY
1	1	REV. FOR COUNTY COMMENTS	12/2/02	KAM
2	1	REV. FOR COUNTY COMMENTS	12/10/02	KAM
3	1	REV. FOR COUNTY COMMENTS	12/12/02	KAM

WILLIAMSBURG CHRISTIAN ACADEMY
 VIRGINIA
 UTILITY PLAN
 JAMES CITY COUNTY

Job Number: 01158
 Sheet No.: C20