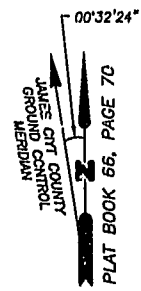


SECOND AMENDED PLAT OF SUBDIVISION  
WATERFORD  
AT  
POWHATAN SECONDARY  
PHASE SIXTEEN  
BERKELEY DISTRICT  
JAMES CITY COUNTY, VIRGINIA

DATE: 10/21/98 SHEET 2 OF 3 SCALE: 1"=100'  
PROJECT NO: 97-008 DRAWN BY: SJB

**SA** SLEDD & ASSOCIATES, P.C.  
ENGINEERS PLANNERS SURVEYORS  
11832 ROCK LANDING DRIVE, SUITE 203  
NEWPORT NEWS, VIRGINIA 23606  
(757) 873-3386

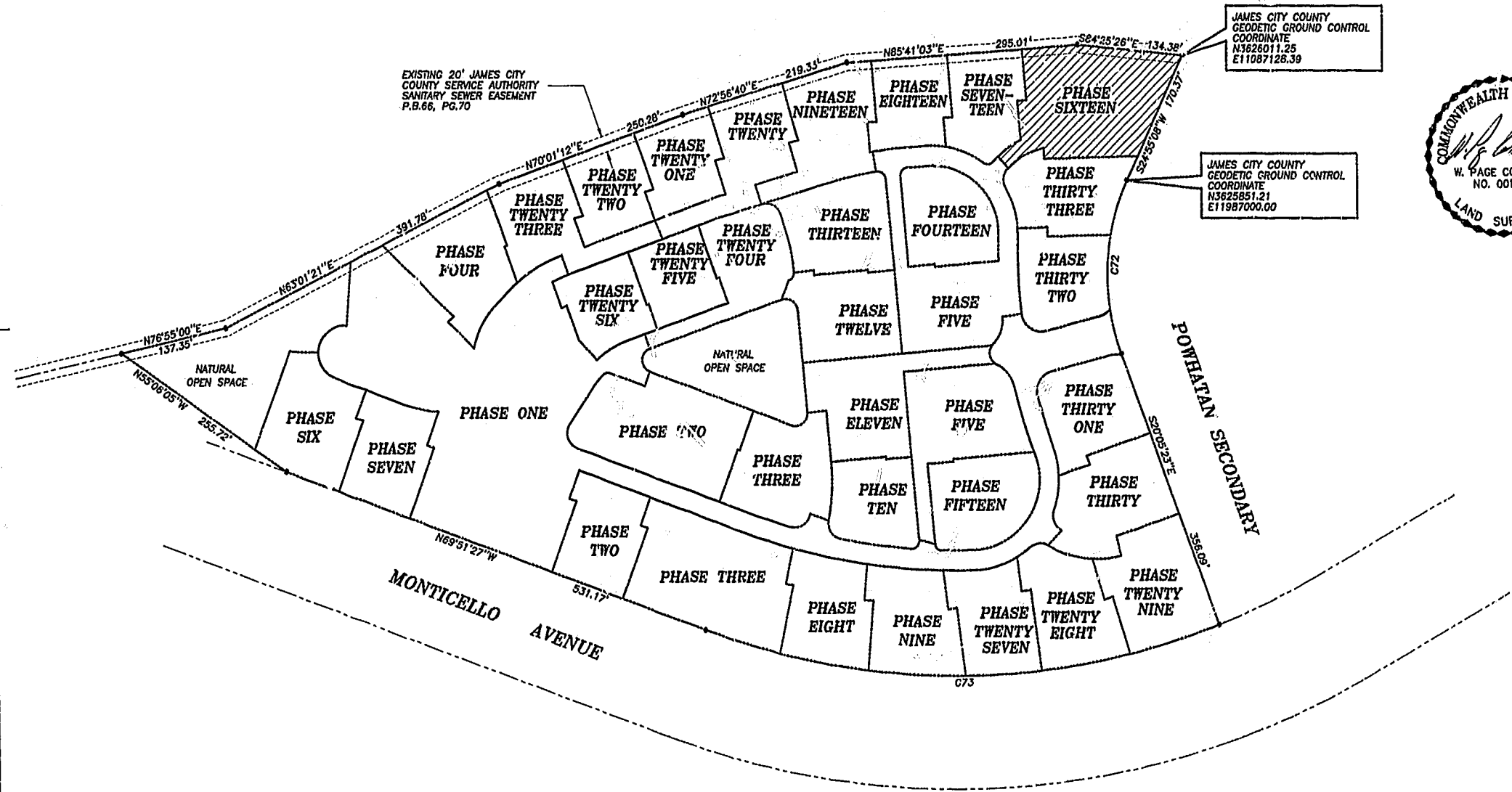
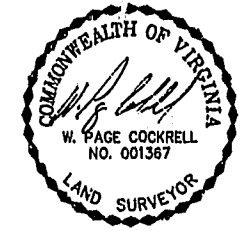


NOW OR FORMERLY  
POWHATAN ENTERPRISES, INC.

EXISTING 20' JAMES CITY  
COUNTY SERVICE AUTHORITY  
SANITARY SEWER EASEMENT  
P.B.66, PG.70

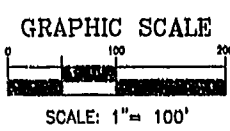
JAMES CITY COUNTY  
GEODETIC GROUND CONTROL  
COORDINATE  
N3626011.25  
E11087128.39

JAMES CITY COUNTY  
GEODETIC GROUND CONTROL  
COORDINATE  
N3625851.21  
E11987000.00



CURVE DATA

NUMBER	DELTA	RADIUS	LENGTH	TANGENT	CHORD	CHORD BEARING
C72	45°00'31"	280.00'	219.95'	116.00'	214.34'	S02°24'52"W
C73	41°26'14"	924.91'	668.91'	349.84'	654.43'	S89°25'26"W



City of Williamsburg & County of James City  
Circuit Court: This PLAT was recorded on  
April 23, 2002  
at 10:10 AM, P.B. 85, PG. 78-80  
DOCUMENT # 020007900  
BETSY B. WOOLRIDGE, CLERK  
Mona Bausell, Dep. Clerk