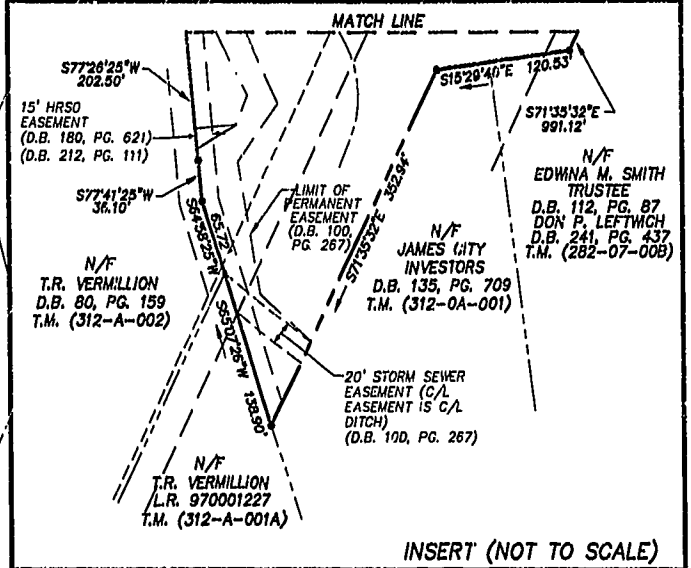
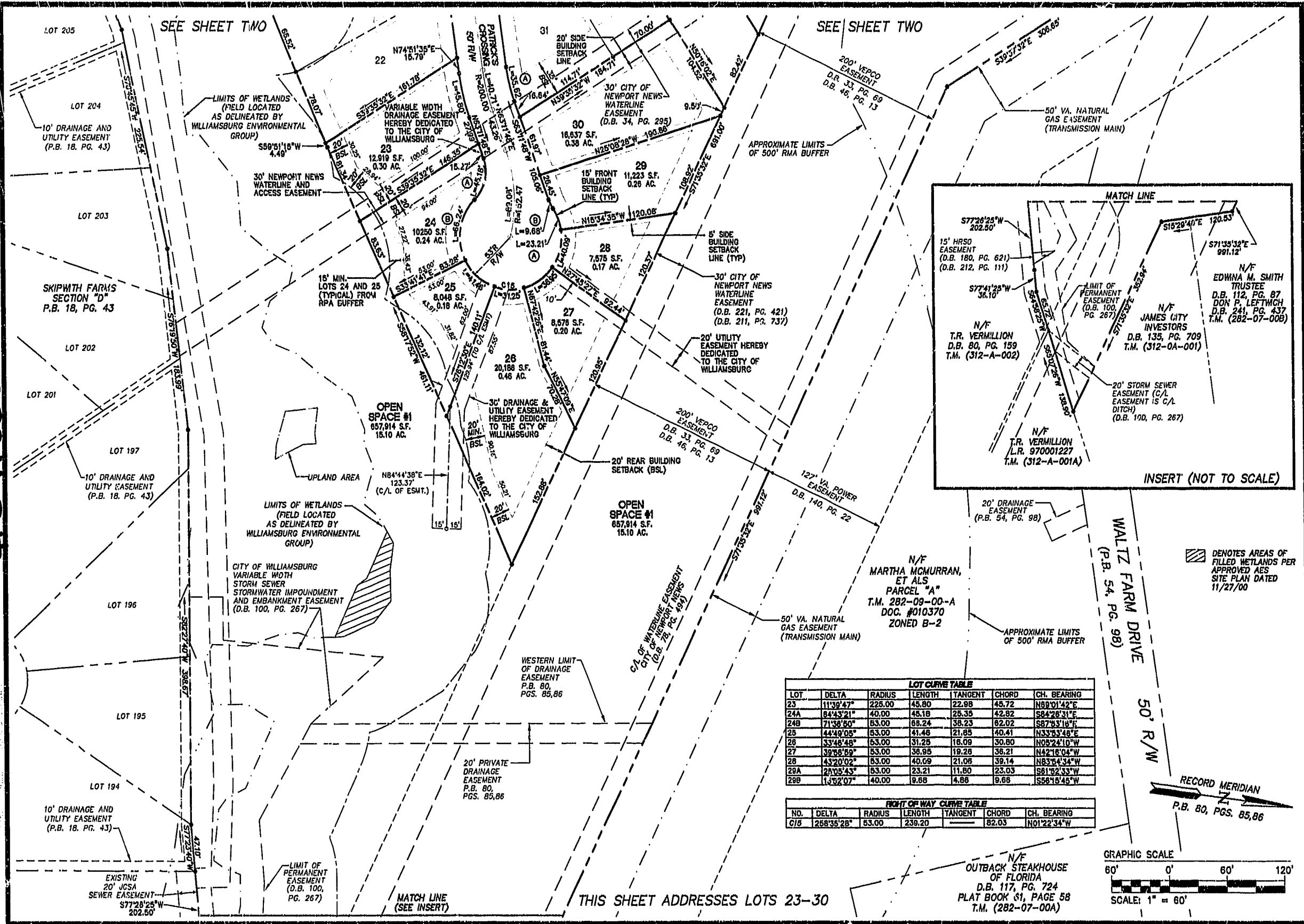


84 PAGE 15
#01808



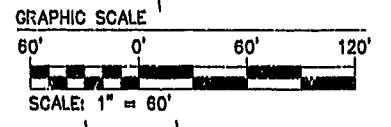
⊠ DENOTES AREAS OF FILLED WETLANDS PER APPROVED AES SITE PLAN DATED 11/27/00

LOT CURVE TABLE

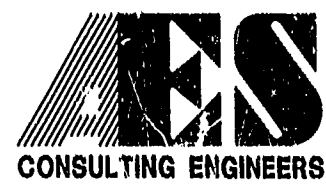
LOT	DELTA	RADIUS	LENGTH	TANGENT	CHORD	CH. BEARING
23	113°47'	225.00	45.80	22.88	45.72	N88°01'42"E
24A	84°43'21"	40.00	45.18	25.35	42.82	S84°28'31"E
24B	71°38'50"	53.00	88.24	38.23	82.02	S87°53'18"E
25	44°48'05"	53.00	41.48	21.85	40.41	N33°53'48"E
26	33°48'48"	53.00	31.25	16.09	30.80	N05°24'10"W
27	39°58'59"	53.00	38.95	19.28	36.21	N42°18'04"W
28	43°20'02"	53.00	40.09	21.08	39.14	N83°54'34"W
28A	25°05'43"	53.00	23.21	11.80	23.03	S81°52'33"W
28B	13°32'07"	40.00	9.68	4.88	9.68	S56°18'45"W

RIGHT OF WAY CURVE TABLE

NO.	DELTA	RADIUS	LENGTH	TANGENT	CHORD	CH. BEARING
C1B	258°35'28"	53.00	239.20	—	82.03	N01°22'34"W



THIS SHEET ADDRESSES LOTS 23-30



5248 Olde Towne Road, Suite 1
Williamsburg, Virginia 23188
(757) 253-0040
Fax (757) 220-8994

PLAT OF SUBDIVISION
SAVANNAH GREEN
OWNED BY: RAUCH DEVELOPMENT COMPANY, L.L.C.
CITY OF WILLIAMSBURG VIRGINIA



City of Williamsburg & County of James City
Circuit Court: This PLAT was recorded on
November 21, 2001
at *10:57 AM* AM/PM P.M. PG. 13-25
DOCUMENT # *1183*
BETSY B. WOOLRIDGE, CLERK
Betsy B. Woolridge Clerk
NO. DATE REVISION / COMMENT / NOTE BY

Designed HWP	Drawn JFS
Scale 1"=60'	Date 10/15/01
Project No. 8958	
Drawing No. 3 OF 3	