

**LOT CURVE TABLE**

LOT	DELTA	RADIUS	LENGTH	TANGENT	CHORD	CH. BEARING
3	8°23'28"	225.00	21.17	10.59	21.16	S00°34'41"W
4	17°33'58"	225.00	68.98	34.78	68.71	S10°54'00"E
5A	9°44'39"	225.00	38.27	19.18	38.22	S24°33'18"E
5B	84°27'16"	25.00	28.12	15.78	28.66	S02°47'59"W
6	35°12'18"	125.00	78.80	39.66	75.60	S07°28'28"W
7A	13°45'01"	125.00	30.00	15.07	29.93	S07°30'08"E
7B	8°28'38"	475.00	45.13	22.58	45.11	S11°12'20"E
8	10°18'52"	475.00	85.85	42.94	85.63	S03°19'08"E
9	8°38'13"	475.00	71.60	35.87	71.53	S08°09'57"W
10	8°37'47"	475.00	71.54	35.84	71.48	S14°47'57"W

**LOT CURVE TABLE (CONTINUED)**

LOT	DELTA	RADIUS	LENGTH	TANGENT	CHORD	CH. BEARING
11	3°50'54"	470.00	31.80	15.98	31.80	S21°02'18"W
12	11°21'27"	55.00	10.90	5.47	10.88	S17°17'01"W
13	40°11'27"	65.00	36.58	20.12	37.79	S08°20'25"E
14	42°48'02"	55.00	41.10	21.59	40.15	S48°59'40"E
15	42°48'02"	55.00	41.10	21.58	40.15	N87°11'18"E
16	42°48'02"	55.00	41.10	21.58	40.15	N44°22'16"E
17	12°47'57"	325.00	72.60	36.45	72.45	N28°21'43"E
18	3°53'14"	325.00	22.05	11.03	22.05	N37°42'18"E
19	18°18'17"	275.00	73.22	36.83	73.00	N47°18'30"E
20	18°18'17"	275.00	73.22	36.83	73.00	N82°31'52"E
21	1°12'04"	275.00	22.56	11.29	22.56	N72°30'33"E
31A	1°30'47"	175.00	35.62	17.87	35.58	S88°01'42"W

**LOT CURVE TABLE (CONTINUED)**

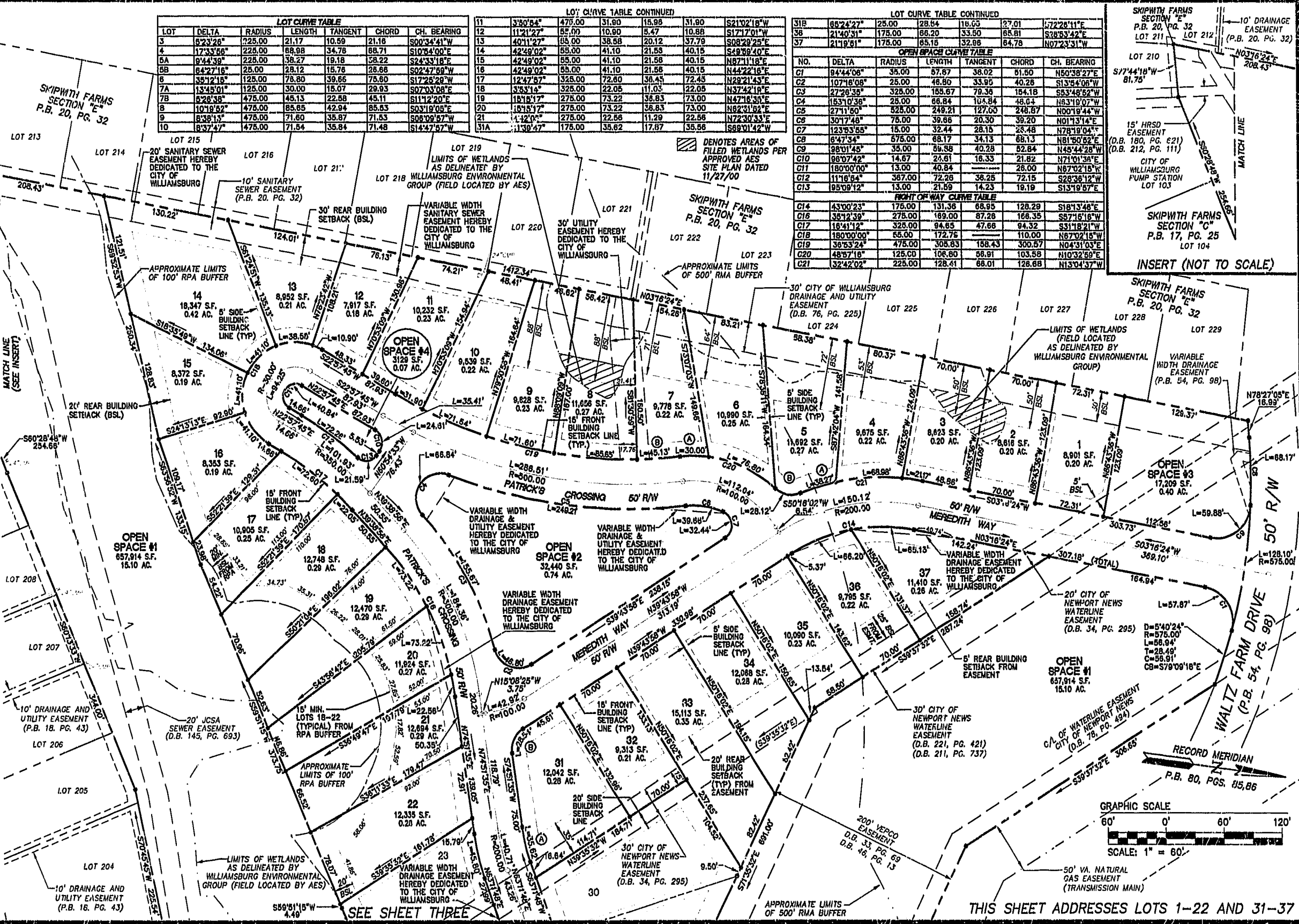
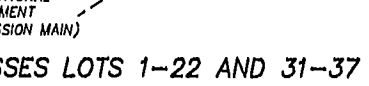
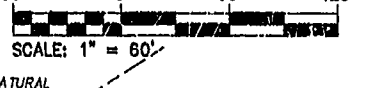
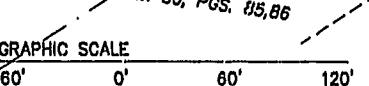
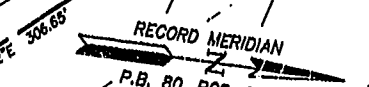
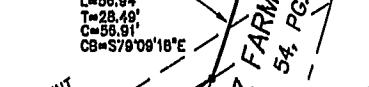
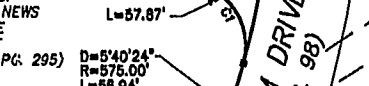
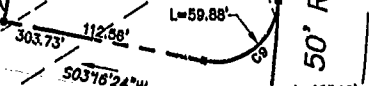
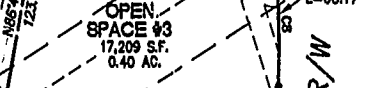
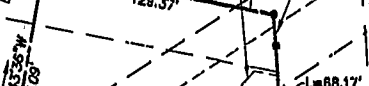
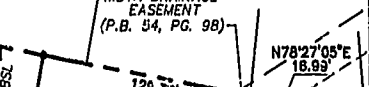
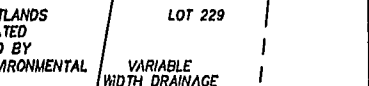
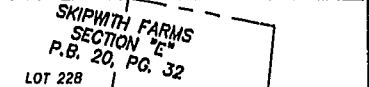
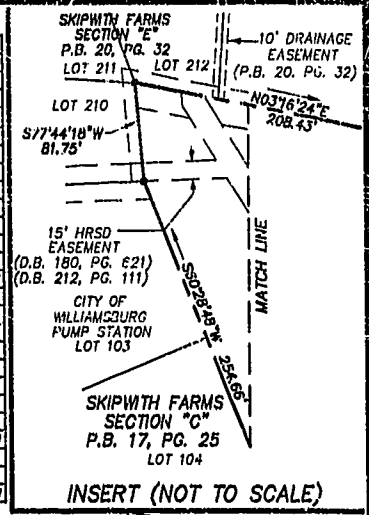
LOT	DELTA	RADIUS	LENGTH	TANGENT	CHORD	CH. BEARING
31B	85°24'27"	25.00	28.54	18.03	27.01	S72°28'11"E
36	21°40'31"	175.00	66.20	33.50	65.81	S28°53'42"E
37	21°19'51"	175.00	65.16	32.86	64.78	N07°23'31"W

**OPEN SPACE CURVE TABLE**

NO.	DELTA	RADIUS	LENGTH	TANGENT	CHORD	CH. BEARING
G1	94°44'08"	35.00	57.57	38.02	61.50	N50°38'27"E
G2	107°18'08"	25.00	48.86	33.95	40.28	S13°44'08"W
G3	27°28'38"	325.00	155.67	79.36	154.18	S53°48'52"W
G4	153°10'38"	25.00	66.84	104.84	48.04	N83°19'07"W
G5	27°11'50"	525.00	249.21	127.00	248.87	N00°18'44"W
G6	30°17'48"	75.00	39.86	20.30	39.20	N01°13'14"E
G7	123°53'55"	15.00	32.44	28.16	28.48	N78°19'04"E
G8	84°7'34"	575.00	68.17	34.13	68.13	N81°50'52"E
G9	38°01'45"	35.00	39.58	40.28	52.64	N45°44'28"W
G10	98°07'42"	14.67	24.81	16.33	21.82	N71°01'38"E
G11	180°00'00"	13.00	40.84	-----	28.00	N87°02'18"W
G12	11°16'54"	387.00	72.28	36.25	72.15	S28°38'12"W
G13	95°09'12"	13.00	21.59	14.23	19.19	S13°19'57"E

**FRONT OF WAY CURVE TABLE**

LOT	DELTA	RADIUS	LENGTH	TANGENT	CHORD	CH. BEARING
C14	43°00'23"	175.00	131.38	68.95	128.29	S18°13'48"E
C16	35°12'39"	275.00	189.00	87.28	188.35	S57°16'18"W
C17	16°41'12"	325.00	94.65	47.68	94.32	S31°18'21"W
C18	180°00'00"	55.00	172.75	-----	110.00	N87°02'18"W
C19	39°53'24"	475.00	308.53	158.43	300.57	N04°31'03"E
C20	48°57'18"	125.00	106.80	56.91	103.59	N10°32'59"E
C21	32°42'02"	225.00	128.61	68.01	126.68	N13°04'37"W



**CONSULTING ENGINEERS**

2548 Olde Towne Road, Suite 1  
Williamsburg, Virginia 23188  
(757) 253-0040  
Fax (757) 220-8994

PLAT OF SUBDIVISION  
**SAVANNAH GREEN**  
OWNED BY: RAUCH DEVELOPMENT COMPANY, L.L.C.  
CITY OF WILLIAMSBURG VIRGINIA

191574  
G.T. WILSON, JR.  
CERTIFICATE NO. 1183  
CREATED LAND SURVEY

City of Williamsburg & County of James City  
Circuit Court. This PLAT was recorded on  
170 October 21, 2007  
at 10:58 AM PM, PG. 13-15  
DOCUMENT # 011808  
BETSY B. WOOLRIDGE, CLERK  
City of Williamsburg Clerk

NO.	DATE	REVISION / COMMENT / NOTE	BY

Designed	Drawn
HWP	JFS
Scale	Date
1"=60'	10/15/01
Project No.	8958
Drawing No.	2 OF 3