

INST# 011596

83 PAGE 61

NOW OR FORMERLY  
COLLEGE OF WILLIAM & MARY

IRON BOUND

(APPROX. R/W)



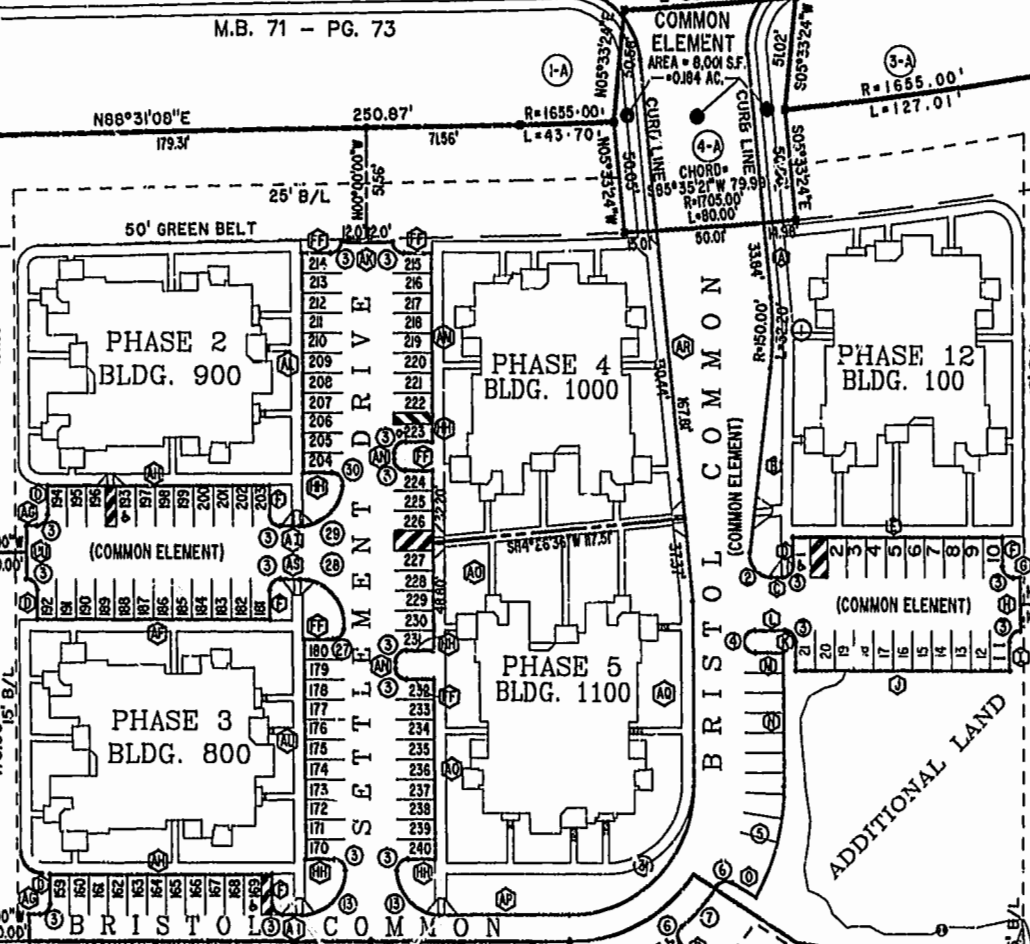
T.P. 372-(0A)-00-028  
NOW OR FORMERLY  
JEROME & EVELYN RANDOLPH  
(D.B. 30, PG. 470)  
ZONE: RM-2

T.P. 372-(0A)-00-030  
NOW OR FORMERLY  
JEROME & EVELYN RANDOLPH  
(D.B. 37, PG. 379)  
ZONE: RM-2

T.P. 372-(05)-00-061  
NOW OR FORMERLY  
CHESAPEAKE MEDIA, INC.  
(D.B. 74, PG. 121)  
(M.B. 42, PG. 25)  
ZONE: B-2 CONDITIONAL

MATCH LINE  
SEE SHEET 3  
40' R/W  
ROLAND STREET

MATCH LINE  
SEE SHEET 3



PHASE 6  
SEE SHEET 3

PHASE 10  
SEE SHEET 3



City of Williamsburg & County of James City  
Circuit Court: This PLAT was recorded on  
19 Oct 2001  
at 12:18 PM, PB 83, PG. 67-63  
DOCUMENT # 011596  
BETSY B. WOOLRIDGE, CLERK  
*Betsy Woolridge* Dep. Clerk

Hassell & Folkes, P.C. Engineers Surveyors Planners Chesapeake, VA 23320 (757) 547-9531	SIZE C	CONTRACT NO 98062	DISK/BOX 123L/15	FILENAME BRISTOL10.DWG	REV.
	SCALE: 1"=50'	DATE: 09/20/01	SHEET 2 of 4		

BRISTOL COMMONS  
A CONDOMINIUM COMMUNITY  
PHASE TEN  
FOR  
KEY GROUP, LLC  
CITY OF WILLIAMSBURG, VIRGINIA