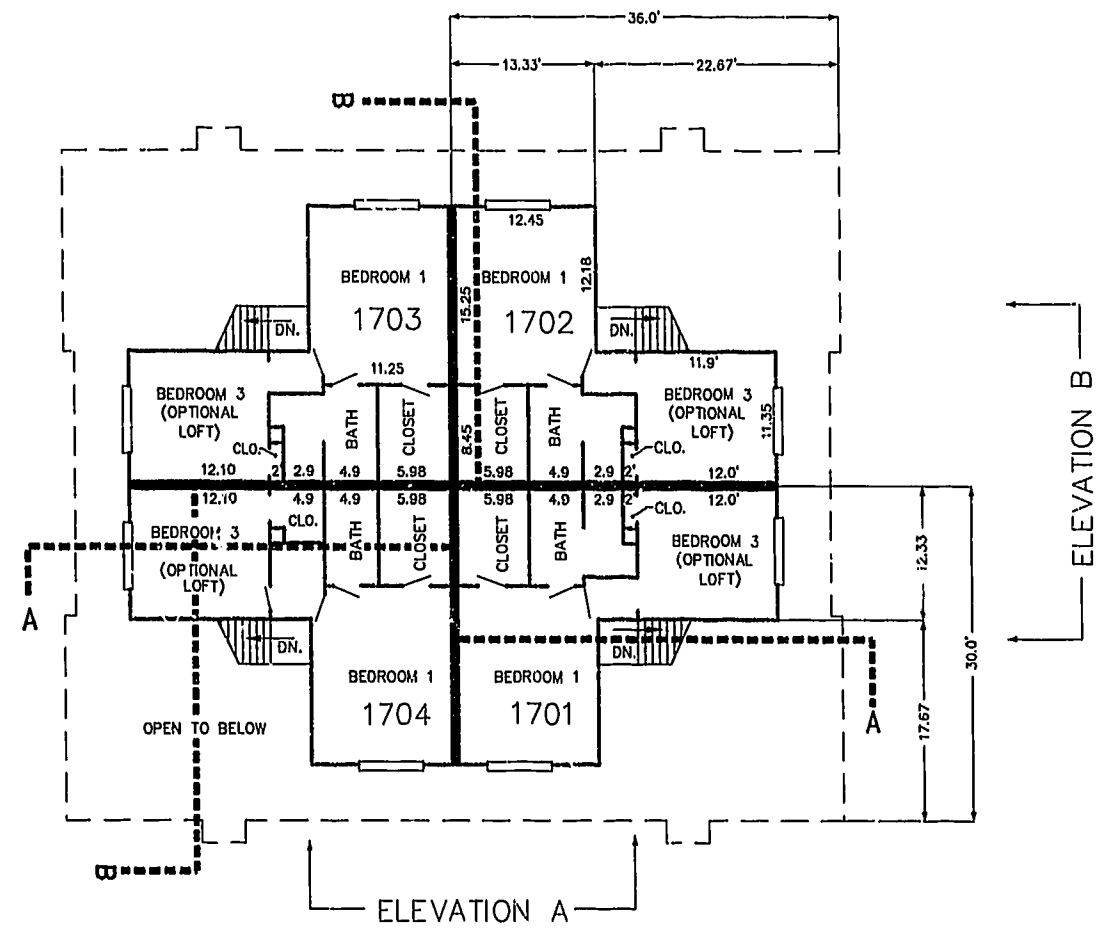
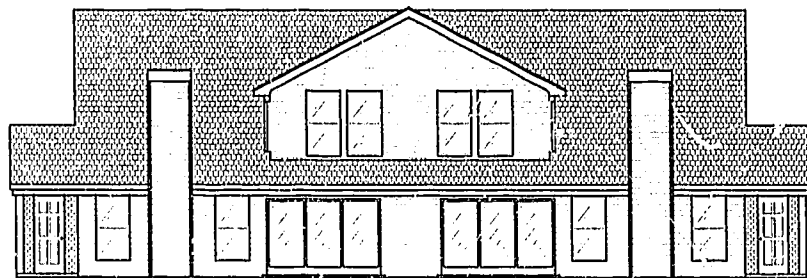


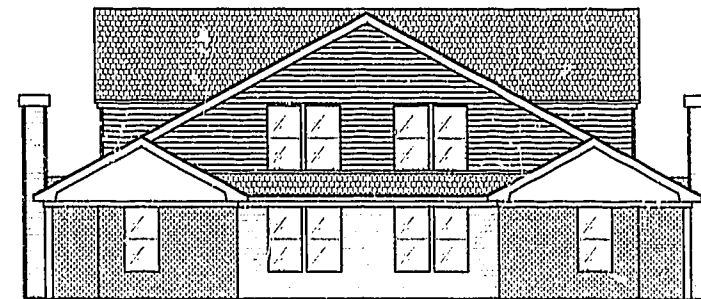
FIRST FLOOR PLAN
(UNIT #1702 IS TYPICAL)



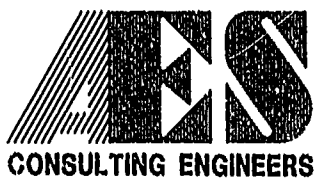
SECOND FLOOR PLAN
(UNIT #1702 IS TYPICAL)



ELEVATION A

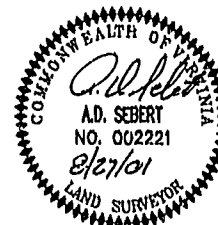


ELEVATION B



5248 Olde Towne Road, Suite 1
Williamsburg, Virginia 23188
(757) 253-0040
Fax (757) 220-8994

PLAT OF CONDOMINIUM
WESTGATE AT WILLIAMSBURG,
A CONDOMINIUM
PHASE EIGHTEEN
OWNED BY: 752 L.L.C.,
A VIRGINIA LIMITED LIABILITY COMPANY
CITY OF WILLIAMSBURG VIRGINIA



No.	DATE	REVISION / COMMENT / NOTE	BY

Designed JTW/ADS	Drawn JFS
Scale 1" = 10'	Date 8/27/01
Project No. 8395-6	
Drawing No. 5 OF 6	

City of Williamsburg & County of James City
Circuit Court: This PLAT was recorded on
13 Oct 2001
at 12:14 PM, PB 83 PG 25-30
DOCUMENT # 011395
BETSY B. WOOLRIDGE, CLERK
Betsy B. Woolridge, Rep. Clerk