

NOW OR FORMERLY  
**COLLEGE OF WILLIAM & MARY**  
**IRONBOUND ROAD**



M.B. 71 - PG. 73

T.P. 372-(0A)-00-028  
NOW OR FORMERLY  
**JEROME & EVELYN RANDOLPH**  
(D.B. 30, PG. 470)  
ZONE: RM-2

T.P. 372-(0A)-00-030  
NOW OR FORMERLY  
**JEROME & EVELYN RANDOLPH**  
(D.B. 37, PG. 379)  
ZONE: RM-2

T.P. 372-(05)-00-001  
NOW OR FORMERLY  
**CHESAPEAKE MEDIA, INC.**  
(D.B. 74, PG. 121)  
(M.B. 42, PG. 25)  
ZONE: B-2 CONDITIONAL

**MATCH LINE**  
SEE SHEET 3

40' R/W  
**ROLAND STREET**

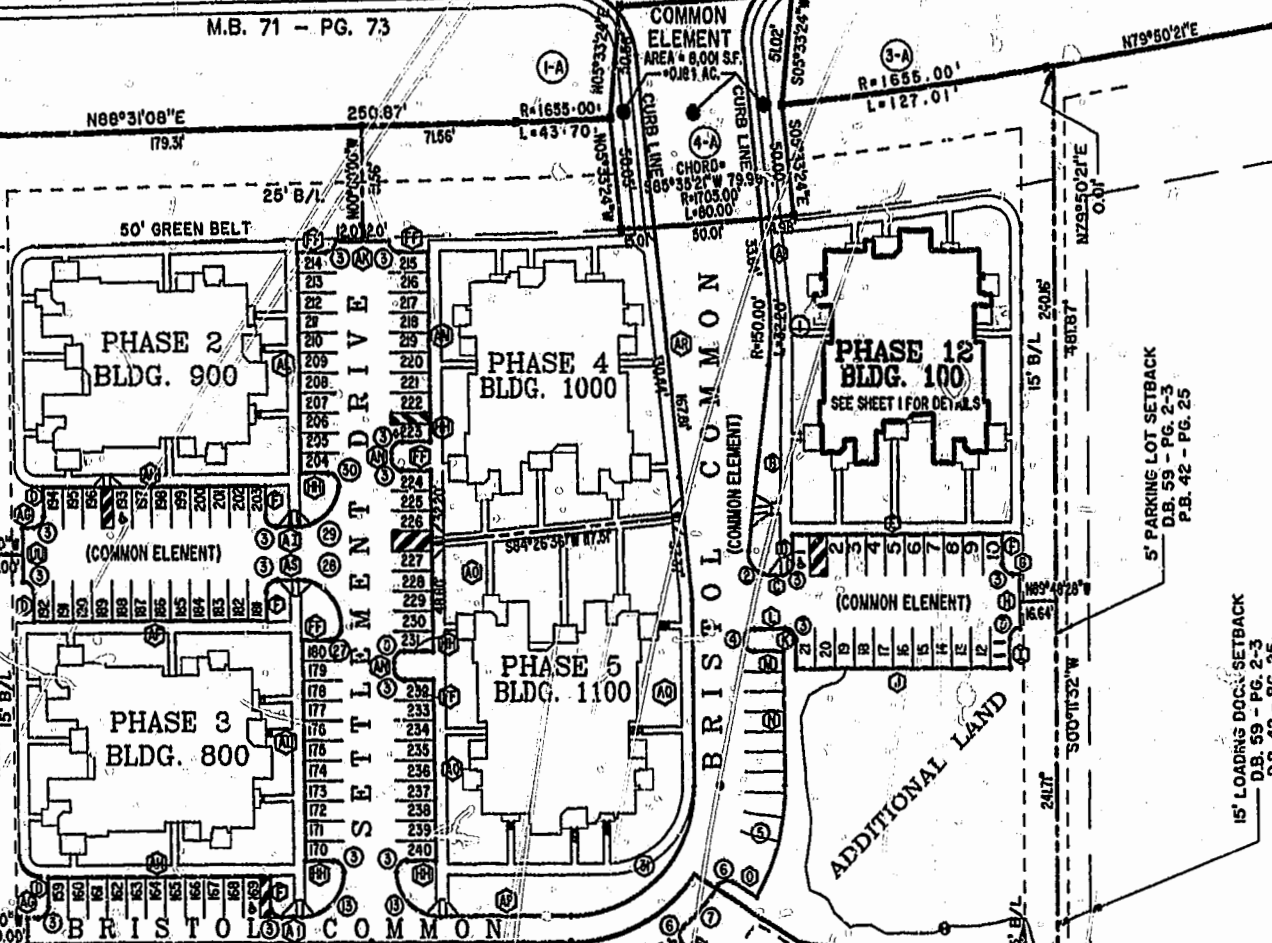
**MATCH LINE**  
SEE SHEET 3

**PHASE 6**  
SEE SHEET 3

**ADDITIONAL LAND**

**RECREATION AREA**

**PEDESTRIAN BD'WK.**



City of Williamsburg & County of James City  
Circuit Court: This PLAT was recorded on  
11 Oct. 2001  
at 12:43 PM, PG. 21-24  
DOCUMENT # 011386  
BETSY B. WOOLRIDGE, CLERK  
*Betsy Woolridge* Dep. Clerk

**BRISTOL COMMONS**  
**A CONDOMINIUM COMMUNITY**  
FOR  
**KEY GROUP, LLC**  
CITY OF WILLIAMSBURG, VIRGINIA

Hassell & Folkes, P.C. Engineers Surveyors Planners Chesapeake, VA 23320 (757)547-9531	SIZE	CONTRACT NO	DISK/BOX	FILENAME	REV.
	C	98042	123J/15	BRISTOL12.DWG	
SCALE: 1"=50'		DATE: 08/20/01	SHEET 2 of 4		