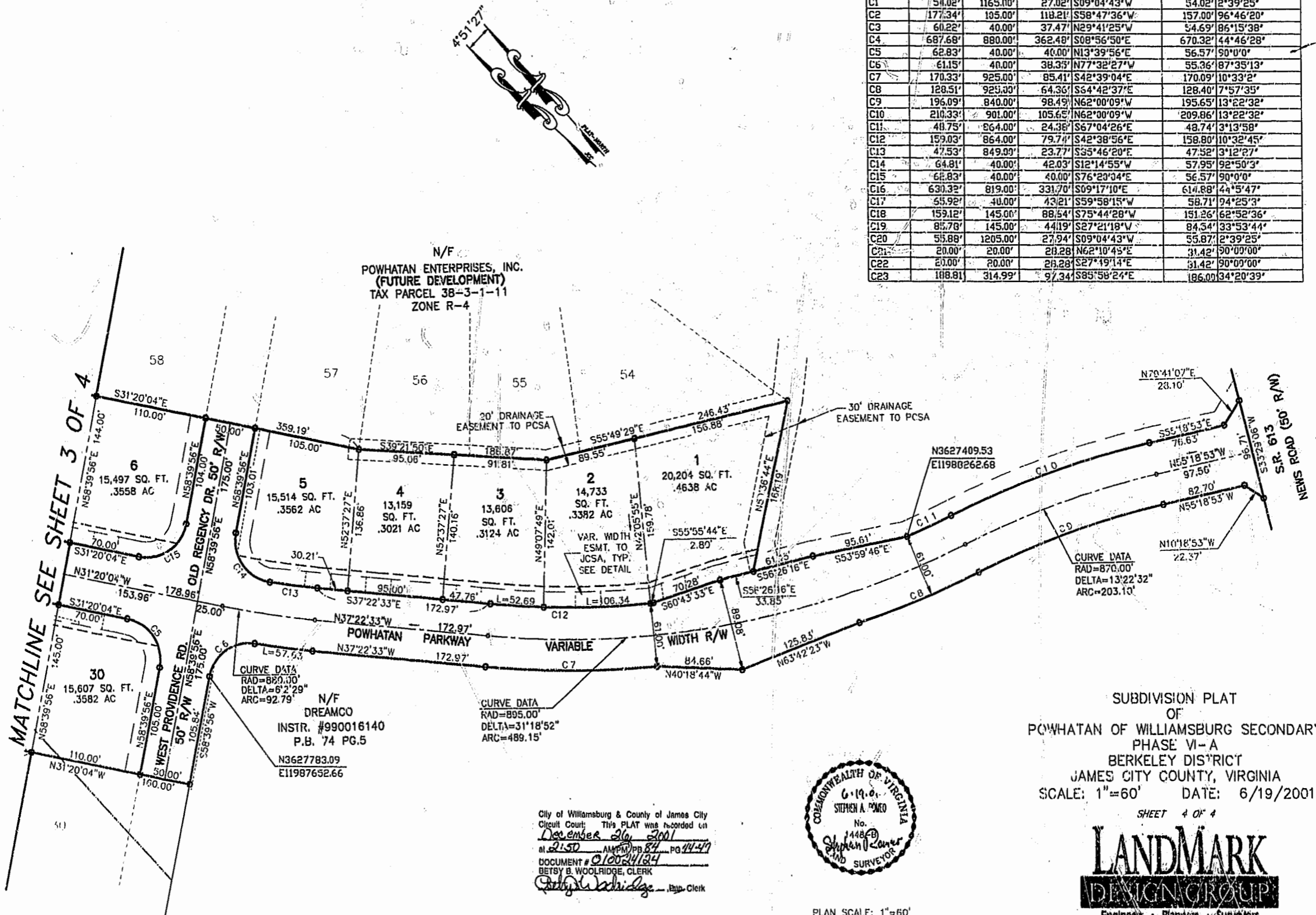
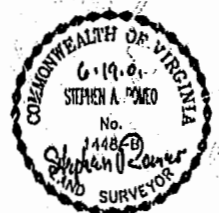


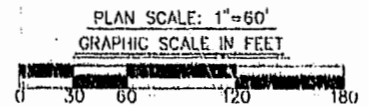
CURVE TABLE						
CURVE	LENGTH	RADIUS	TANGENT	CHORD BEARING	CHORD	DELTA
C1	54.02'	1165.00'	27.02'	S09°04'43"W	54.02'	2°39'25"
C2	177.34'	185.00'	118.21'	S58°47'36"W	157.00'	96°46'20"
C3	60.22'	40.00'	37.47'	N29°41'25"W	54.69'	86°15'38"
C4	687.68'	880.00'	362.48'	S08°56'50"E	670.32'	44°46'28"
C5	62.83'	40.00'	40.00'	N13°39'56"E	56.57'	90°0'0"
C6	61.15'	40.00'	38.33'	N77°32'27"W	55.36'	87°35'13"
C7	170.33'	925.00'	85.41'	S42°39'04"E	170.09'	10°33'2"
C8	128.51'	925.00'	64.36'	S64°42'37"E	128.40'	7°57'35"
C9	196.09'	840.00'	98.49'	N62°00'09"W	195.65'	13°22'32"
C10	210.33'	901.00'	105.65'	N62°00'09"W	209.86'	13°22'32"
C11	40.75'	864.00'	24.38'	S67°04'26"E	48.74'	3°13'58"
C12	159.03'	864.00'	79.74'	S42°38'56"E	158.80'	10°32'45"
C13	47.53'	849.09'	23.77'	S55°46'20"E	47.52'	3°12'27"
C14	64.81'	40.00'	42.03'	S12°14'55"W	57.95'	92°50'3"
C15	62.83'	40.00'	40.00'	S76°23'04"E	56.57'	90°0'0"
C16	630.32'	819.00'	331.70'	S09°17'10"E	614.88'	44°5'47"
C17	55.92'	40.00'	43.21'	S59°58'15"W	58.71'	74°25'3"
C18	159.12'	145.00'	88.54'	S75°44'28"W	151.26'	62°52'36"
C19	85.78'	145.00'	44.19'	S27°21'18"W	84.54'	33°53'44"
C20	55.88'	1205.00'	27.94'	S09°04'43"W	55.87'	2°39'25"
C21	20.00'	20.00'	20.28'	N62°10'45"E	31.42'	90°00'00"
C22	20.00'	20.00'	20.28'	S27°19'14"E	31.42'	90°00'00"
C23	108.81'	314.99'	97.34'	S85°58'24"E	106.00'	34°20'39"



SUBDIVISION PLAT
OF
POWHATAN OF WILLIAMSBURG SECONDARY
PHASE VI-A
BERKELEY DISTRICT
JAMES CITY COUNTY, VIRGINIA
SCALE: 1"=60' DATE: 6/19/2001



City of Williamsburg & County of James City
Circuit Court: This PLAT was recorded on
December 26, 2001
at 2:50 AM PM, PG 84 PG 47
DOCUMENT # 010024124
BETSY B. WOOLRIDGE, CLERK
Betsy Woolridge, Dep. Clerk



SHEET 4 OF 4
LANDMARK
DESIGN GROUP
Engineers • Planners • Surveyors
Landscape Architects • Environmental Consultants

4029 IRONBOUND ROAD, SUITE 100
WILLIAMSBURG, VA 23188
TEL (757) 253-2976 FAX (757) 228-0048

DRAWN BY: LFV PROJ. NO.: 1780041-001.40
CHKD. BY: SAR DWG. NO.: 12015W