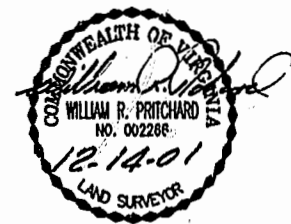
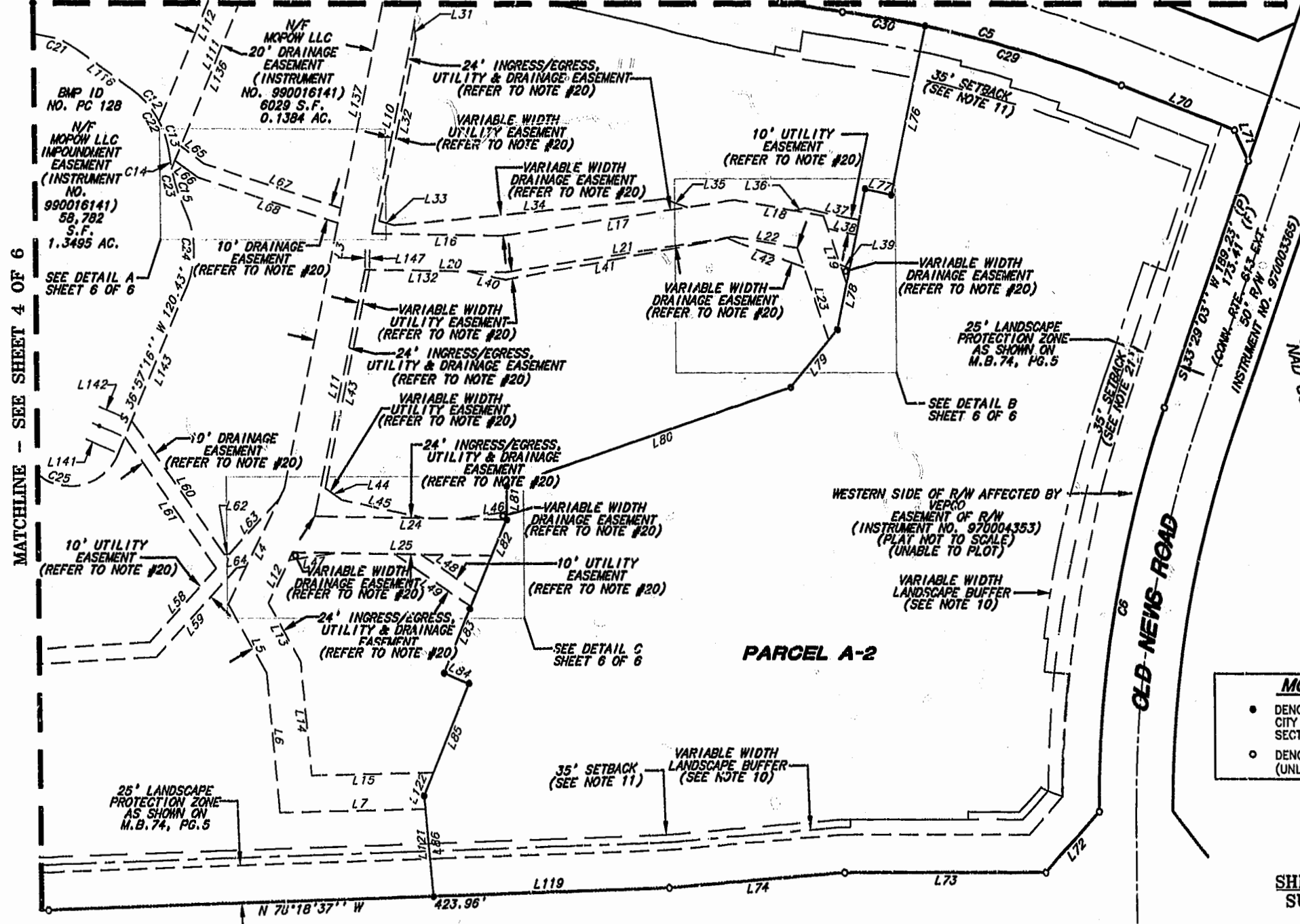


MATCHLINE - SEE SHEET 5 OF 6

W.P. LARGE, INC.  
**WPL**  
 SURVEYING-ENGINEERING  
 PLANNING  
 244 MURKIN TRAIL  
 SUITE B  
 VIRGINIA BEACH, VIRGINIA  
 (804) 431-1041  
 (804) 465-1418 FAX.



- MONUMENT LEGEND**
- DENOTES MONUMENT SET PER JAMES CITY COUNTY SUBDIVISION ORDINANCE SECTION 10-34 TO 19-36
  - DENOTES OLD PIN FOUND (UNLESS NOTED OTHERWISE)

SHEET 3 OF 6  
SUBDIVISION

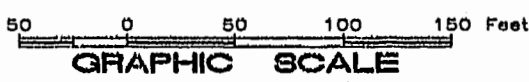
OF  
**MONTICELLO AT POWHATAN APARTMENTS**  
**PARCEL A**  
**AREA DESIGNATION D**  
**21.7638 ACRES TOTAL**

AS SHOWN ON  
 SUBDIVISION PLAT  
 APARTMENT PARCEL NORTH SIDE OF NEWS ROAD  
 POWHATAN OF WILLIAMSBURG SECONDARY  
 BERKELEY DISTRICT - JAMES CITY COUNTY, VA.  
 PLAT RECORDED IN M.B. 74, PG. 6, IN THE CLERK'S OFFICE OF  
 THE CIRCUIT COURT, OF JAMES CITY COUNTY, VIRGINIA

SCALE 1"=60' DATE: DECEMBER 13, 2001

SEE SHEET 1 OF 6 FOR NOTES AND CERTIFICATIONS

SEE SHEET 6 OF 6 FOR LINE TABLE AND CURVE TABLE



City of Williamsburg & County of James City Circuit Court: This PLAT was recorded on  
 December 31, 2001  
 at 2:15 P.M., PG. 32 of 42  
 DOCUMENT # 010024015  
 BETSY B. WOOLRIDGE, CLERK  
*Betsy Woolridge* Clerk