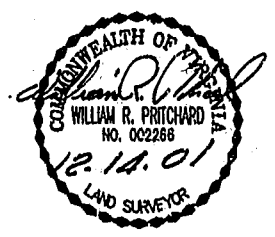
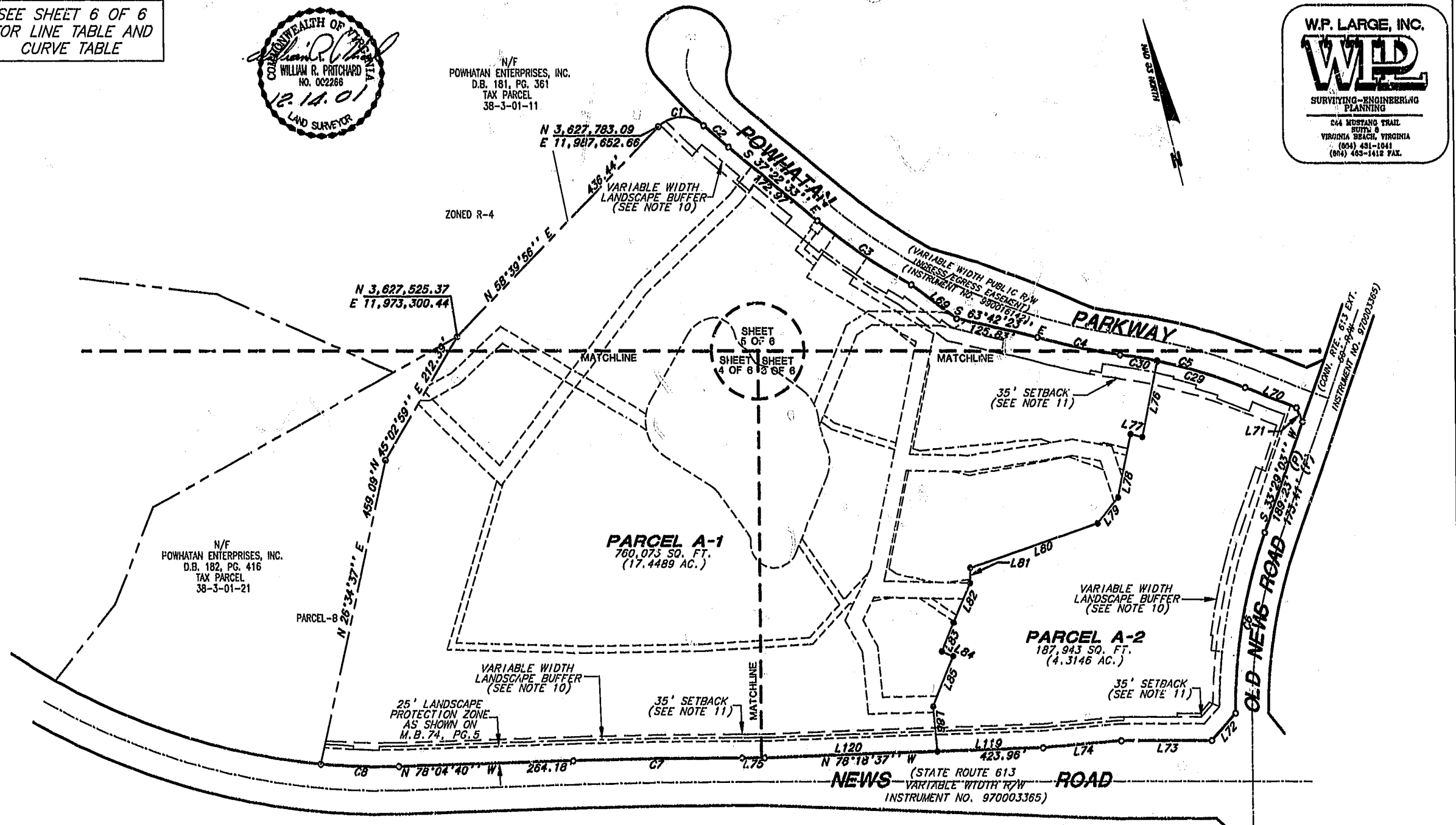


SEE SHEET 6 OF 6 FOR LINE TABLE AND CURVE TABLE



N/F POWHATAN ENTERPRISES, INC. D.B. 181, PG. 361 TAX PARCEL 38-3-01-11

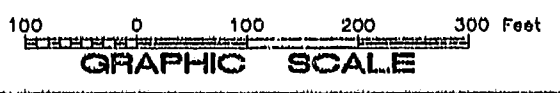
W.P. LARGE, INC. WPL SURVIVING-ENGINEERING PLANNING 604 MUSTANG TRAIL SUITE 8 VIRGINIA BEACH, VIRGINIA (804) 431-1041 (804) 465-1412 FAX.



- MONUMENT LEGEND**
- DENOTES MONUMENT SET PER JAMES CITY COUNTY SUBDIVISION ORDINANCE SECTION 19-34 TO 19-36
  - DENOTES OLD PIN FOUND (UNLESS NOTED OTHERWISE)

**NOTES:**

1. PROPERTY MERIDIAN AND COORDINATES SHOWN ON THIS PLAT ARE TIED TO JAMES CITY COUNTY MONUMENTATION, REFERENCE STATION 322 AND 321 RM3 AZ.
2. COORDINATES SHOWN ON THIS SHEET ARE PER M.B. 74, PG. 5, IN THE CLERK'S OFFICE OF THE CIRCUIT COURT OF JAMES CITY COUNTY, VIRGINIA.



SEE SHEET 1 OF 6 FOR NOTES AND CERTIFICATIONS

City of Williamsburg & County of James City Circuit Court: This PLAT was recorded on December 21, 2001. AMEND BY 84 PG 37-42. DOCUMENT # 010024015. BETSY B. WOOLRIDGE, CLERK.

**SHEET 2 OF 6**  
**SUBDIVISION**  
OF  
**MONTICELLO AT POWHATAN APARTMENTS**  
**PARCEL A**  
**AREA DESIGNATION D**  
**21.7638 ACRES TOTAL**  
AS SHOWN ON  
SUBDIVISION PLAT  
APARTMENT PARCEL NORTH SIDE OF NEWS ROAD  
POWHATAN OF WILLIAMSBURG SECONDARY  
BERKELEY DISTRICT - JAMES CITY COUNTY, VA.  
PLAT RECORDED IN M.B. 74, PG. 5, IN THE CLERK'S OFFICE OF  
THE CIRCUIT COURT, OF JAMES CITY COUNTY, VIRGINIA  
SCALE 1"=100' DATE: DECEMBER 13, 2001