

EXIST. 20' JAMES CITY COUNTY SERVICE AUTHORITY SAN. SEWER EASEMENT AS SHOWN IN AS-BUILT LOCATION. D.B. 141 - PG. 388



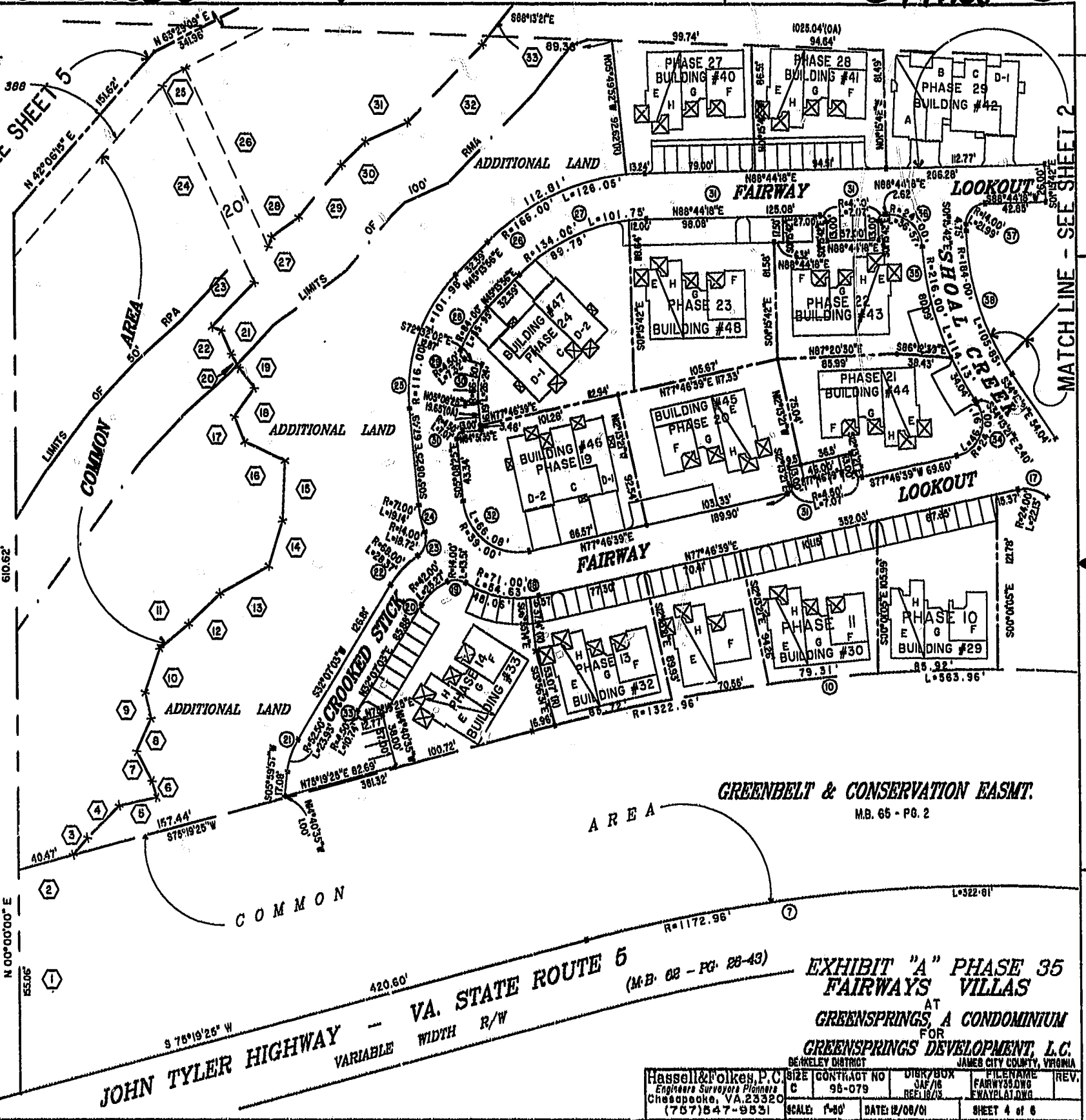
MATCH LINE - SEE SHEET 5

MATCH LINE - SEE SHEET 2

46-1-01-0-0001
"GREENSPRINGS PLANTATION"
(DB 322, PG 234)

City of Williamsburg & County of James City
Circuit Court: This PLAT was recorded on
14 Dec 2001
at 3:10 PM, PG. 28-35
DOCUMENT # 010023350
BETSY B. WOOLRIDGE, CLERK

Betsy Woolridge Dep. Clerk



GREENBELT & CONSERVATION EASMT.
M.B. 65 - PG. 2

JOHN TYLER HIGHWAY - VA. STATE ROUTE 6
VARIABLE WIDTH R/W
420.60'
S 76°19'25" W
R=1172.96'

EXHIBIT "A" PHASE 35
FAIRWAYS VILLAS
AT
GREENSPRINGS, A CONDOMINIUM
FOR
GREENSPRINGS DEVELOPMENT, L.C.

Hassell & Polken, P.C. Engineers Surveyors Planners Chesapeake, VA 23320 (757) 547-9531	SIZE C	CONTRACT NO 98-079	DIBR/BOX JAF/16 REF 18/13	FILENAME FAIRWAY35.DWG EWAYPLAT.DWG	REV.
SCALE: 1"=80'			DATE: 12/08/01	SHEET 4 of 6	