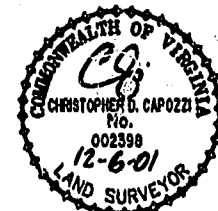


46-1-01-0-0001  
"GREENSPRINGS PLANTATION"  
(DB-322, PG 254)



City of Williamsburg & County of James City  
Circuit Court: This PLAT was recorded on  
14 Dec 2001  
at 3:02 PM, PB 89 PG 30-35  
DOCUMENT # 010023350  
BETSY B. WOOLRIDGE, CLERK  
*Betsy Woolridge*, Dep. Clerk

EXIST. 20' JAMES CITY COUNTY SERVICE  
AUTHORITY SAN. SEWER EASEMENT AS  
SHOWN IN AS-BUILT LOCATION, D.B. #1 - PG. 398

EXIST. 20' DRAINAGE EASEMENT  
M.B. 65 - PG. 2

MATCH LINE - SEE SHEET 5

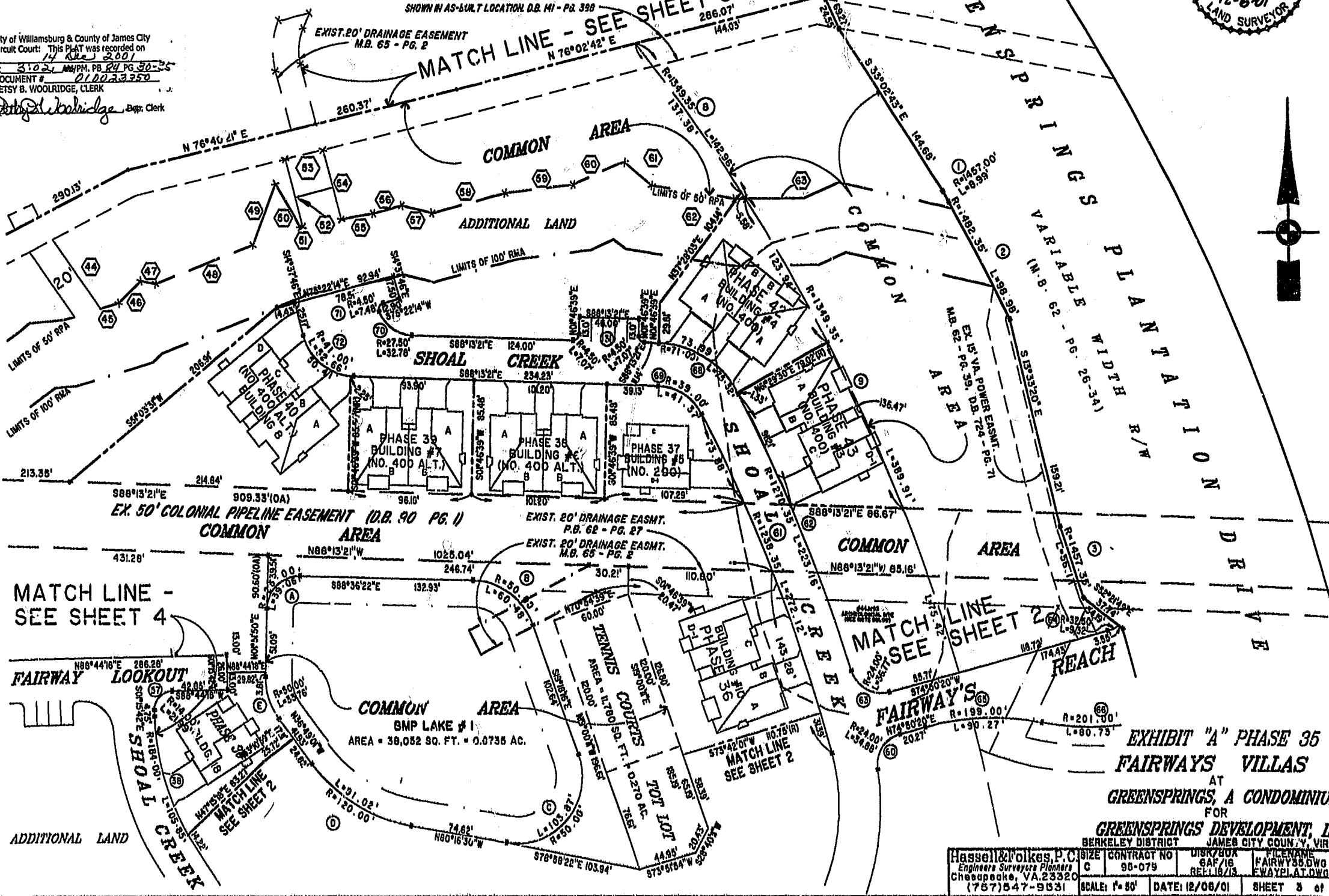


EXHIBIT "A" PHASE 35  
FAIRWAYS VILLAS  
AT  
GREENSPRINGS, A CONDOMINIUM  
FOR

GREENSPRINGS DEVELOPMENT, L.C.  
BERKELEY DISTRICT JAMES CITY COUNTY, VIRGINIA

Hassell & Folkes, P.C. Engineers Surveyors Planners Chesapeake, VA 23320 (757)547-9931	CONTRACT NO 95-079	DISK/BOK BAF/16 REL: 10/19	FILENAME FAIRWY35.DWG FWAYPLAT.DWG	REV.
SCALE: 1" = 80'	DATE: 12/06/01	SHEET 3 of 6		