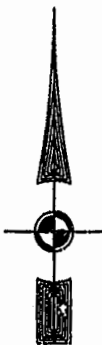


#010022646

84 PAGE 26

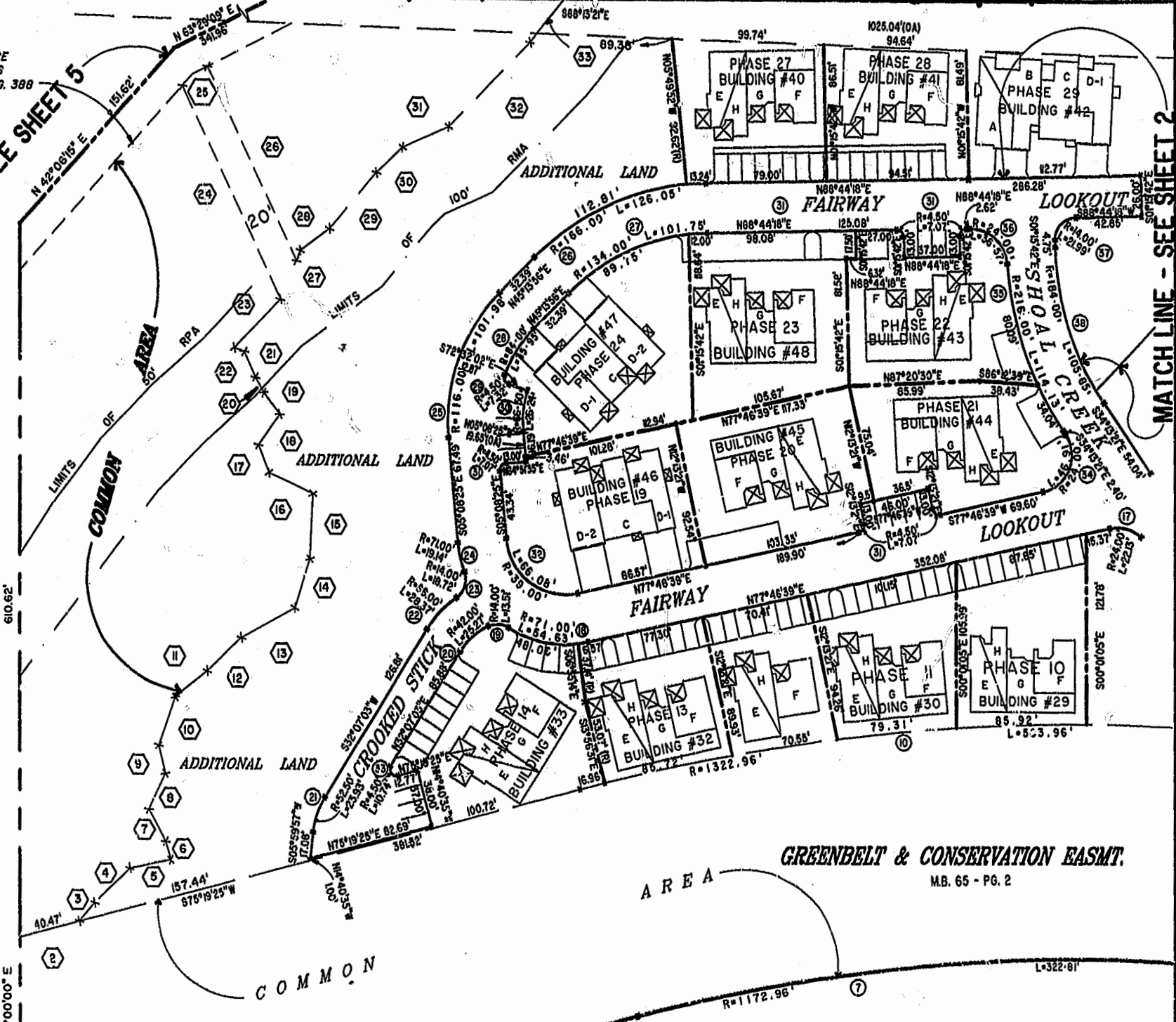
EXIST. 20' JAMES CITY COUNTY SERVICE AUTHORITY SAN. SEWER EASEMENT AS SHOWN IN AS-BUILT LOCATION. D.B. 141 - PG. 388



MATCH LINE - SEE SHEET 5

MATCH LINE - SEE SHEET 2

46-1-01-0-0001  
"GREENSPRINGS PLANTATION"  
(DB 322, PG 254)



JOHN TYLER HIGHWAY - VA. STATE ROUTE 65  
VARIABLE WIDTH R/W  
6 75°19'25" W 420.60'  
(M.B. 62 - PG. 28-43)

GREENBELT & CONSERVATION EASMT.  
M.B. 65 - PG. 2

EXHIBIT "A" PHASE 34  
FAIRWAYS VILLAS  
AT  
GREENSPRINGS, A CONDOMINIUM  
FOR  
GREENSPRINGS DEVELOPMENT, L.C.  
BERKELEY DISTRICT - JAMES CITY COUNTY, VIRGINIA

City of Williamsburg & County of James City Circuit Court: This PLAT was recorded on December 1, 2001 at 2:05 AM/PM, PG. 23-28 DOCUMENT # 010022646 Betsy B. Woolridge, Clerk

Hassell & Folkes, P.C. Engineers Surveyors Planners Chesapeake, VA 23320 (757) 547-9331	SCALE: 1"=50'	DATE: 11/21/01	SHEET 4 of 6
--	---------------	----------------	--------------