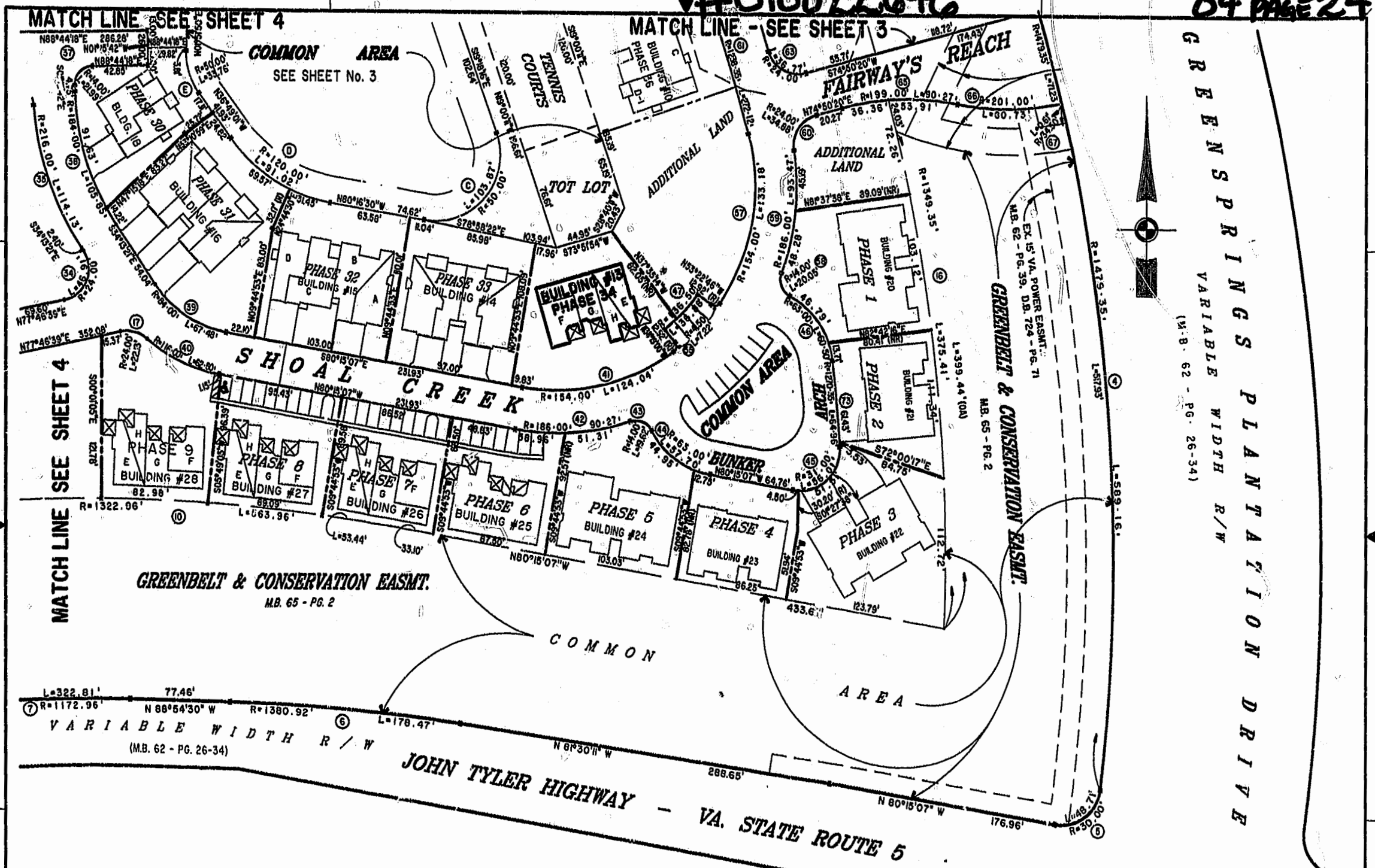


#010022646

84 PAGE 24



GREENBELT & CONSERVATION EASMT.  
 VARIABLE WIDTH R/W  
 (M.B. 62 - PG. 26-34)

GREENBELT & CONSERVATION EASMT.  
 (M.B. 65 - PG. 2)

MATCH LINE SEE SHEET 4

MATCH LINE SEE SHEET 4

MATCH LINE - SEE SHEET 3

**EXHIBIT "A" PHASE 34**  
**FAIRWAYS VILLAS**  
 AT  
**GREENSPRINGS, A CONDOMINIUM**  
 FOR  
**GREENSPRINGS DEVELOPMENT, L.C.**

City of Williamsburg & County of James City  
 Circuit Court: This PLAT was recorded on  
 December 1, 2001  
 at 2:05 P.M. AM/PH, PG. 24, PG. 23, 22  
 DOCUMENT # 010022646  
 BETSY B. WOOLRIDGE, CLERK  
 Betsy Woolridge, Dep. Clerk



Hassell & Folkes, P.C. Engineers Surveyors Planners Chesapeake, VA 23320 (757) 547-9631		CONTRACT NO. 95-079	DISK/BOX 6AE/16 REF: 18/13	FILENAME FAIRWY34.DWG FWAYPLAT.DWG	REV. 
SCALE: 1" = 80'		DATE: 11/21/01	SHEET 2 of 6		