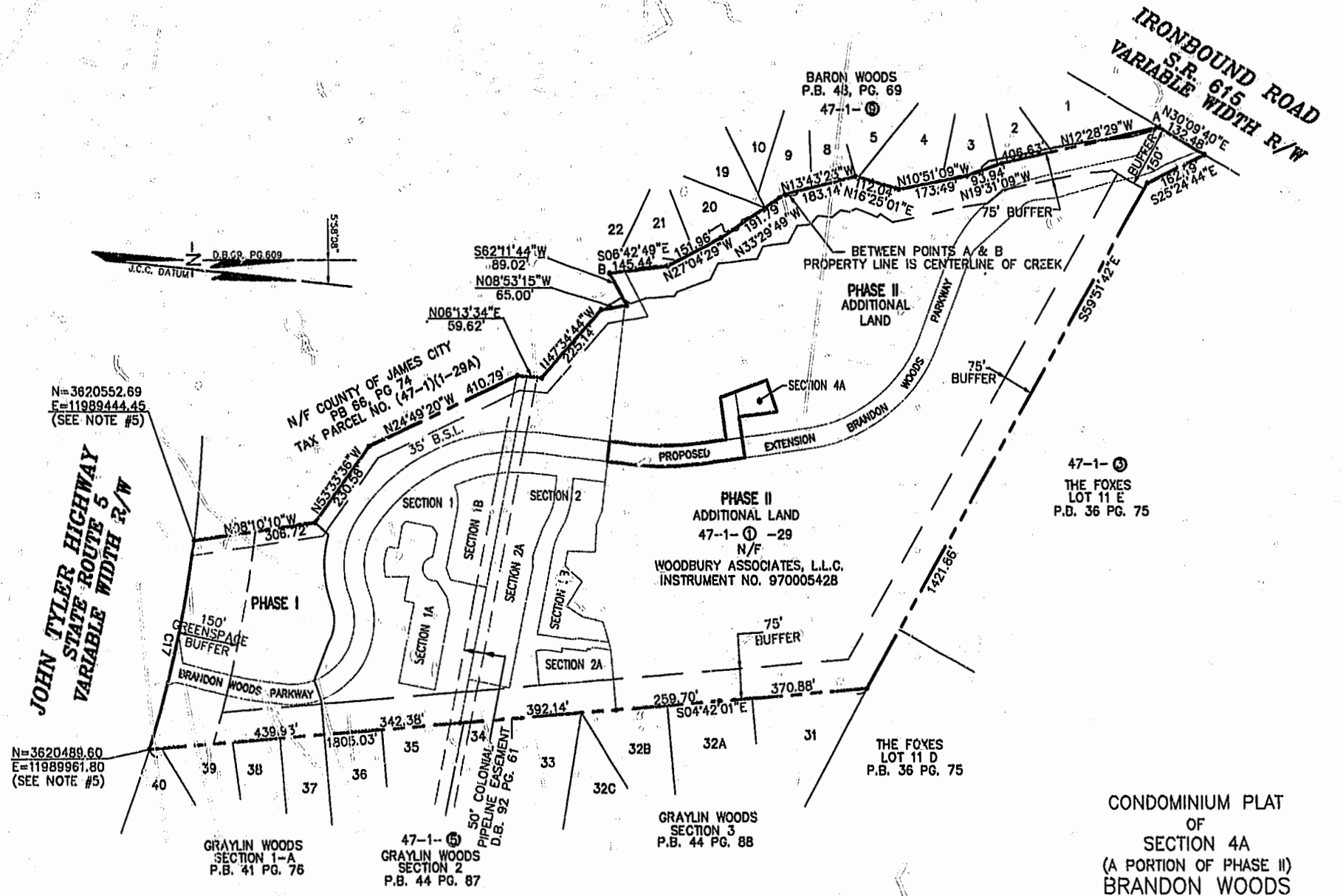
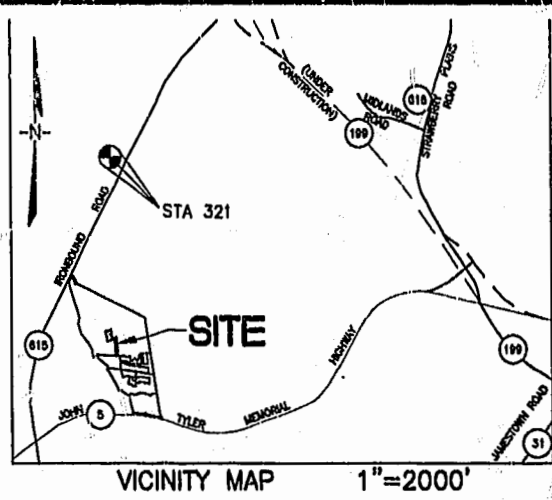


#010022614

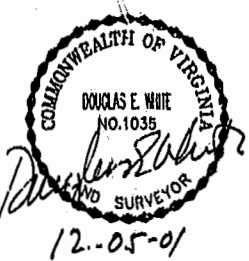
84 PAGE 20

CURVE TABLE						
CURVE	LENGTH	RADIUS	TANGENT	CHORD BEARING	CHORD	DELTA
C17	521.88'	2904.79'	261.65'	N77°04'44"W	521.18'	10°17'38"

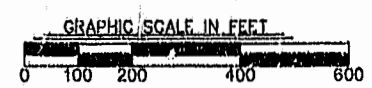


N=3620552.69  
E=11989444.45  
(SEE NOTE #5)

N=3620489.60  
E=11989961.80  
(SEE NOTE #5)



City of Williamsburg & County of James City  
Circuit Court: This PLAT was recorded on  
at 9:15 AM on 12/5/01  
DOCUMENT # 010022614  
BETSY B. WOOLRIDGE, CLERK



CONDOMINIUM PLAT  
OF  
SECTION 4A  
(A PORTION OF PHASE II)  
BRANDON WOODS  
JAMES CITY COUNTY, VIRGINIA  
SCALE: 1"=200' DATE: 12/5/01  
SHEET 1 OF 3

**LANDMARK DESIGN GROUP**  
Engineers • Planners • Surveyors  
Landscape Architects • Environmental Consultants  
4029 IRONBOUND ROAD, SUITE 100  
WILLIAMSBURG, VA 23188  
TEL (757) 253-2975 FAX(757) 229-0049