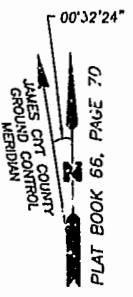


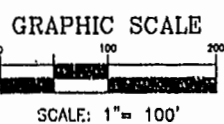
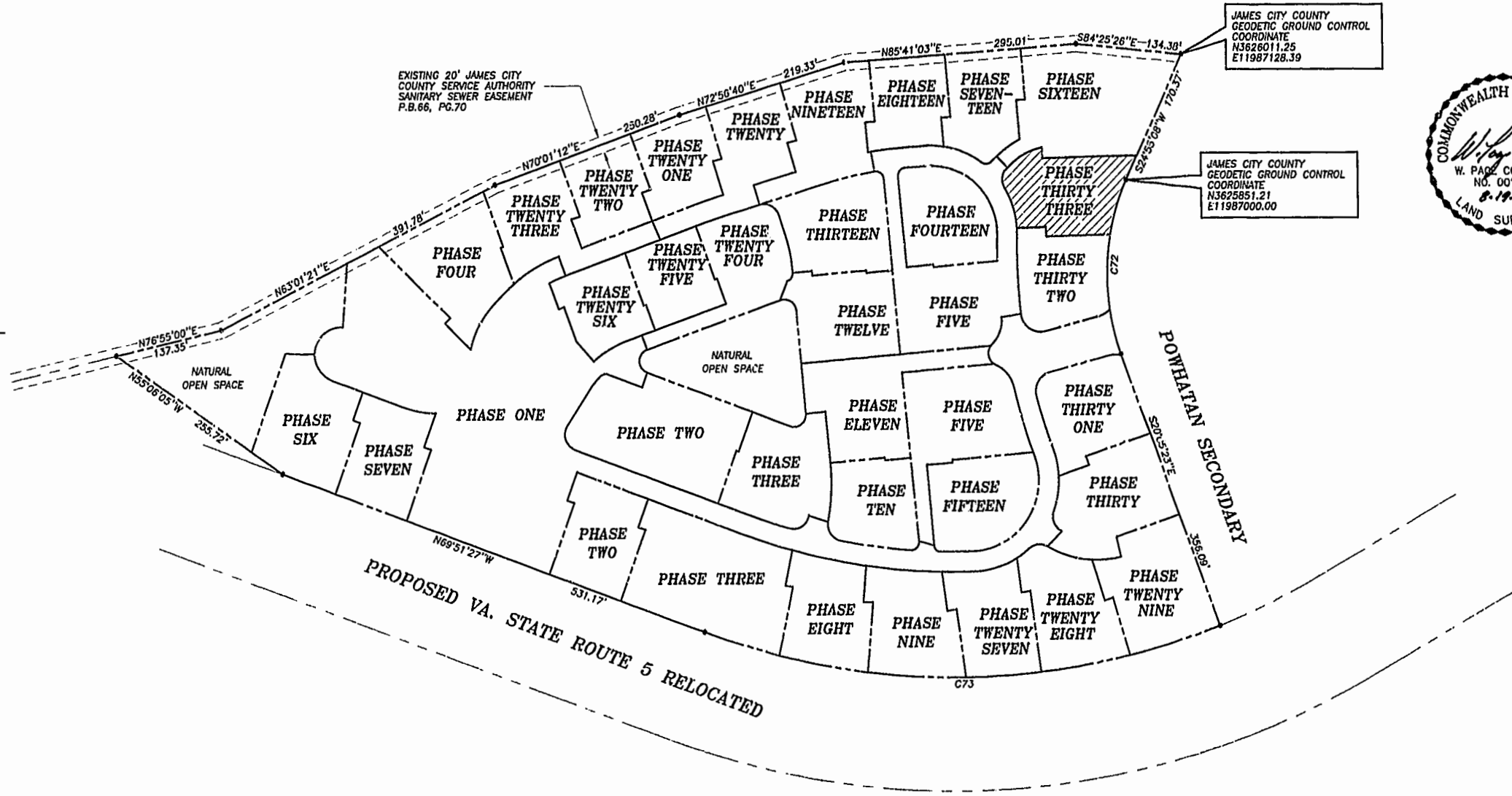
PLAT OF SUBDIVISION  
WATERFORD  
AT  
POWHATAN SECONDARY  
PHASE THIRTY-THREE  
BERKELEY DISTRICT  
JAMES CITY COUNTY, VIRGINIA

DATE: 10/21/98 SHEET 2 OF 3 SCALE: 1"=100'  
PROJECT NO: 97-008 DRAWN BY: SJB

**SA** SLEDD & ASSOCIATES, P.C.  
ENGINEERS PLANNERS SURVEYORS  
11832 ROCK LANDING DRIVE, SUITE 203  
NEWPORT NEWS, VIRGINIA 23606  
(757) 873-3386



NOW OR FORMERLY  
POWHATAN ENTERPRISES, INC.



CURVE DATA

NUMBER	DELTA	RADIUS	LENGTH	TANGENT	CHORD	CHORD BEARING
C72	45°00'31"	280.00'	219.95'	116.00'	214.34'	S02°24'52"W
C73	41°26'14"	924.91'	668.91'	349.84'	654.43'	S89°25'26"W

City of Williamsburg & County of James City  
Circuit Court, This PLAT was recorded on  
November 15, 1998  
at 1:55 AM/PM, PG. 83 of 91  
DOCUMENT # 010020997  
BETSY B. WOOLRIDGE, CLERK

*Betsy Woolridge* Dep. Clerk

REVISED: 08/19/99  
WATERFORD PH.33 97-008

X:\PROJECTS\1998\05\20\GL\PLATS\PHASE33.DWG Fri Aug 20 13:53:10 1999