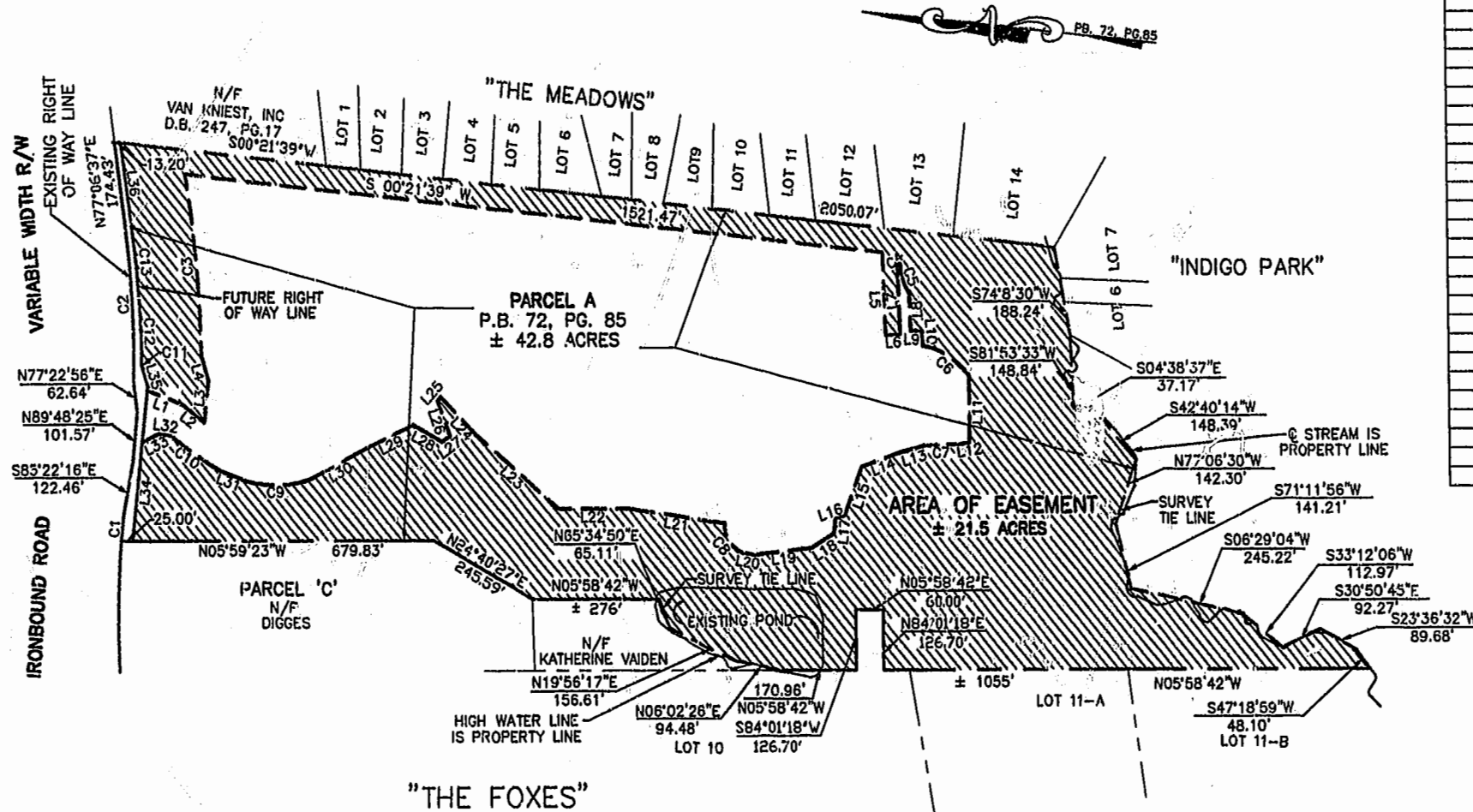
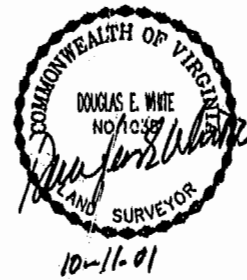


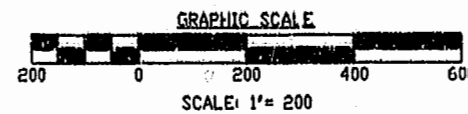
LINE TABLE		
LINE	LENGTH	BEARING
L1	79.18'	S15°08'14"W
L2	63.08'	S32°20'21"W
L3	88.59'	S89°37'23"E
L4	52.46'	N67°53'46"E
L5	173.93'	S82°25'55"W
L6	31.81'	S07°34'05"E
L7	141.99'	N82°25'55"E
L8	78.67'	S82°25'55"W
L9	22.50'	S05°59'24"E
L10	31.75'	S79°00'14"W
L11	139.99'	S84°13'47"W
L12	17.85'	N14°20'57"W
L13	59.83'	N21°47'15"W
L14	85.32'	N25°37'46"W
L15	108.08'	N75°43'07"W
L16	22.44'	N24°24'50"W
L17	31.66'	N09°54'39"W
L18	57.00'	N37°56'53"W
L19	122.95'	N12°35'52"W
L20	30.57'	N02°54'40"E
L21	209.57'	N02°34'53"E
L22	153.94'	N05°58'42"W
L23	234.11'	N35°41'10"E
L24	111.20'	N40°12'03"E
L25	8.79'	N52°44'13"W
L26	79.63'	S65°28'58"W
L27	20.18'	N41°13'54"W
L28	71.97'	N23°25'53"E
L29	114.46'	N31°40'00"W
L30	137.36'	N33°34'33"W
L31	61.49'	N15°36'05"E
L32	25.23'	N02°48'02"E
L33	40.23'	N31°55'42"W
L34	327.19'	S89°37'23"E
L35	44.05'	N67°53'46"E
L36	180.22'	N76°57'17"E



CURVE TABLE						
CURVE	LENGTH	RADIUS	TANGENT	CHORD BEARING	CHORD	DELTA
C1	48.69'	2143.09'	24.35'	N89°31'34"E	48.69'	1°18'06"
C2	333.85'	2209.44'	167.24'	N81°26'20"E	333.53'	8°39'27"
C3	386.00'	2799.61'	193.30'	N79°13'33"E	385.69'	7°53'59"
C4	10.99'	5.70'	8.21'	S56°05'20"E	9.37'	110°24'34"
C5	65.29'	107.61'	34.23'	S67°39'23"W	65.25'	35°17'42"
C6	121.96'	151.48'	64.50'	N27°09'12"E	118.69'	46°07'45"
C7	81.33'	1142.48'	40.68'	N08°15'39"W	81.32'	4°04'44"
C8	76.94'	57.72'	45.40'	N53°37'22"E	71.37'	76°22'21"
C9	139.75'	237.71'	71.96'	N07°24'34"W	137.74'	33°41'03"
C10	130.88'	665.04'	65.65'	N28°32'44"E	130.67'	11°16'34"
C11	6.19'	33.63'	3.11'	N79°47'37"E	6.19'	10°33'07"
C12	117.46'	1329.79'	58.77'	N82°32'21"E	117.42'	5°03'39"
C13	167.85'	3297.43'	83.95'	N78°33'02"E	167.84'	2°55'00"



City of Williamsburg & County of James City
 Circuit Court, This PLAT was recorded on
 25 OCT 2001
 at 9:07 AM, PB 83 PG 74
 DOCUMENT # 010019411
 BETSY B. WOOLRIDGE, CLERK



EASEMENT PLAT
 SHOWING
 CONSERVATION EASEMENT
 FOR
 NATURAL OPEN SPACE
 ON THE PROPERTY OF
 CATHOLIC DIOCESE OF RICHMOND
 JAMES CITY COUNTY, VIRGINIA

DATE: 07/18/01 SCALE: 1" = 200'



4029 Ironbound Road
 Suite 100
 Williamsburg, VA 23188
 Tel. (757) 353-2975
 Fax (757) 229-0049
 Email: lmdg@landmarkdgb.com

5344 Greenwich Road
 Suite 200
 Virginia Beach, VA 23462
 Tel. (757) 473-2000
 Fax (757) 497-7933
 Email: lmdg@landmarkdgb.com